

# Statewide Local Streets & Roads Needs Assessment

California Transportation Commission  
April 15, 2009



RTPA  
RCTF

CALIFORNIA STATEWIDE NEEDS ASSESSMENT PROJECT  
[WWW.SAVECALIFORNIASTREETS.ORG](http://WWW.SAVECALIFORNIASTREETS.ORG)



## Study Objectives

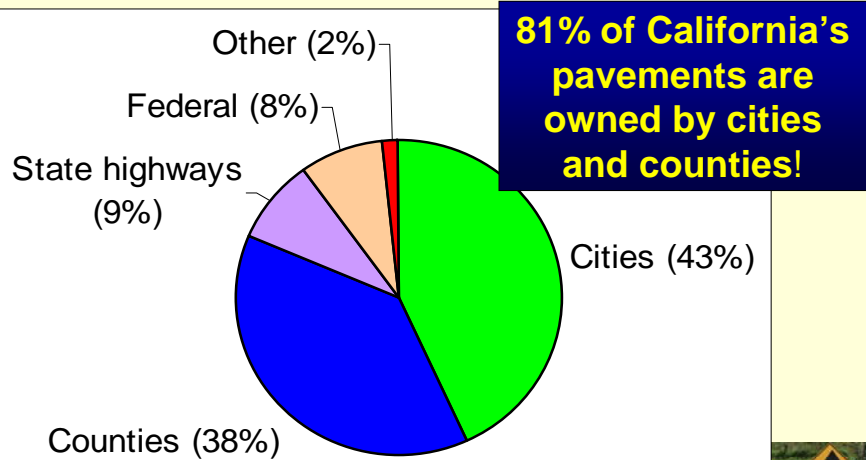
- What are conditions of local streets & roads?
- How much will it cost to improve/maintain pavements in an acceptable condition?
- What are safety, traffic & regulatory needs?
- Is there a \$\$ shortfall? If so, what is it?



CALIFORNIA STATEWIDE NEEDS ASSESSMENT PROJECT  
[WWW.SAVECALIFORNIASTREETS.ORG](http://WWW.SAVECALIFORNIASTREETS.ORG)



## Local Streets & Roads are Huge Part of State Network



**81% of California's pavements are owned by cities and counties!**

CALIFORNIA STATEWIDE NEEDS ASSESSMENT PROJECT  
WWW.SAVECALIFORNIASTREETS.ORG



## It's Not Just Pavements ...



- Sidewalks
- ADA ramps
- Curb & gutter
- Storm drains
- Others



CALIFORNIA STATEWIDE NEEDS ASSESSMENT PROJECT  
WWW.SAVECALIFORNIASTREETS.ORG



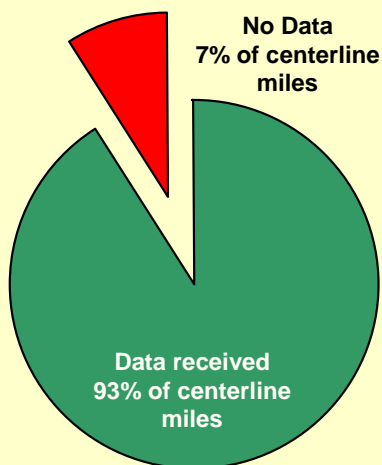
## Study Assumptions

- 10 year analysis period
- Constant 2008 \$
- Pavement goal is best mgmt practices
- Inclusion of safety, traffic & regulatory elements
- Does not include new streets, capital improvements, bridges

CALIFORNIA STATEWIDE NEEDS ASSESSMENT PROJECT  
WWW.SAVECALIFORNIASTREETS.ORG



## Data Collection

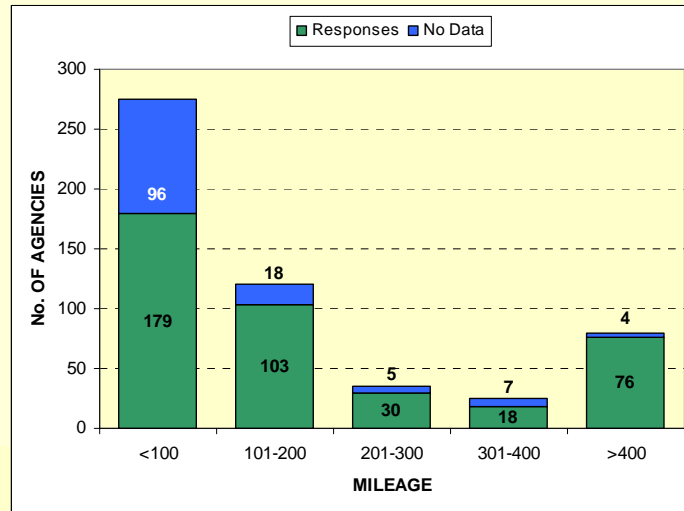


- Total of 406 agencies
  - 56 counties
  - 350 cities
- Missing 130 agencies
  - Mostly small cities
  - No data
  - No resources

CALIFORNIA STATEWIDE NEEDS ASSESSMENT PROJECT  
WWW.SAVECALIFORNIASTREETS.ORG



## Are Data Representative?

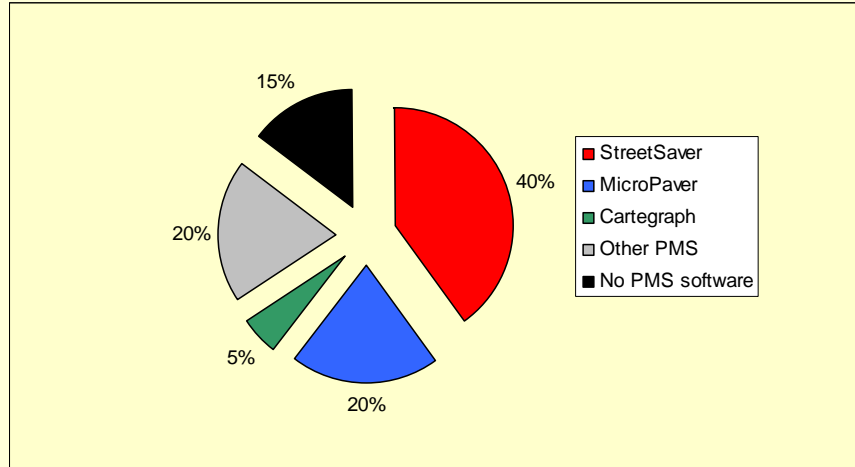


## Quality Assurance

- Validation checks
  - Lengths – compared with HPMS
  - Areas – simple checks
  - Math errors
  - Mismatched units
  - Tests of reasonableness
- Made follow-up calls/emails – only medium/large agencies



## How Good Are Pavement Data?



CALIFORNIA STATEWIDE NEEDS ASSESSMENT PROJECT  
WWW.SAVECALIFORNIASTREETS.ORG



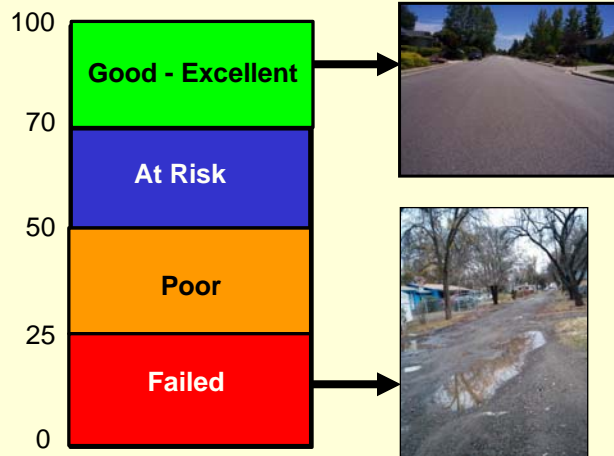
## Quality of Safety, Traffic & Regulatory / \$\$ Data

- Safety, traffic & regulatory
  - 188 partial, 58 complete
- Funding/expenditures
  - 29 counties & 108 cities responded

CALIFORNIA STATEWIDE NEEDS ASSESSMENT PROJECT  
WWW.SAVECALIFORNIASTREETS.ORG



# Pavement Condition Index



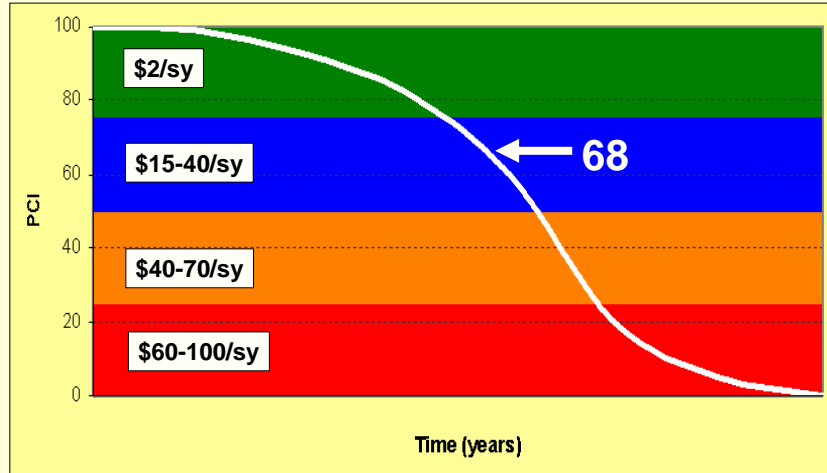
CALIFORNIA STATEWIDE NEEDS ASSESSMENT PROJECT  
WWW.SAVECALIFORNIASTREETS.ORG



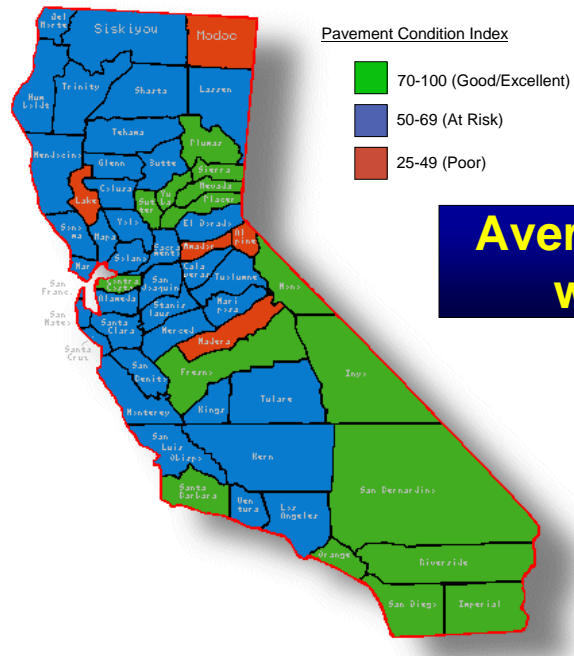
# Statewide Average PCI = 68



# Why is 68 Critical?



CALIFORNIA STATEWIDE NEEDS ASSESSMENT PROJECT  
[WWW.SAVECALIFORNIASTREETS.ORG](http://WWW.SAVECALIFORNIASTREETS.ORG)



**Average County-wide PCIs**

**All green counties have a PCI < 80**

## Needs Calculations

1. Pavement condition goal = reach best management practices in 10 years
2. M&R decision tree
3. Performance (prediction) models
4. Escalation factors
5. Calculate “biggest bang for the buck” i.e. optimization

CALIFORNIA STATEWIDE NEEDS ASSESSMENT PROJECT  
 WWW.SAVECALIFORNIASTREETS.ORG

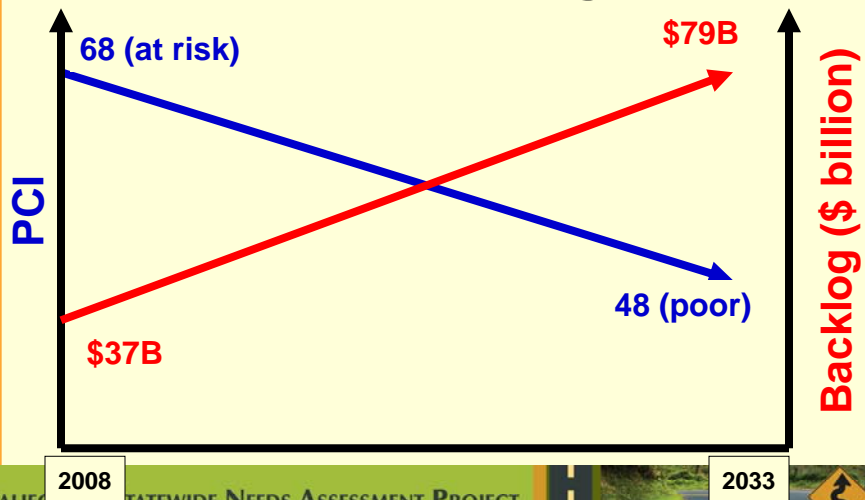


## Funding Sources

Funding Sources	Annual Funding		
	FY 2006/07 & 07/08	FY 08/09	FY 09/10 onward
State	41.0%	40.5%	52.9%
State - Prop 1B	10.0%	0%	0%
Federal with ARRA*	10.8%	<b>35.9%</b>	10.4%
Local	38.1%	23.6%	36.8%

\* ARRA local share is assumed to be 40% of \$1.6 billion.

## What Happens If We Don't Get More Funding?



CALIFORNIA STATEWIDE NEEDS ASSESSMENT PROJECT  
WWW.SAVECALIFORNIASTREETS.ORG

## What Happens If We Don't Get More Funding?



## Total 10 Year Shortfall (\$B)

Transportation Asset	10 Year Needs	Existing Funding	10 Year Shortfall
Pavements	\$ 67.6	\$ 15.9	\$ 51.7
Essential Components	\$ 32.1	\$ 12.4	\$ 19.7
<b>Total shortfall</b>			<b>\$71.4</b>

38 cents/gallon!

## Summary

- **Good News**
  - Data received represents 93% of local system
  - Statewide average PCI = 68
  - Gas is \$2.25/gallon today
- **Not so good news**
  - PCI = 68 is at risk category & drops to 48 by 2033 with existing funding
  - Need to more than double existing funding to maintain transportation assets



# Questions?

## Contact

**Margot Yapp, P.E.**  
**Vice President/Principal**  
**Nichols Consulting Engineers, Chtd.**  
[myapp@nce.reno.nv.us](mailto:myapp@nce.reno.nv.us)



RTPA  
RCTF

CALIFORNIA STATEWIDE NEEDS ASSESSMENT PROJECT  
[WWW.SAVECALIFORNIASTREETS.ORG](http://WWW.SAVECALIFORNIASTREETS.ORG)

