



California
**Department of
Conservation**

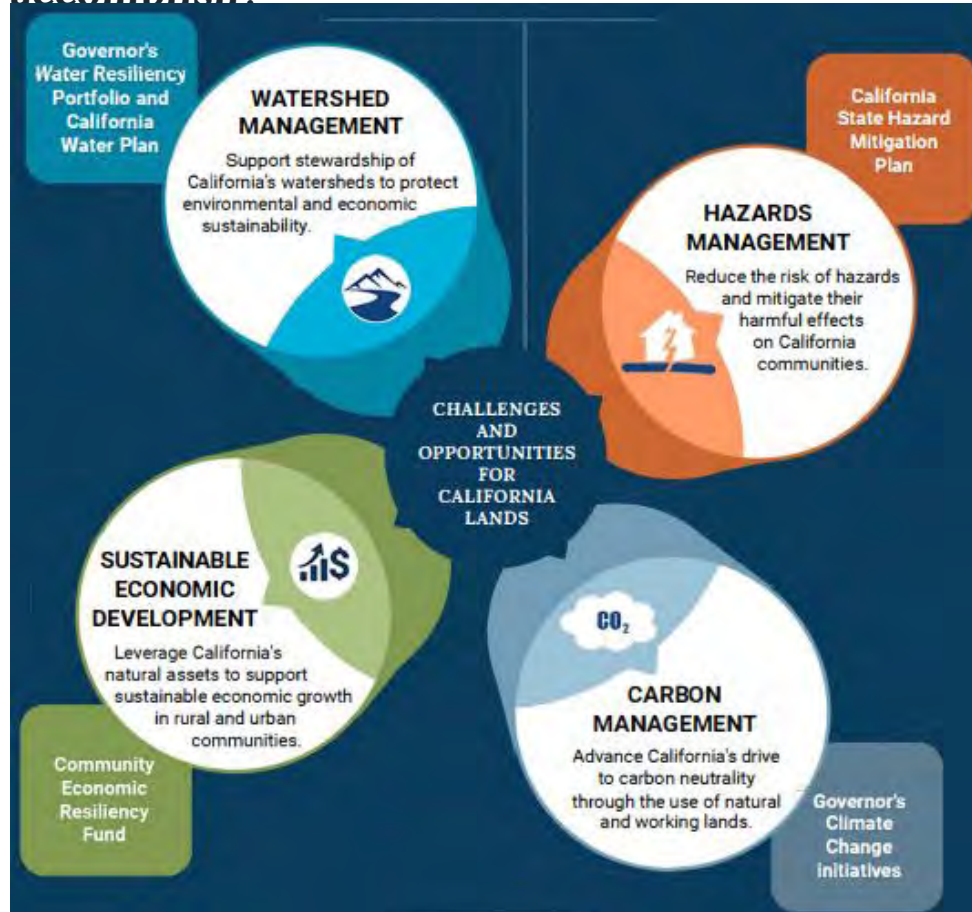
Where am I? And, what does that mean?

Nathaniel Roth
Chief Science & Data Advisor
(916) 531 0134
nathaniel.roth@conservation.ca.gov

It depends...On what you're trying to accomplish



And what is the Department of Conservation trying to accomplish?



This new **four-pillar framework** aligns DOC's work with the Governor's climate and natural resource goals.

These pillars illustrate how **DOC supports** partners inside and outside state government.

The pillars also provide a means for **identifying future work** within DOC and with partners.

FOREST MANAGEMENT
PLANNING

LANDSLIDE ASSESSMENT

RIPARIAN RESTORATION

LEGACY MINE
REMEDiation

OIL CONTAMINATION
PREVENTION

FARMLAND CONSERVATION
AND MANAGEMENT

GROUNDWATER RECHARGE

LAND REPURPOSING

WATER
RESILIENCE
PORTFOLIO

Watershed Management
DOC supports stewardship of California's watersheds to protect environmental and economic sustainability.

DOC's Watershed Management

Supporting state and local partners in improving the health of waterways and the land through which water flows from mountaintop to valley floor.

WILDFIRE RISK REDUCTION

ABANDONED MINE
REMEDIATION

LANDSLIDE ASSESSMENT

PUBLIC HEALTH
PROTECTION

EARTHQUAKE MONITORING
AND ALERT SYSTEM

DOC's Hazard Management

Help state and local leaders minimize risk to public health and the environment from natural and human-caused hazards.

TSUNAMI INUNDATION
MAPPING

OIL WELL PLUG AND
ABANDONMENTS

PREVENT OIL SURFACING AND OTHER
INCIDENTS RELATED TO OIL EXTRACTION

SEISMIC MAPPING

HAZARD MITIGATION PLAN

Hazard Management
DOC identifies hazards and minimizes
risk and harmful effects on
California communities.

DOC's Carbon Management

Helping local communities use the vestiges of our past, to fight climate change in the future.

WILDFIRE RISK
REDUCTION PLANNING

MINING LANDS
RECLAMATION

CONSERVING LAND TO
SUPPORT SUSTAINABLE
GROWTH AND CO2 STORAGE

GEO THERMAL ENERGY
PRODUCTION

OIL WELL
MONITORING
AND
EMISSION
REDUCTION

CLIMATE
CHANGE
INITIATIVES

Carbon Management

DOC enhances the capacity of natural and working lands to help California achieve carbon neutrality by 2045.

URBAN GARDEN AND
COMMUNITY SPACE

CONSTRUCTION MATERIALS

CARBON SEQUESTRATION
AND SAFE, CLEAN ENERGY

SUPPORTING AG LAND
CONSERVATION FOR
FOOD SUPPLY

REMEDIED MINE SITE

DRINKING WATER

CLIMATE AND COMMUNITY
RESPONSIBLE DEVELOPMENT

EQUITABLE ACCESS TO
OPEN SPACE

FARMERS MARKET

REGIONS
RISE TOGETHER
INITIATIVE

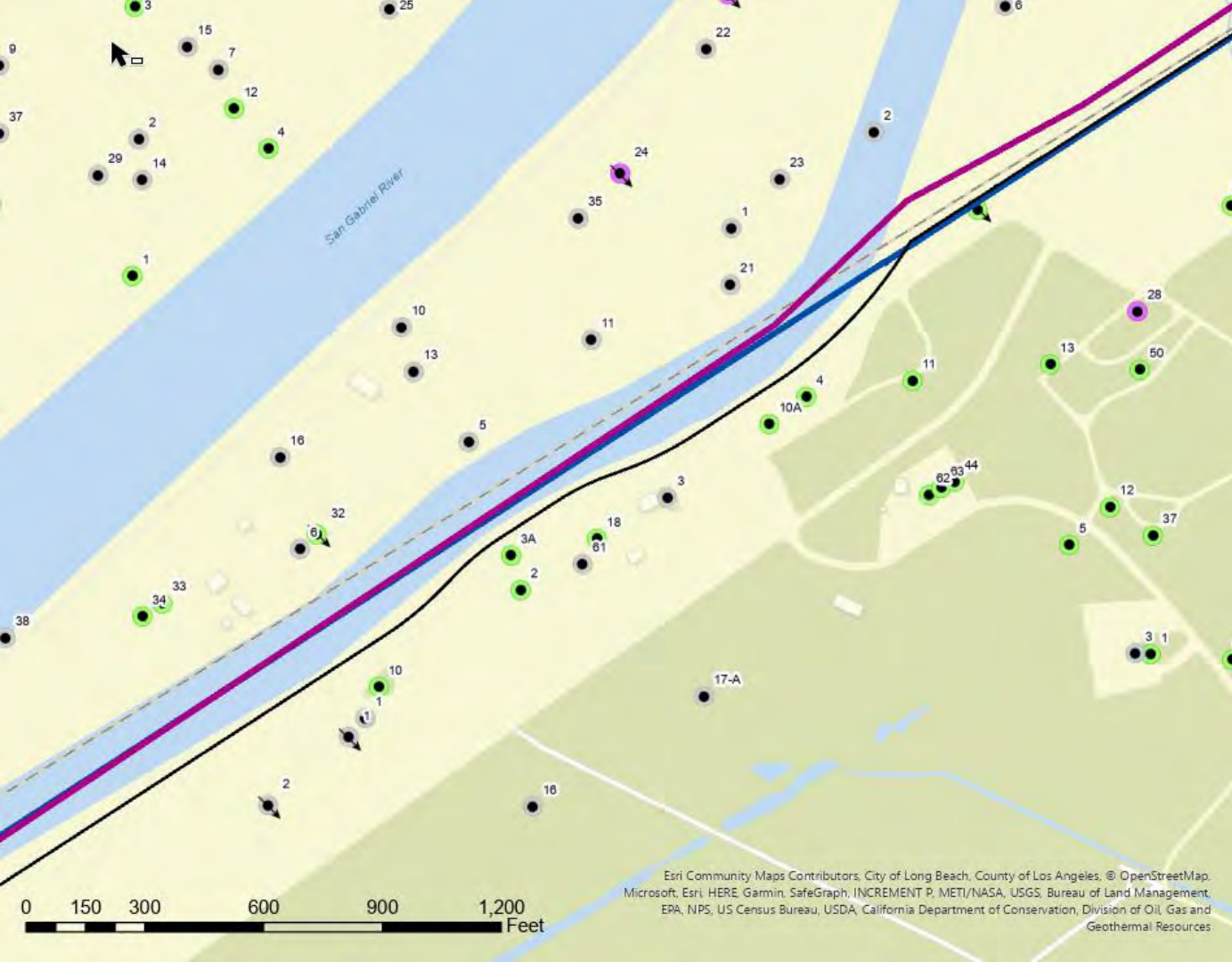
**Sustainable
Economic Development**
DOC leverages California natural
assets to support sustainable
economic growth in rural and
urban communities.

DOC's Sustainable Economic Development

Natural and working lands provide resources that underpin successful economies of both community and industry.

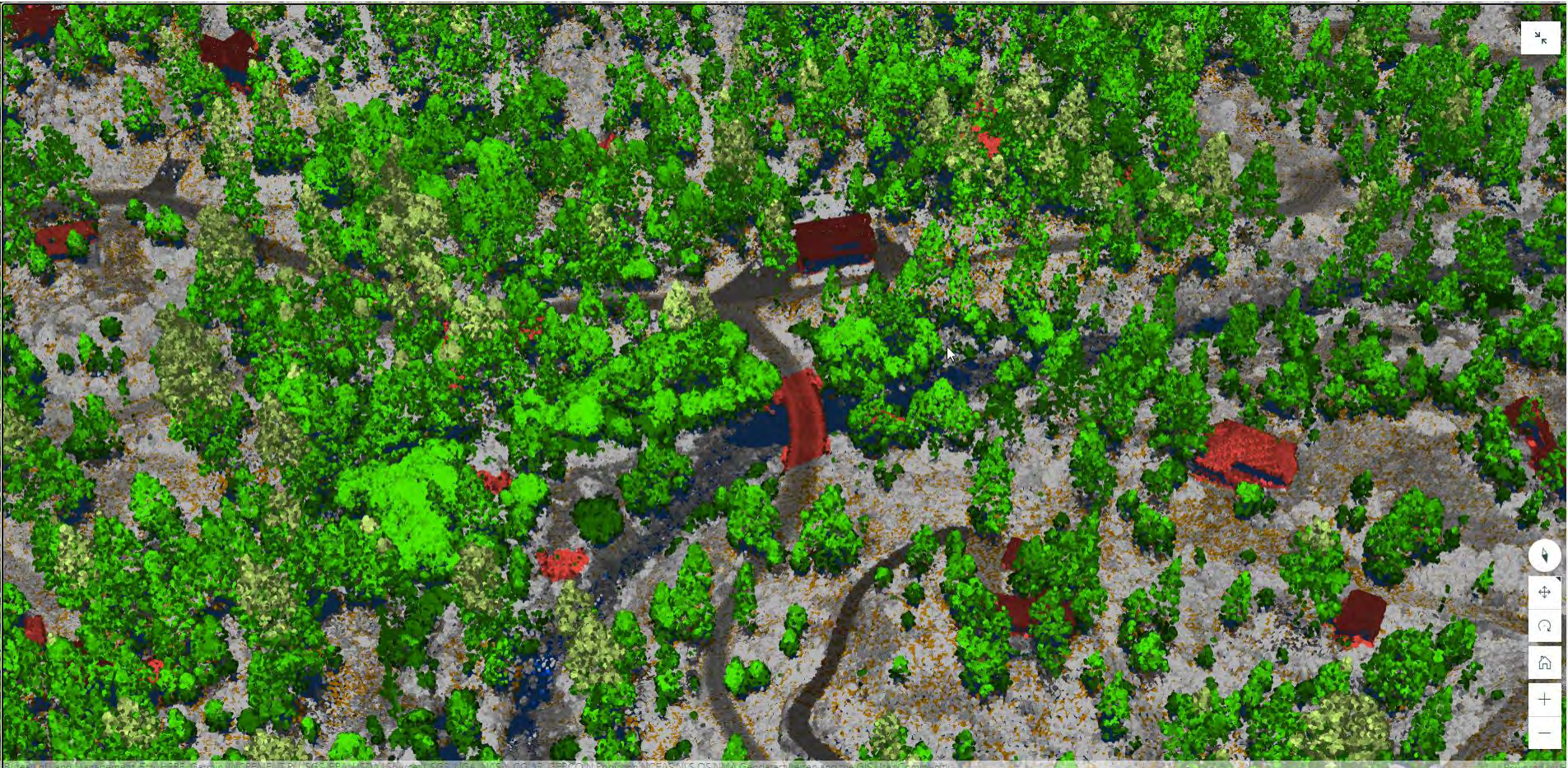
A Couple Cases

-



County Boundaries

LiDAR and Derived Products



And a Question for You...

Are you advising folks in the county who lack the expertise to understand the full significance of the upcoming 2022 datum and how to implement it in GIS?



THANK YOU

Questions?

Nathaniel Roth
nathaniel.roth@conservation.ca.gov