



Thomas Fire – Ventura County Office of Emergency Services and Public Works Agency Response

Ventura County Watershed Protection District

Glenn Shephard, P.E., Deputy Director, Public Works Agency

Wednesday, April 11, 2018

Ventura County Perspective

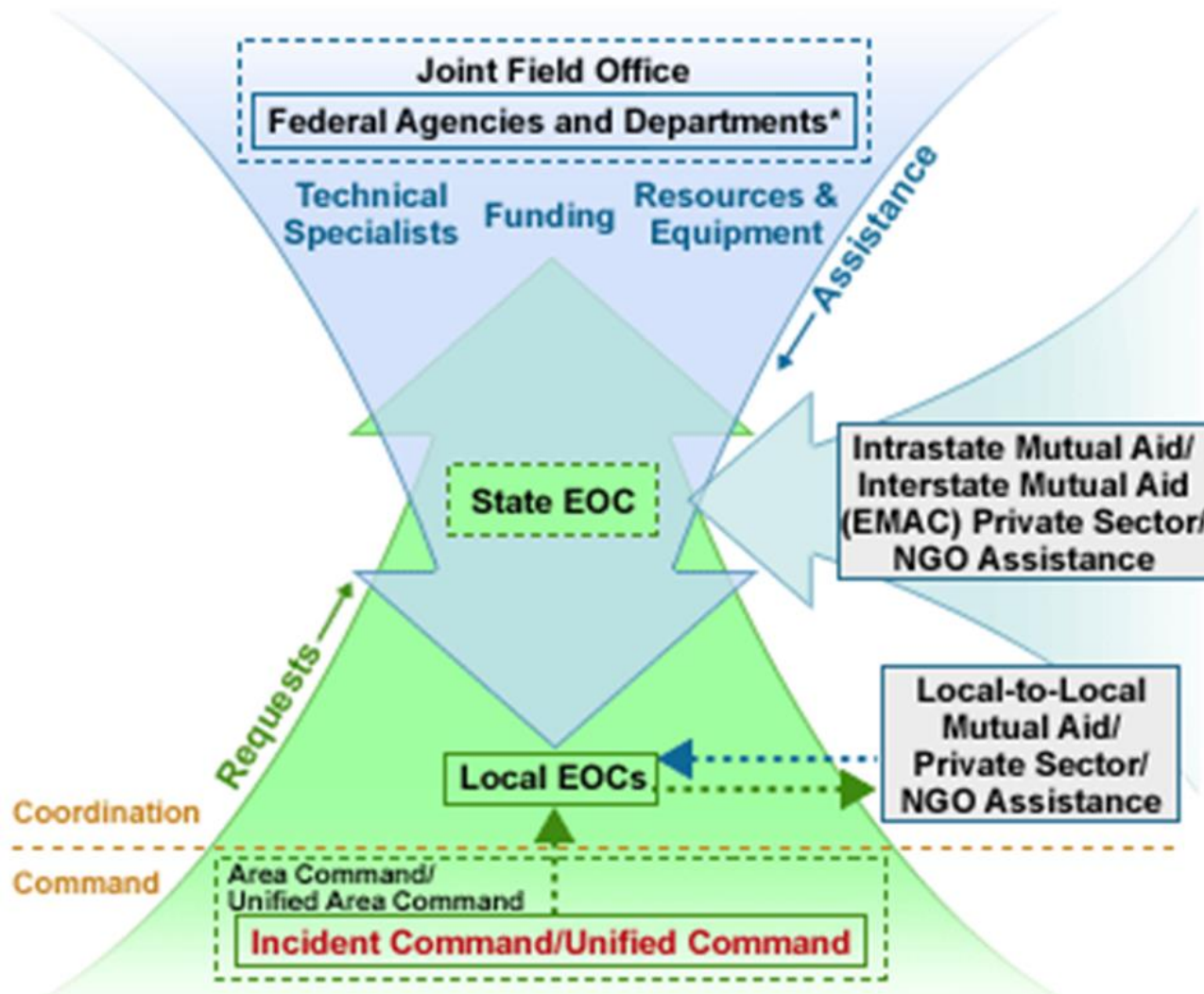
- ▶ Geography
- ▶ Fire Timing
- ▶ Sheriff's EOC
- ▶ Rain Impacts
- ▶ AARs



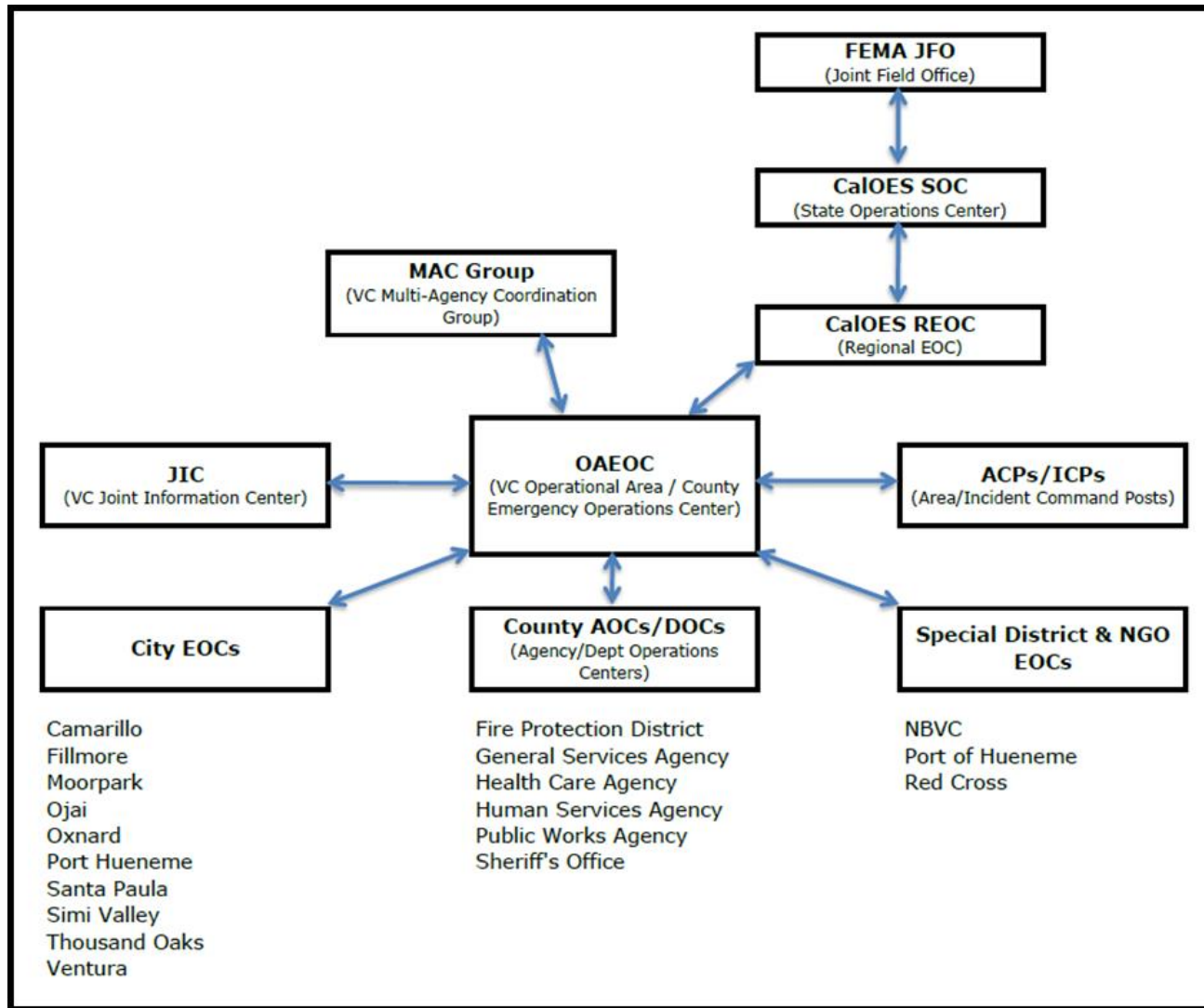
Incident Command System Challenges

- Too many responders reporting to a single supervisor
- Lack of accurate and reliable information on incidents
- Different structures for response throughout different federal organizations
- Incompatible communications across the platforms
- Blurred lines of authority leading to response delays and confusion
- Difficulty coordinating the planning among multiple agencies
- Differences in the terminology used in different agencies

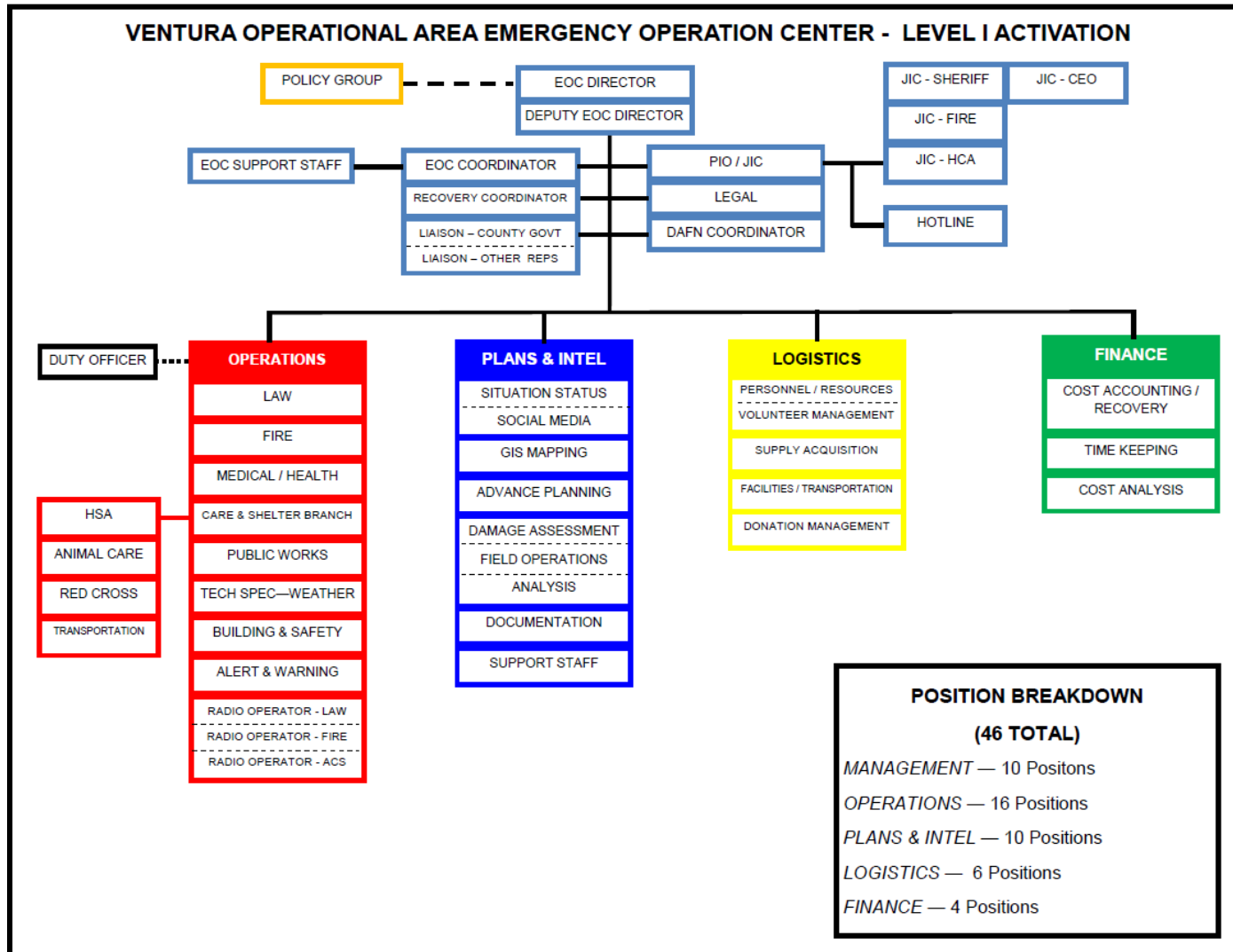
Ventura County Emergency Management



Ventura County Emergency Management



Ventura County Emergency Management



VCPWA - Sheriff's EOC Presence

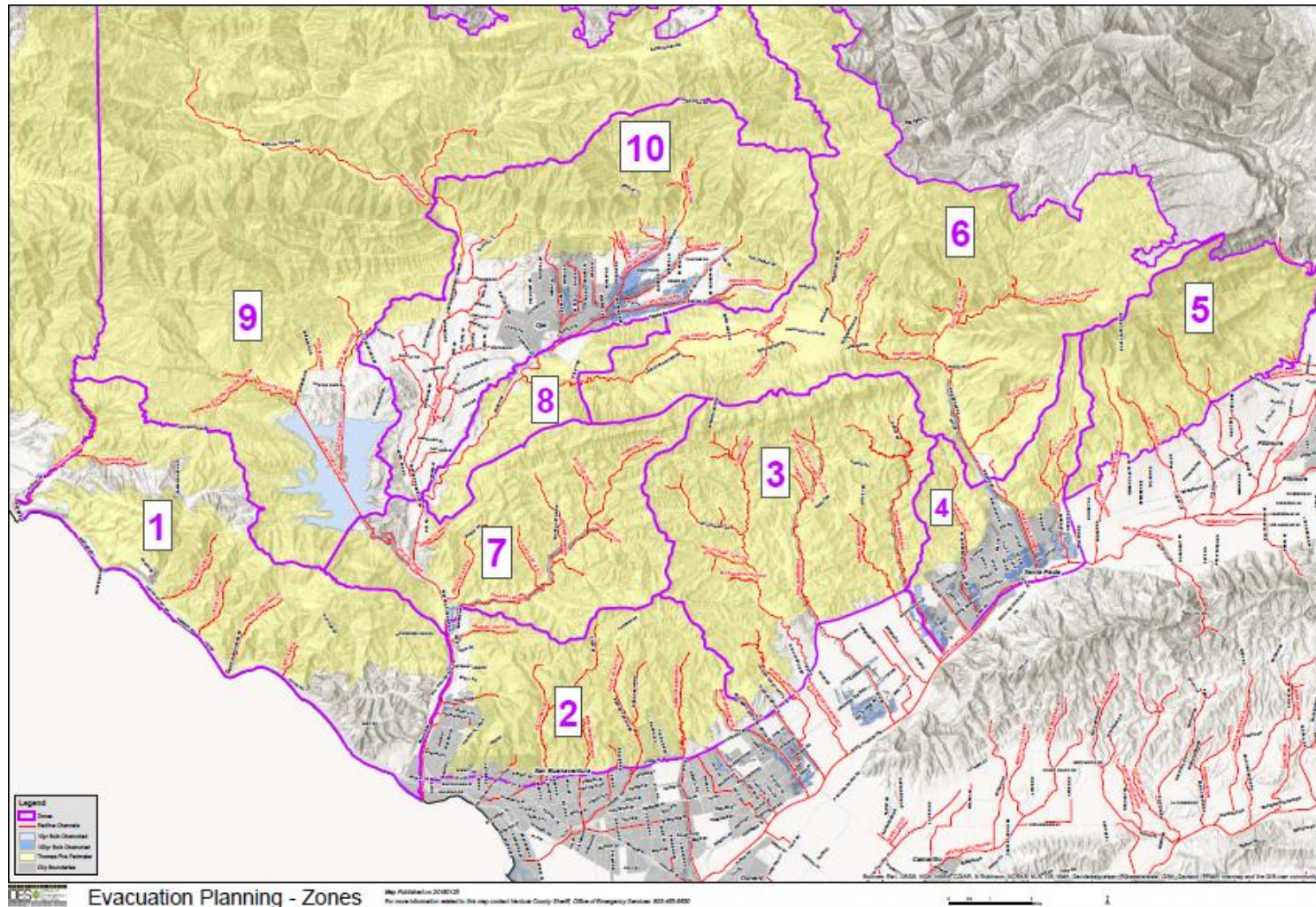
PWA EOC Embedded Team:

- Hydrologists
- Geologist
- PWA Duty Officer (Transportation/Flood Fighting)

Forecasting:

- National Weather Service
- Quantitative Precipitation Forecast (QPF) from Fox Weather, LLC (Private Meteorological Consultant)
- Hydrology Models run every 4 hours with forecasted and observed rainfall; updated QPF/Actuals/CFS web viewed

Evacuation/Planning Zones



VCWPD Preparations

Additional Debris Basin cleanouts

Improved channel cleanouts

Improved real-time displays on web site

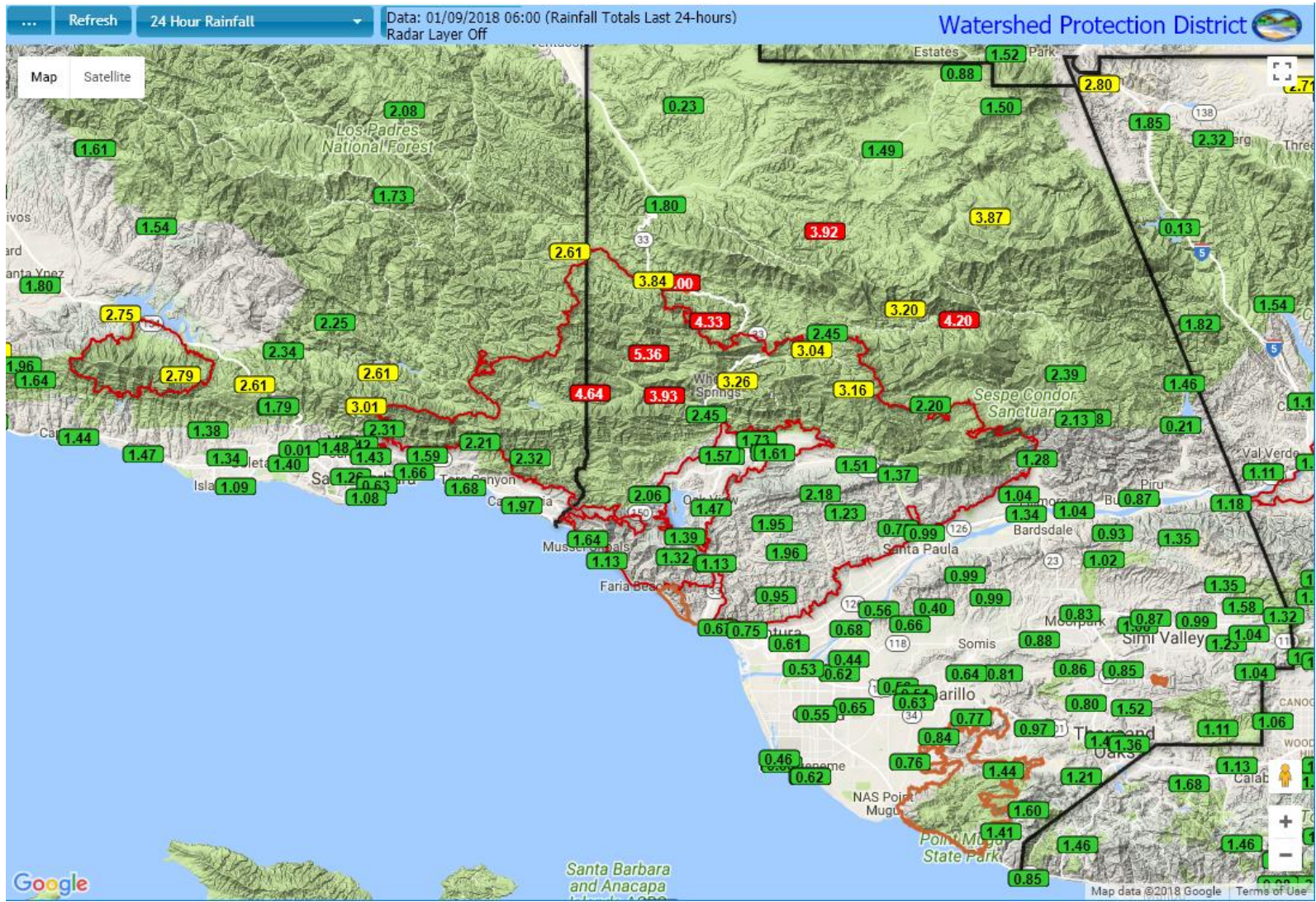
**Adjusted Flood Warning System alarm settings
for debris flows**



USGS Thresholds (Burned Areas)

Time Period	Threshold
15 Minutes	0.20
30 Minutes	0.30
1 Hour	0.50
2 Hours	0.75
3 Hours	1.00

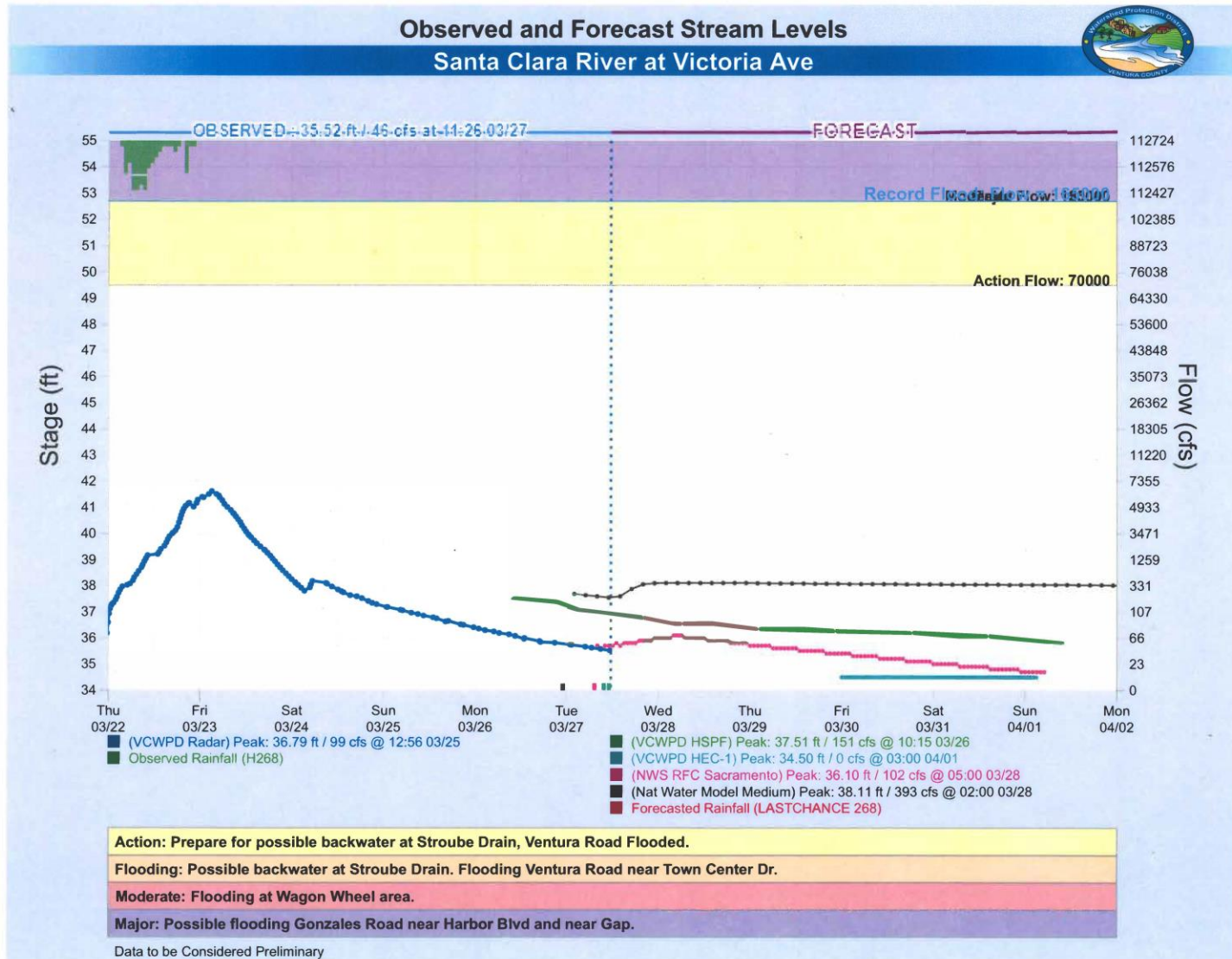
Flood Warning System - Rainfall



Stream Gage Network

3/27/2018

Ventura County WPD VCAHPS Display



Impacts and Inundation

shed.net/fws/VCAHPS/php/ahps_d3.htm?gage=723

NORTH COAST / LA CONCHITA

RAINFALL ENDING 02/08/2018 14:01 PST

	La Conchita - Schaefer Ranch	Seacliff Fire Station	Carpinteria Fire Station
15-min Total:	0.00"	0.00"	0.00"
30-min Total:	0.00"	0.00"	0.00"
1-hour Total:	0.00"	0.00"	0.00"
2-hour Total:	0.00"	0.00"	0.00"
3-hour Total:	0.00"	0.00"	0.00"

Evacuation Status: no evacuations at this time

