



MODOC COUNTY





The Region

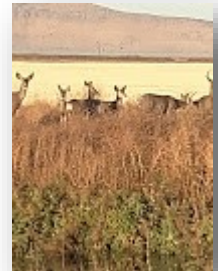
Modoc County est. 1874

Modoc County is located in the rural northeastern corner of California, bordering Nevada and Oregon. With a population of 9,147 (2013 estimate) within an area of 4,200 square miles, the population density in the region is extremely low with only 2.25 people per square mile. Congestion and over population are extremely unlikely. Clean air and lack of automobile traffic are virtually assured. Agriculture and tourism are the economic mainstays for Modoc County.



Among Modoc County's many treasures is the Lava **Beds National Monument** which features over 700 caves, Native American rock art & campsites along with volcanic features.

Tulelake National Wildlife Refuge is a National Wildlife Refuge of the United States in northern California near the Oregon border. It covers 39,116 acres in the Tule Lake Basin. Many bald eagles are found here as well.



Modoc County boasts many lakes, rivers, and streams. Whether you like fly fishing or casting from the shore or in a boat, there is plenty to do and many fish to catch.



Snow skiing is also popular amongst the locals in Modoc County.

Mission Statement:

The primary mission of the Modoc County Road Department is the provision of safe mobility to the current and future users of the roadway system within the Unincorporated area of Modoc County.





The Position



The position of the Deputy Road Commissioner of Maintenance & Operations is to assist the Road Commissioner in managing and directing the maintenance and operations of the Road Department; including planning, organizing and administering all phases of county road and bridge construction; repairing and maintaining rolling stock and other equipment, on a long term and day to day basis; assisting the Road Commissioner in a staff capacity as required. Additional job requirements may include assisting in the creation and supervision of a countywide fleet maintenance program and/or County Buildings and Grounds; or to perform other related work as assigned.

This class plans, oversees, manages and directs all activities of the Road Department, including significant short and long-range capital improvement planning and development, as well as day to day construction and maintenance activities, under the direction of the Road Commissioner. Responsibilities include coordinating with management staff and other county departments and governmental agencies to manage and accomplish the complex and varied functions of the Road Department. This class is distinguished from the Road Commissioner, who has overall management responsibility for county road functions.

QUALIFICATIONS

Knowledge of:

- ◇ Principles and practices of road, bridge, equipment and related infrastructure development and management in a public agency setting
- ◇ Land use, physical design, demographic, environmental and socio/economic concepts as applied to public project planning and operations processes
- ◇ Management principles and practices, including goal setting, program development, implementation and evaluation, and the management of employees through supervision by subordinates
- ◇ Principles and techniques of capital improvement design, construction, funding and long-term maintenance
- ◇ Principles and practices of automotive and equipment purchase, maintenance and repair. Applicable laws, codes and regulations. Techniques for representing the department and the county in meetings and negotiations with a wide variety of individuals and groups
- ◇ Techniques for making effective public presentations
- ◇ Principles of public sector accounting and reporting, such as fund and cost center management, budgeting, accounts payable, invoicing, inventory management, and timecard/payroll accounting
- ◇ Principles of public sector engineering including Federal and State funded project management and oversight, and concepts of traffic engineering.



SALARY AND BENEFITS

ANNUAL SALARY: \$51,228 — \$65,364

The salary and benefits for the Deputy Road Commissioner of Maintenance and Operations include:

- Retirement: 2% at 55 (Current) 2% at 62 (PEPRA)
- Health: County pays for employee and dependent premium up to \$1304.13 per month through Anthem Blue Cross. Dental and Vision are paid for by the County.
- Vacation: Accrual of 2 weeks during years one through four of employment; 3 weeks after four years; 4 weeks after 12 years; and 6 weeks after 19 years of service
- Holiday Pay: 14 scheduled days annually
- Sick Leave: Accrual at the rate of three weeks per year with unlimited maximum accrual
- Life Insurance: A \$10,000.00 term life insurance policy paid by the county
- Deferred Compensation: The county has plans available for employee participation through Aflac, Valic, New York Life, Edward Jones, and Nationwide 457(b) plans. However, the county has no match or contribution



To be considered for this career opportunity, please forward a letter of interest and your resume with and five work-related references (who will not be contacted until mutual interest is established) to:

Modoc County Road Department

202 West 4th Street

Alturas, CA 96101

roaddept@co.modoc.ca.us

OPEN UNTIL FILLED

Following the first review date, application materials will be screened against the criteria in this brochure and preliminary interviews will be scheduled with candidates having the most relevant qualifications. Preliminary reference checks will then be conducted and qualified candidates will be reported to the County Road Commissioner. The County Road Commissioner will determine which candidates to invite to participate in the formal interview process. Selection of the Deputy Road Commissioner of Maintenance and Operations will follow shortly thereafter.

Modoc County is an Equal Opportunity Employer