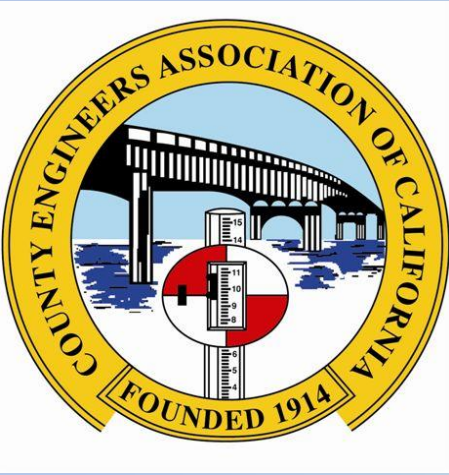


CEAC Survey Policy Committee Meeting

Thursday, March 20, 2025
12:25 to 2:15 PM



AGENDA

Chair, Steve Hennessee, Los Angeles County
Vice Chair, Robert Pachinger, Calaveras County
Vice Chair, Bob Bronkall, Humboldt County

I. Welcome and Self Introductions

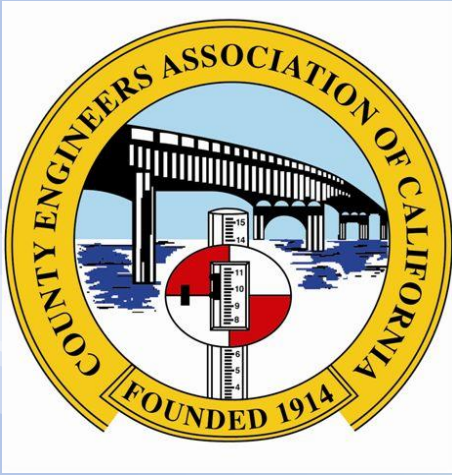
II. Discussion Items

Update on survey work in response to the January fires in
Los Angeles County

Update of CEAC Guide for the Preparation of RS & CRs
CEAC Survey Monument Preservation Toolkit

Update on durable monuments

Update on AI app for review of records of survey and
corner records



AGENDA, CONT'D

III. Future Meeting Topics

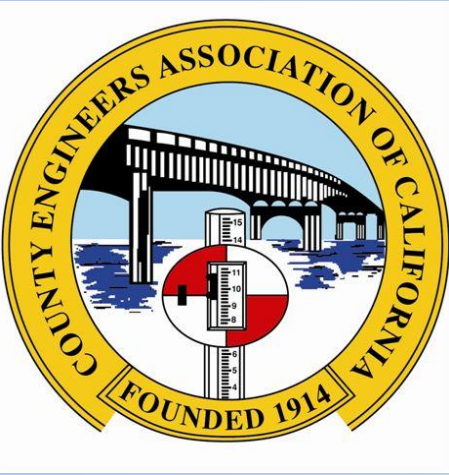
Support legislation that would expand the ability to file amended maps to address as-built conditions without the need for Planning Commission approval

Digital signatures on maps

Digital submittals for Corner Records

Suggestions for future topics

IV. Adjourn



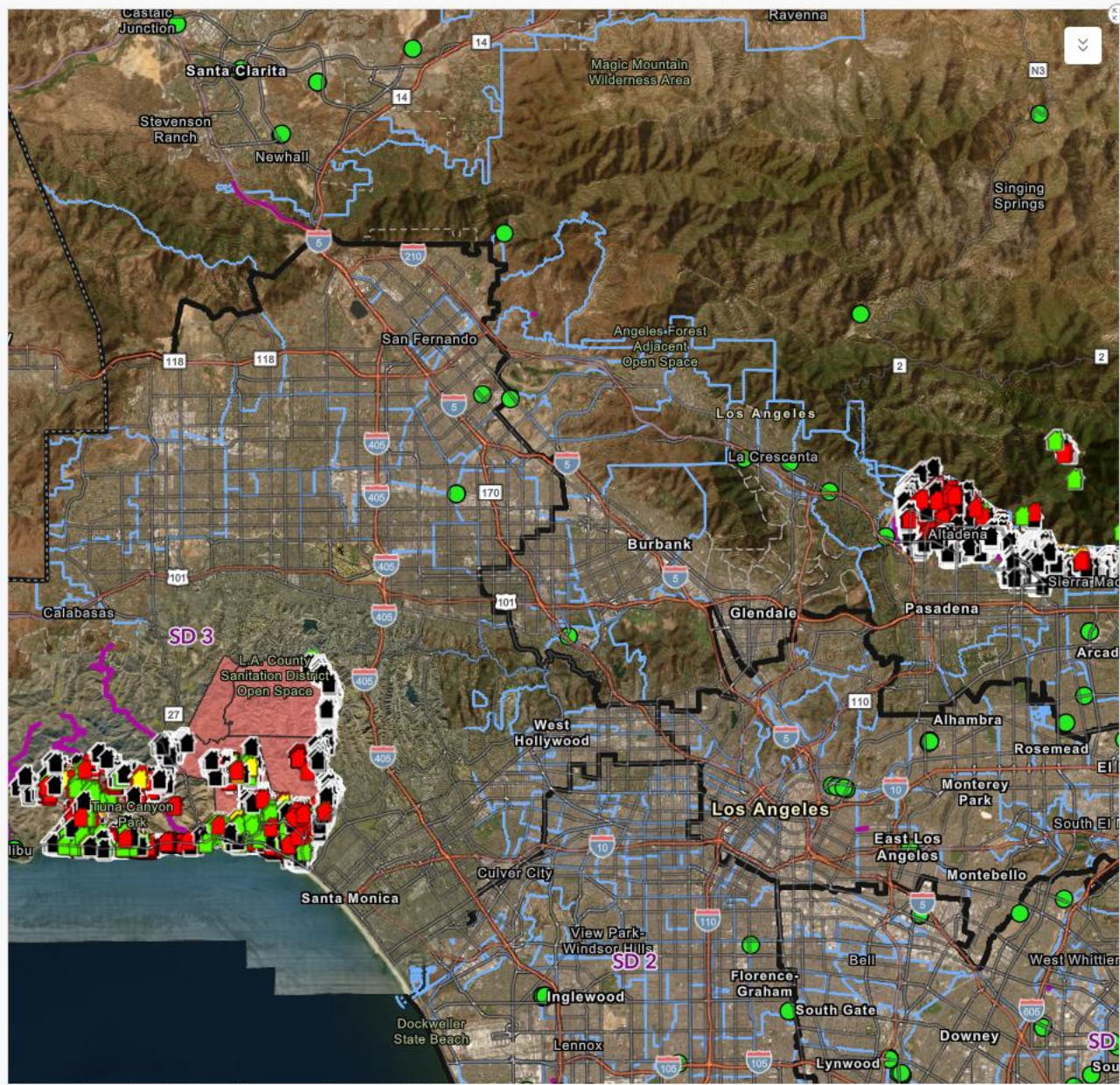
Update on survey work in response to the January fires in Los Angeles County

- Eaton and Palisades Fires started in January 2025
- Phase 1 hazardous material removal completed by US Environmental Protection Agency and their contractors
- Phase 2 hazardous material removal being conducted by US Army Corps of Engineers is ongoing
- Private land surveyors to work with property owners for setting lot corners/confirming setback requirements met.
- GIS Map of damage available

Select a fire boundary
No data

Affected Structures in Palisades and Eaton Fire

- All
- Affected (1-9%)
- Destroyed (>50%)
- Major (26-50%)
- Minor (10-25%)
- No Damage



DINS 2025 Palisades Public View - POSTFIRE

- * Damage
- Destroyed (>50%)
 - Major (26-50%)
 - Minor (10-25%)
 - Affected (1-9%)
 - Inaccessible
 - No Damage

DINS 2025 Eaton Public View - POSTFIRE

- * Damage
- Destroyed (>50%)
 - Major (26-50%)
 - Minor (10-25%)
 - Affected (1-9%)
 - Inaccessible
 - No Damage

PW Facilities

-

DPW.V ROAD CLOSURES

-

DPW.Guard Rail

-

Active Fire Perimeters

- Inactive

Cities and Communities (CSA)

- City of Agoura Hills
- City of Alhambra
- City of Arcadia
- City of Artesia
- City of Azusa
- City of Baldwin Park
- City of Bell
- City of Bell Gardens
- City of Bellflower
- City of Beverly Hills
- City of Burbank

Unofficial Communities (Unincorporated Only)

- Adams Hill
- Addams
- AES Alamitos
- Agoura
- Airport Area
- Alamitos Bay
- Alamitos Bay Marina
- Alamitos Beach
- Alamitos Heights
- Alamitos Ridge
- Alondra Park
- Alpine

Public Works Facilities

- Calabasas/Westlake Village, 26600 Agoura Rd. Suite 110, Calabasas 91,302 (Building & Safety)
- Eaton Yard - Electric Shop, 2811 Woodlyn Rd., Pasadena 91,104 (Operational Services)
- Eaton Yard - East, 2986 New York Dr., Pasadena 91,107 (Flood Maintenance)

Streetlights

123.7k

Inspected Structures in Eaton Fire

18.2k

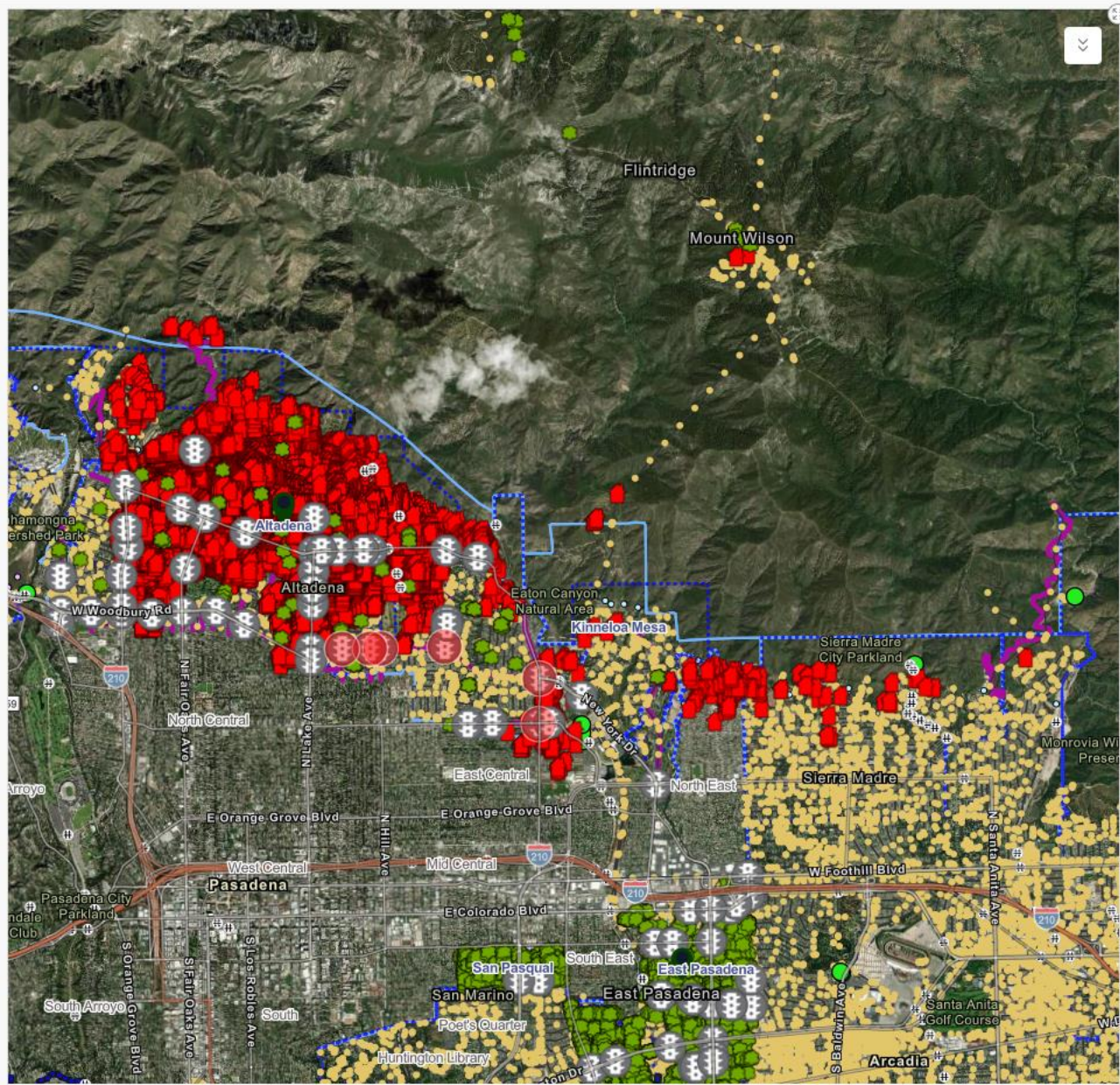
Inspected Structures in Palisades Fire

12.1k

Select a fire boundary
No data

Affected Structures in Palisades and Eaton Fire

- All
- Affected (1-9%)
- Destroyed (>50%)
- Major (26-50%)
- Minor (10-25%)
- No Damage



Earthstar Geographics | LA County Department of Regional Planning LA County Department of Public Works Zillow Neighborhoods - Last Updated 8/30/2025... Powered by Esri

- Affected (1-9%)
- Inaccessible
- No Damage

DINS 2025 Eaton Public View - POSTFIRE

- * Damage
 - Destroyed (>50%)
 - Major (26-50%)
 - Minor (10-25%)
 - Affected (1-9%)
 - Inaccessible
 - No Damage

Landscape Maintenance District Trees (Public View) - LAPublicWorksLandscapeMaintenanceDistrictTrees

PW Facilities

SCE Distribution circuits

DPW.V ROAD CLOSURES

Sewer Network

- Pump Stations

Cities and Communities (CSA)

- City of Agoura Hills
- City of Alhambra
- City of Arcadia
- City of Artesia
- City of Azusa
- City of Baldwin Park
- City of Bell
- City of Bell Gardens
- City of Bellflower
- City of Beverly Hills
- City of Burbank

Unofficial Communities (Unincorporated Only)

- Adams Hill
- Addams
- AES Alamitos
- Agoura
- Airport Area
- Alamitos Bay
- Alamitos Bay Marina
- Alamitos Beach
- Alamitos Heights
- Alamitos Ridge
- Alondra Park
- Alondra

Public Works Facilities

- Calabasas/Westlake Village, 26600 Agoura Rd. Suite 110, Calabasas 91,302 (Building & Safety)
- Eaton Yard - Electric Shop, 2811 Woodlyn Rd., Pasadena 91,104 (Operational Services)
- Eaton Yard - East, 2986 New York Dr., Pasadena 91,107 (Flood Maintenance)

Streetlights

123.7k

Inspected Structures in Eaton Fire

9.4k

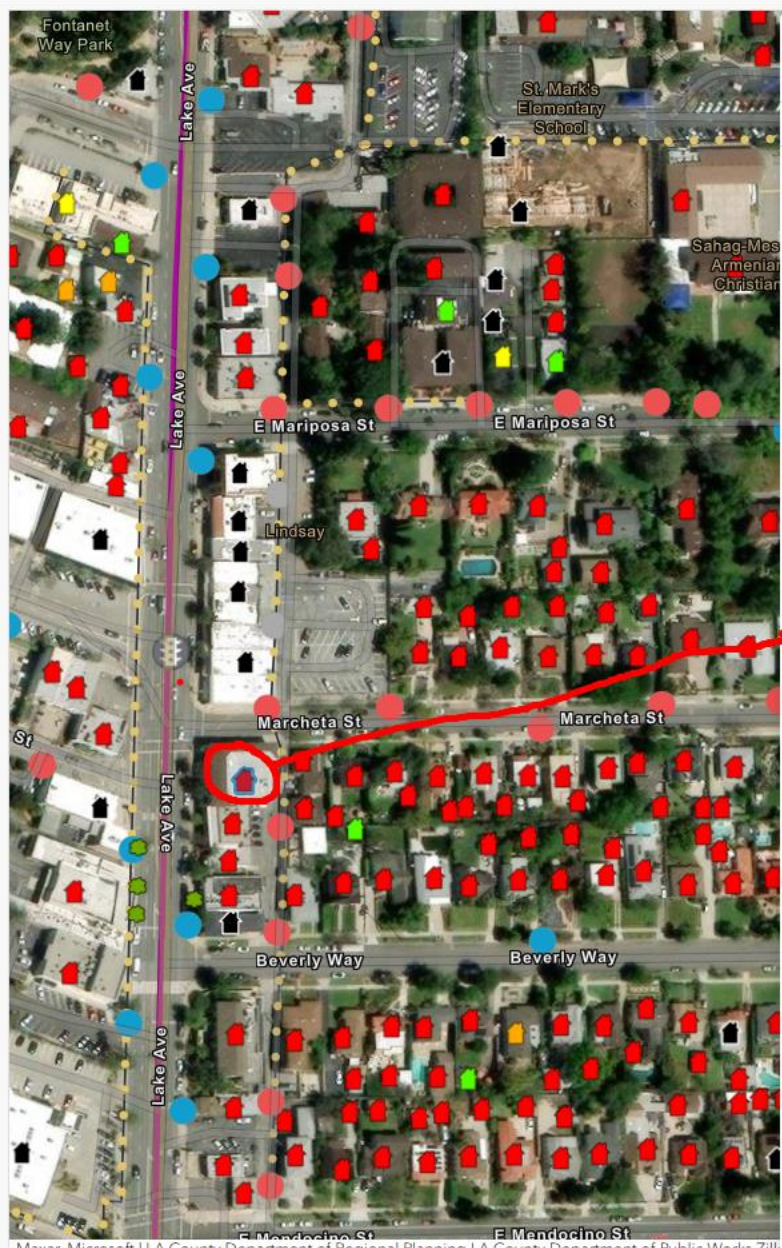
Inspected Structures in Palisades Fire

0

Select a fire boundary
No data

Affected Structures in Palisades and Eaton Fire

- All
- Affected (1-9%)
- Destroyed (>50%)
- Major (26-50%)
- Minor (10-25%)
- No Damage



DINS 2025 Eaton Public View - POSTFIRE:

Zoom to Pan

* Damage	Destroyed (>50%)
* Structure Type	Commercial Building Single Story



- Affected (1-9%)
- Inaccessible
- No Damage

DINS 2025 Eaton Public View - POSTFIRE

- * Damage
 - Destroyed (>50%)
 - Major (26-50%)
 - Minor (10-25%)
 - Affected (1-9%)
 - Inaccessible
 - No Damage

Streetlights - DPW TNL.Street Light

- SCE
- Siemens
- LA COUNTY
- OSD
- SIEMENS
- DEVELOPER
- CITY OF LOS ANG
- CITY
- NA
- FUTURE OSD
- Other

Landscape Maintenance District Trees (Public View) - LAPublicWorksLandscapeMain tenanceDistrictTrees

Cities and Communities (CSA)

- City of Agoura Hills
- City of Alhambra
- City of Arcadia
- City of Artesia
- City of Azusa
- City of Baldwin Park
- City of Bell
- City of Bell Gardens
- City of Bellflower
- City of Beverly Hills
- City of Burbank

Unofficial Communities (Unincorporated Only)

- Adams Hill
- Addams
- AES Alamitos
- Agoura
- Airport Area
- Alamitos Bay
- Alamitos Bay Marina
- Alamitos Beach
- Alamitos Heights
- Alamitos Ridge
- Alondra Park
- Alpine

Public Works Facilities

- Calabasas/Westlake Village, 26600 Agoura Rd. Suite 110, Calabasas 91,302 (Building & Safety)
- Eaton Yard - Electric Shop, 2811 Woodlyn Rd., Pasadena 91,104 (Operational Services)
- Eaton Yard - East, 2986 New York Dr., Pasadena 91,107 (Flood Maintenance)

Streetlights

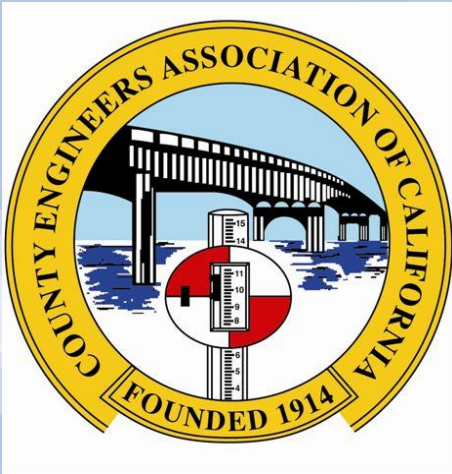
123.7k

Inspected Structures in Eaton Fire

304

Inspected Structures in Palisades Fire

0



INDEX _____ PAGE _____

COUNTY OF LOS ANGELES
DEPARTMENT OF PUBLIC WORKS
SURVEY/MAPPING & PROPERTY MANAGEMENT DIVISION



Job PCA S016	Eaton Fire Event Unincorporated Territory	Date of Survey 2/14/2025	Field Operator G.ALVARADO
Point ID 51014RTK	Monument Description FOUND SPIKE & WASHER, DOWN 4"	Reference RDFB 1726/85-86	+/- Centerline EATON CANYON DR (NOT PROVEN)
Coordinate System United States/NAD83/CA SRS	Horiz. Datum CA SRS Epoch 2017.50 (NAD83)	Zone California Epoch 2017.50 Zone 5	Units US survey foot
Latitude N34°10'25.18270"	Longitude W118°05'33.50423"	Ellipsoid Hgt 840.40	Combined Scale Factor 0.9999323446
Northing 1885593.92	Easting 6533645.59	Epoch 2017.50	Single Baseline Solution (RTK) from PT#5 See G25-002 for CCS83 Values
Picture #3- Close up 		Picture #2- Wide shot 	
		Picture #1- Looking North 	
JULIAN DAY: 045		CONTROLLER: I566131 (TSC7)	
ROD HEIGHT: 6.562 (B.O.Q.R.)		ANTENNA: I566123 (R12i)	
START TIME: 10:59am/11:38am		END TIME: 11:02am/11:41am	

NOTE: See Title Page (FP-1) for the accuracy statement.



Public Works Surveyors efforts:

- Taking RTK observations. See example to left of field book page for a point occupied in the Eaton Fire Area - Found Spike & Washer 4" down on Eaton Canyon Drive
- A point on a GIS layer will be linked to each document
- Over 2,000 points in the Altadena area
- Website: [Land Records Information](#)



Land Records Viewer

Layers

- ☒ Corner Record
- ☒ Road/Public Works Centerline
- ☐ County Engineer Centerline
- ☐ Record of Survey
- ☐ Parcel Map
- ☐ Tract Map
- ☐ Tentative Tract Map
- ☐ Tentative Parcel Map
- ☐ Highway Dedication Map
- ☐ LACA (AM Map)
- ☐ Official Map
- ☐ Patent Map
- ☐ CSB Map (in progress...)
- ☐ Benchmark Baseline Quads ☐ Historical
- ☐ Mile Markers
- ☐ Public Works Field Book Grid

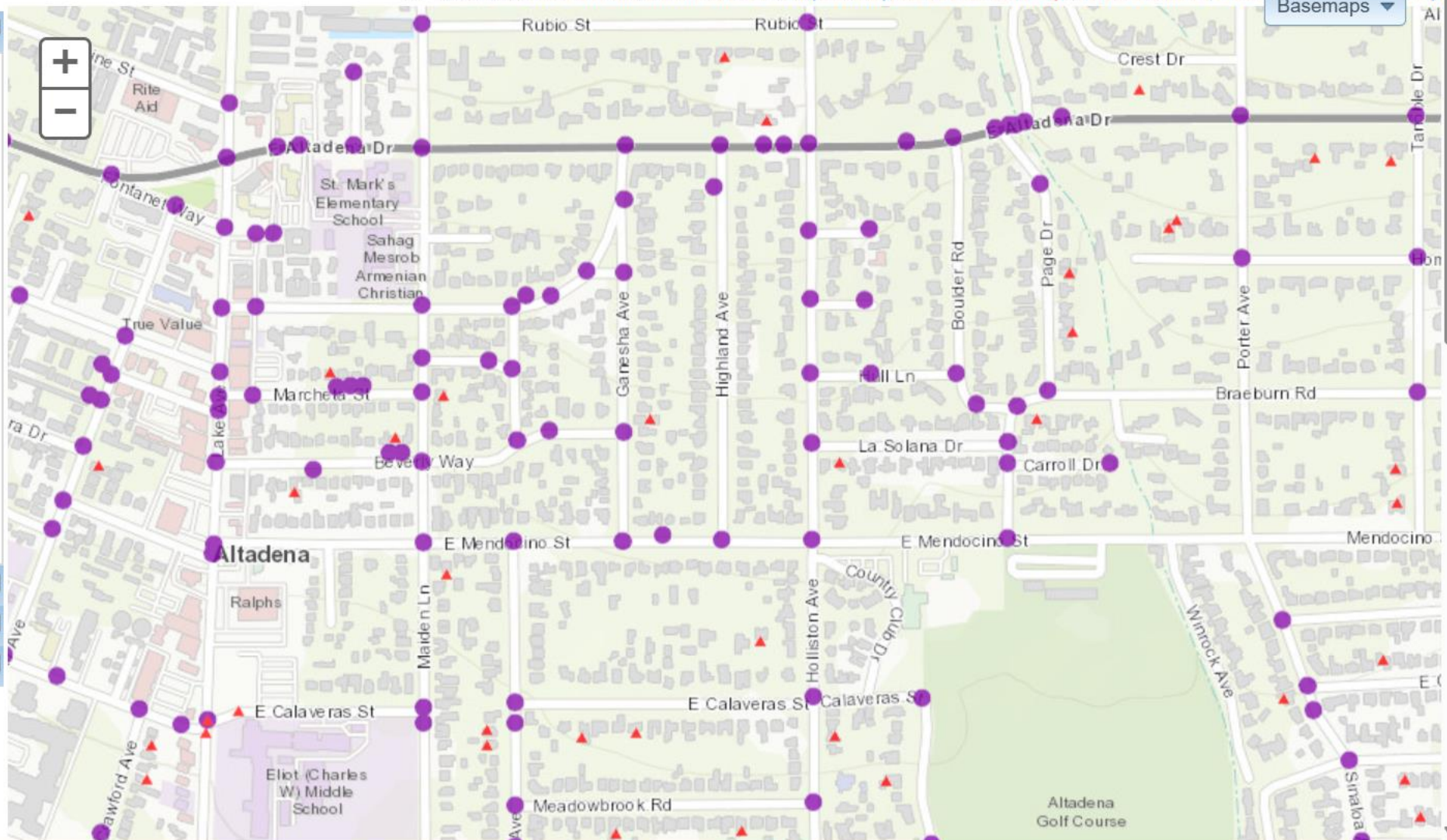
Address/Intersection Location Search

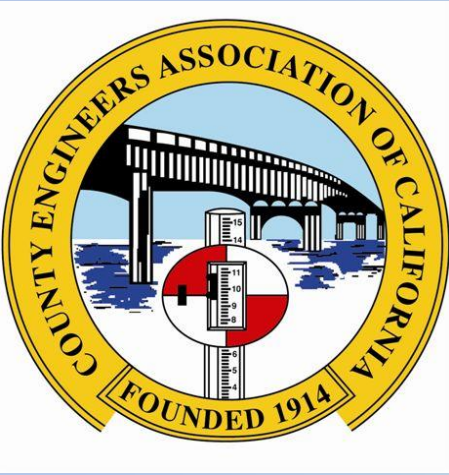
Document Search

Search by Jurisdiction

For questions, [email the site administrator](#). | [Report Misplaced Record](#) | [Help](#) | [Land Records](#) | [LA County Assessor Map](#)

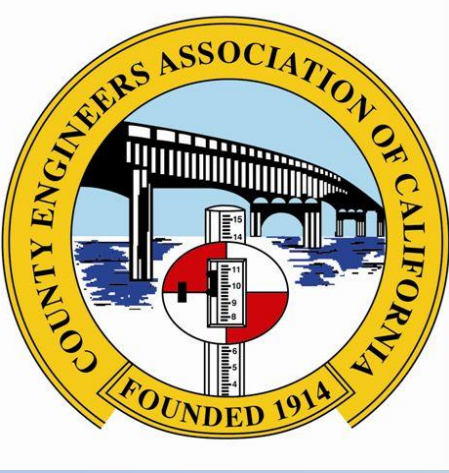
Basemaps





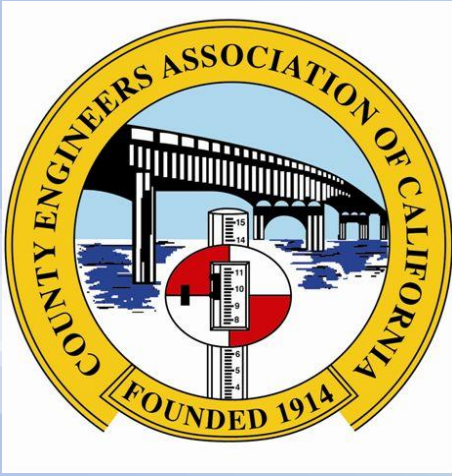
Update of CEAC Guide for the Preparation of RS & CRs

- Comments and suggestions have been incorporated in an updated draft
- Wording to be added because of new section in PLS Act regarding rehabilitation of monuments – 8771.6
- LCSO GPS standard from 1999 to be replaced with reference to document in link: https://sopac-csrc.ucsd.edu/wp-content/uploads/2018/06/CLSA_CSRC_GNSS_Standards_and_Specifications_v1.1.pdf
- Sample maps provided:
 - 29 sample record of survey maps
 - 24 sample corner records
 - Samples from 10 agencies – more are welcome
 - Samples to be in compiled in an online document with an index
- Please submit you comments and sample maps by Monday, April 7th
- A revised version to be circulated with the goal to have approval by this committee in August 2025 and ratified by the CEAC Board in November 2025



CEAC Survey Monument Preservation Toolkit

- Final sample letters/documents to be added
- A revised version to be circulated with the goal to have approval by this committee in August 2025 and CEAC Board ratification by November 2025

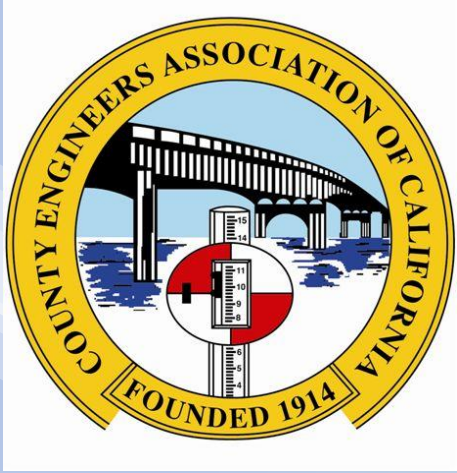


Update on durable monuments

Looking for stand alone document with examples*:

- Iron pipe and rebar ½” and larger, set in non-corrosive environments.
- Large wooden fence posts, such as railroad ties or 6x6 split rail posts.
- Any sort of monument within a monument well.
- Nails set in hard structurally sound surface, like 3” PKs in new asphalt, or a 60d in a blaze.
- Metal washers epoxied to concrete.
- Cuts into a hard surface, like scribed X’s on a curb.
- Aluminum alloy monuments set near the coast, or in salty environments.
- Coated magnets.

*The examples were taken from the CLSA Monument Preservation Committee pages 38 – 39 in the CLSA Board of Directors Meeting Packet dated October 26, 2024.

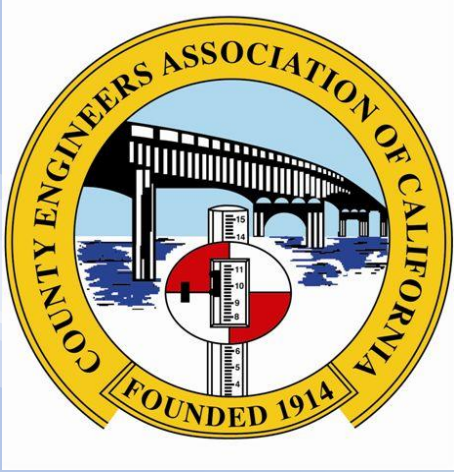


Update on durable monuments, Cont'd

Non permanent/durable examples*:

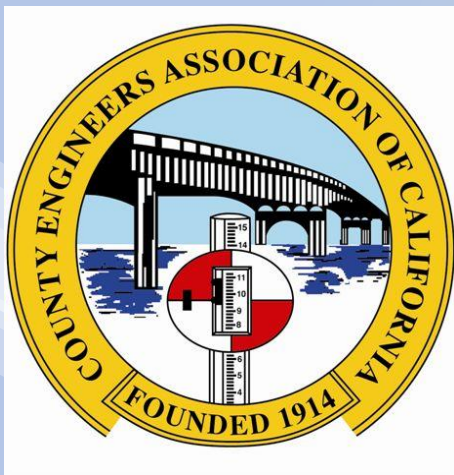
- Painted spots or circles on the ground.
- Wood stakes or hugs with less than 6 square inches of solid rot resistant wood on their top surface.
- Nails, PK, Spikes, etc. set in structurally broken surfaces, like alligatored asphalt, or failed concrete.
- Iron pipes set in corrosive environments, like the ocean shore or caustic soils.
- Low melting point metal monuments set in fire prone areas.

*The examples were taken from the CLSA Monument Preservation Committee pages 38 – 39 in the CLSA Board of Directors Meeting Packet dated October 26, 2024.



Update on AI app for review of records of survey and corner records:

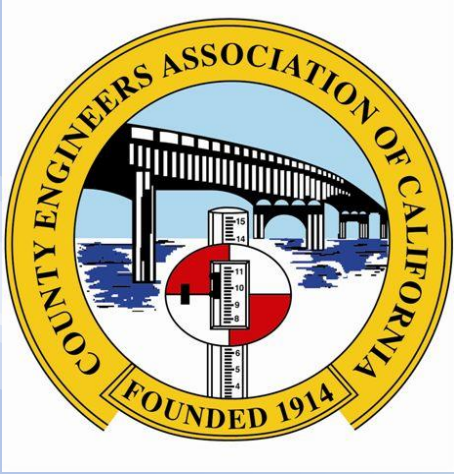
- Initial meeting with vendor in December 2024
- Development pricing:
 - Based on population
 - Setup & Customization Cost waived
 - Annual Contract Value – to be refined
- Initial setup started in January 2025
- Provided PLS Act, Board Rules, CEAC Guide and sample records of survey and corner records with markups and reference documents
- RFP to be letstage



Update on AI app for review of records of survey and corner records:

- Initial meeting with vendor in December 2024
- Development Package Pricing:
 - Based on population
 - Setup & Customization Cost waived
 - Annual Contract Value – to be refined (63% annual revenues)

Population Range (https://www.census.gov/en.html)	Setup & Customization Cost (Value Demonstration through Trial)	Annual Contract Value	No. Of Users
0-150K	\$30,000 \$0	\$120,000	10
150-300K	\$60,000 \$0	\$240,000	15
300K-600K	\$90,000 \$0	\$360,000	20
600K-1MM	\$125,000 \$0	\$500,000	25
1MM +	Custom		



Update on AI app for review of records of survey and corner records:

- Initial setup started in January 2025
- Provided vendor with:
 - PLS Act
 - Board Rules
 - CEAC Guide
 - Sample records of survey and corner records with markups and reference documents (reference maps, deeds, instruments, etc.)
- Provided access to the sandbox – ran software for 2 building plan check samples. Comments were on plans and in a report.
- Next step is to let an RFP



Future Meeting Topics:

- Support legislation that would expand the ability to file amended maps to address as-built conditions without the need for Planning Commission approval
- Digital signatures on maps
- Digital submittals for Corner Records
- Suggestions for future topics

Adjourn