

CORNER RECORD

Agency Index

16 CR 59

Document Number

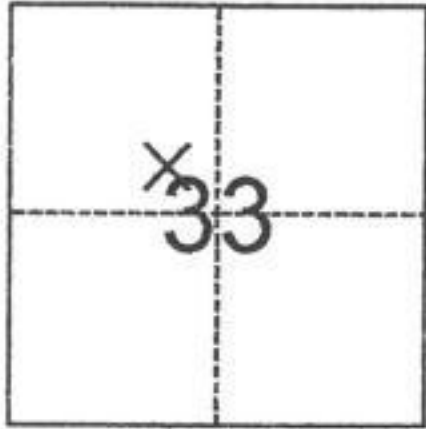
City of Eureka

County of

Humboldt

, California

Brief Legal Description

SE 1/4 NW 1/4 Section 33, T5N, R1W, H.M.**T5N, R1W, H.M.****CORNER TYPE****COORDINATES (Optional)**☐

Government Corner

☐

Control

☐

Meander

☒

Property

☐

Rancho

☐

Other

Date of Survey

06/20/2024

N. _____

E. _____

Elevation _____

Units

☐

Metric

☐

U.S. Survey Foot

Horizontal Datum _____

Zone _____

Epoch Date _____

Vertical Datum _____

☐ Complies with Public Resources Code §§8801-8819☐ Complies with Public Resources Code §§8890-8902**SE 1/4 NW 1/4 SECTION 33**

PLS Act Ref.:

☒

8765(d)

☐

8771

☐

8773

☐

Other:

Corner/

Monument:

☐

Left as found

☐

Established

☐

Rebuilt

☐

Pre-Construction

☐

Found and tagged

☒

Reestablished

☐

Referenced

☐

Post-Construction

Narrative of corner identified and monument as found, set, reset, replaced, or removed:

☒ See sheet #2 for description(s):

Reset three corner monuments illustrated in Book 40 of Surveys, Page 89 that have been removed by sidewalk and driveway construction, using control from that survey.

SURVEYOR'S STATEMENT

This Corner Record was prepared by me or under my direction in conformance with

the Professional Land Surveyors' Act on November 29, 2024

Signed

Michael J. O'Hern

P.L.S. or R.C.E. No.

LS 4829**COUNTY SURVEYOR'S STATEMENT**

This Corner Record was received

DECEMBER 16, 2024

and examined and filed

DECEMBER 31, 2024

Signed

Robert W. Bronkall

P.L.S. or R.C.E. No.

7645

Title

COUNTY SURVEYOR

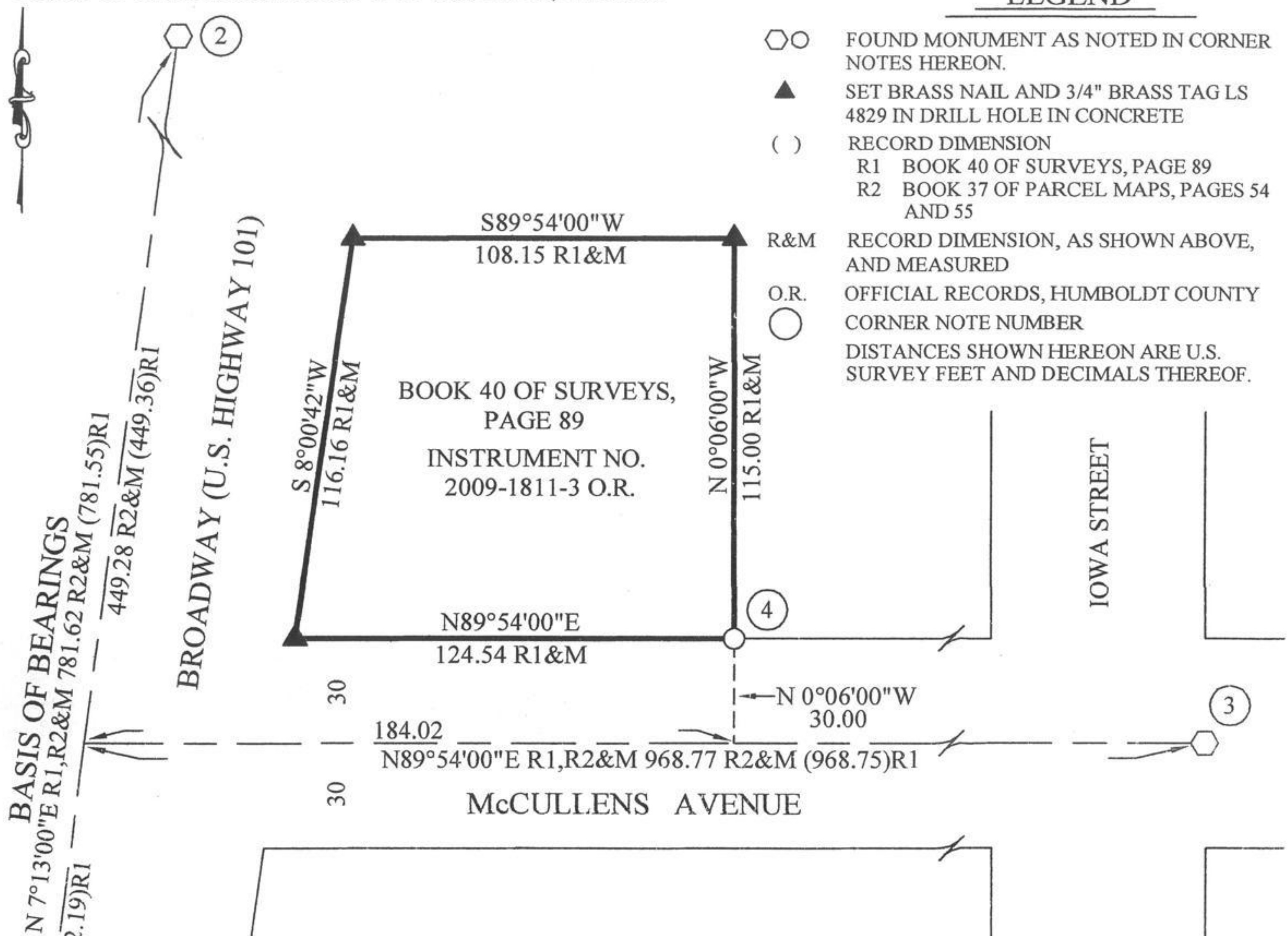
County Surveyor's Comment



BASIS OF BEARINGS: BOOK 40 OF SURVEYS, PAGE 89

LEGEND

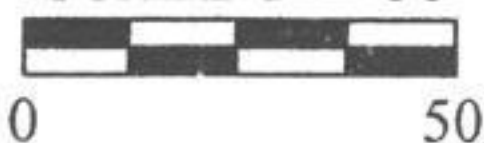
- FOUND MONUMENT AS NOTED IN CORNER NOTES HEREON.
 ▲ SET BRASS NAIL AND 3/4" BRASS TAG LS 4829 IN DRILL HOLE IN CONCRETE
 () RECORD DIMENSION
 R1 BOOK 40 OF SURVEYS, PAGE 89
 R2 BOOK 37 OF PARCEL MAPS, PAGES 54 AND 55
 R&M RECORD DIMENSION, AS SHOWN ABOVE, AND MEASURED
 O.R. OFFICIAL RECORDS, HUMBOLDT COUNTY
 ○ CORNER NOTE NUMBER
 DISTANCES SHOWN HEREON ARE U.S. SURVEY FEET AND DECIMALS THEREOF.



CORNER NOTES

- ① CITY OF EUREKA MONUMENT NO. 78 - FOUND BRASS PIN IN CONCRETE IN MONUMENT WELL WITH COVER, PER THE OFFICIAL MAP OF THE CITY OF EUREKA. SEE BOOK 40 OF SURVEYS, PAGE 89 AND BOOK 37 OF PARCEL MAPS, PAGES 54 & 55.
- ② CITY OF EUREKA MONUMENT NO. 77 - FOUND BRASS PIN IN CONCRETE IN MONUMENT WELL WITH COVER, PER THE OFFICIAL MAP OF THE CITY OF EUREKA. SEE BOOK 40 OF SURVEYS, PAGE 89 AND BOOK 37 OF PARCEL MAPS, PAGES 54 & 55.
- ③ CITY OF EUREKA MONUMENT NO. 131 - FOUND COPPERWELD WITH PUNCH MARK IN MONUMENT WELL WITH COVER, PER THE OFFICIAL MAP OF THE CITY OF EUREKA. SEE BOOK 40 OF SURVEYS, PAGE 89 AND BOOK 37 OF PARCEL MAPS, PAGES 54 & 55.
- ④ FOUND 1/2" GALVANIZED IRON PIPE WITH PLASTIC PLUG LS 2820, PER BOOK 40 OF SURVEYS, PAGE 89 (CORNER NOTE 4 THEREON). A 1" IRON PIPE WITH BROKEN OFF PLASTIC PLUG BEARS N62°31'W 0.37 FEET.

SCALE 1" = 50'


 HEARTWOOD HOLDINGS, LLC
 CORNER RECORD
 PAGE 2 OF 2