

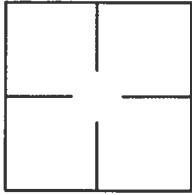
PWFB 1031

2464

CORNER RECORD

Agency Index _____

Document Number _____

City of UNINCORPORATED TERRITORYCounty of LOS ANGELES, CaliforniaBrief Legal Description CENTERLINE INTERSECTION OF DOUBLETREE LANE AND BELLORITA STREET

T.2S., R.10W., S.B.M.

CORNER TYPE

- ☐ Government Corner ☐ Control
☐ Meander ☐ Property
☐ Rancho ☒ Other

Date of Survey AUGUST 18, 2022

COORDINATES (Optional)

N. 1814191.37 E. 6591932.26Elevation 518.03'Units ☐ Metric ☒ U.S. Survey FootHorizontal Datum CCS83Zone V Epoch Date 2017.50Vertical Datum NAVD88; L.A. Co OTTERBEIN QUAD 2013 ADJ.☒ Complies with Public Resources Code §§8801-8819☒ Complies with Public Resources Code §§8890-8902PLS Act Ref: ☐ 8765(d)☒ 8771☐ 8773☐ Other:Corner/
Monument:☒ Left as found☐ Established☐ Rebuilt☐ Pre-Construction☐ Found and tagged☐ Reestablished☒ Referenced☐ Post-Construction

Narrative of corner identified and monument as found, set, reset, replaced, or removed:

☒ See sheet #2 for description(s):

SURVEYOR'S STATEMENT

This Corner Record was prepared by me or under my direction in conformance with

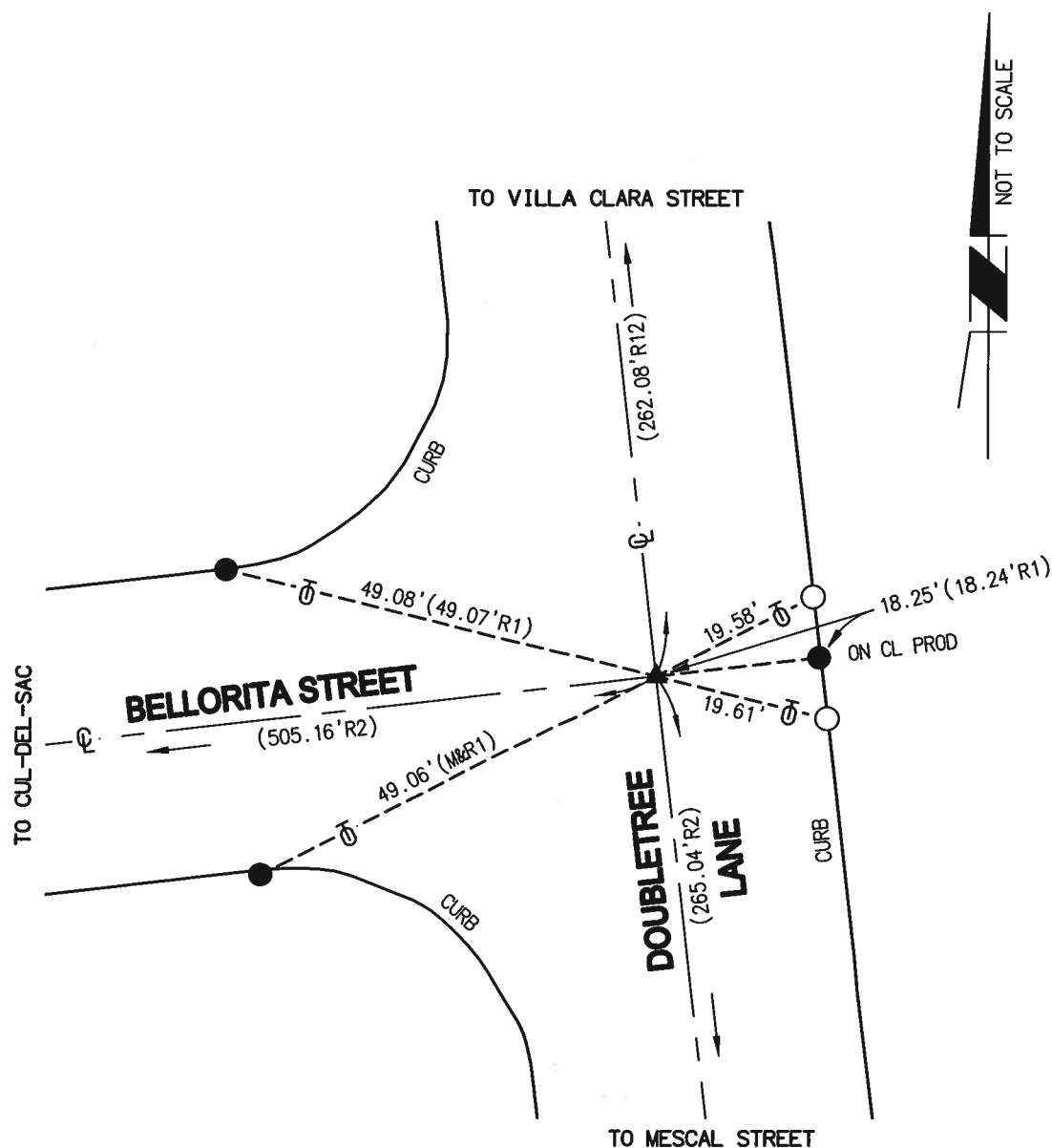
the Professional Land Surveyors' Act on SEPTEMBER 5, 2023.Signed L. L. Truman P.L.S. or R.C.E. No. 5346

COUNTY SURVEYOR'S STATEMENT

This Corner Record was received MAR 18 2024,and examined and filed MAR 21 2024.Signed David W. Farrell P.L.S. or R.C.E. No. 7813Title DEPUTY COUNTY SURVEYOR

County Surveyor's Comment _____





LEGEND

- R - RECORD
- () - RECORD DATA
- M&R - MEASURE AND RECORD PER R
- R1 - L.A. COUNTY P.W.F.B. 1031, PAGE 835
- R2 - RECORD OF SURVEY, R.S.B. 351 / 26 - 32
- - SET LEAD, TACK AND TAG STAMPED "LS 5346 TIE" ON TOP OF CURB, FLUSH
- ▲ - FOUND SPIKE AND TAG STAMPED, "LS 2495" DOWN 0.1' PER R2
- - FOUND LEAD AND TACK ON TOP OF CURB PER R1