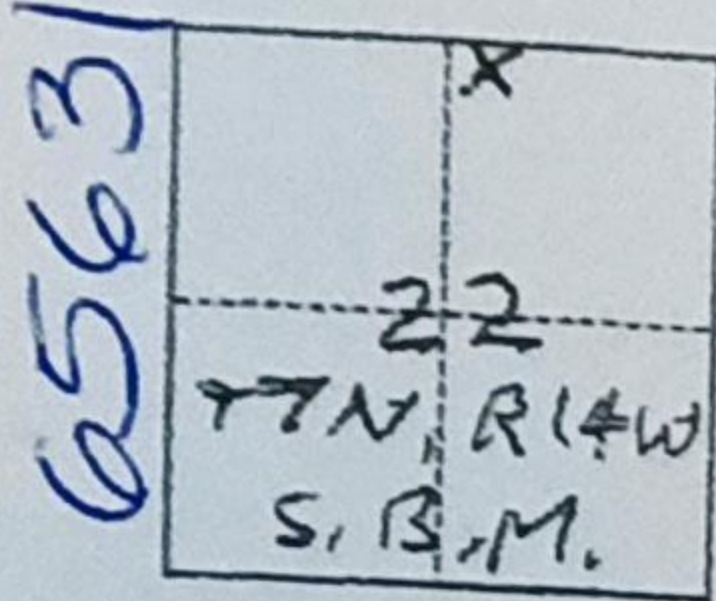


CORNER RECORD

Agency Index _____

Document Number _____

City of UNINCORPORATED AREA County of LOS ANGELES, CaliforniaBrief Legal Description LOT 6, TRACT NO. 28228, PER M.B. 827/8**CORNER TYPE****COORDINATES (Optional)**

- ☐ Government Corner ☐ Control
☐ Meander ☒ Property
☐ Rancho ☐ Other

N. _____ E. _____

Elevation _____

Units

☐ Metric☐ U.S. Survey Foot

Horizontal Datum _____

Zone _____

Epoch Date _____

Vertical Datum _____

☐ Complies with Public Resources Code §§8801-8819☐ Complies with Public Resources Code §§8890-8902

PLS Act Ref.:

☒ 8765(d)☐ 8771☐ 8773☐ Other:Corner/
Monument:☐ Left as found☐ Established☐ Rebuilt☐ Pre-Construction☐ Found and tagged☒ Reestablished☐ Referenced☐ Post-ConstructionNarrative of corner identified and monument as found, set, reset, replaced, or removed:
☒ See sheet #2 for description(s):

CORNERS ARE SET AT PROPORTIONAL MEASURE BETWEEN FOUND CONTROLLING MONUMENTS.

SURVEYOR'S STATEMENT

This Corner Record was prepared by me or under my direction in conformance with

the Professional Land Surveyors' Act on April 29, 2024Signed [Signature] P.L.S. ~~4089~~ No. 4089**COUNTY SURVEYOR'S STATEMENT**

This Corner Record was received

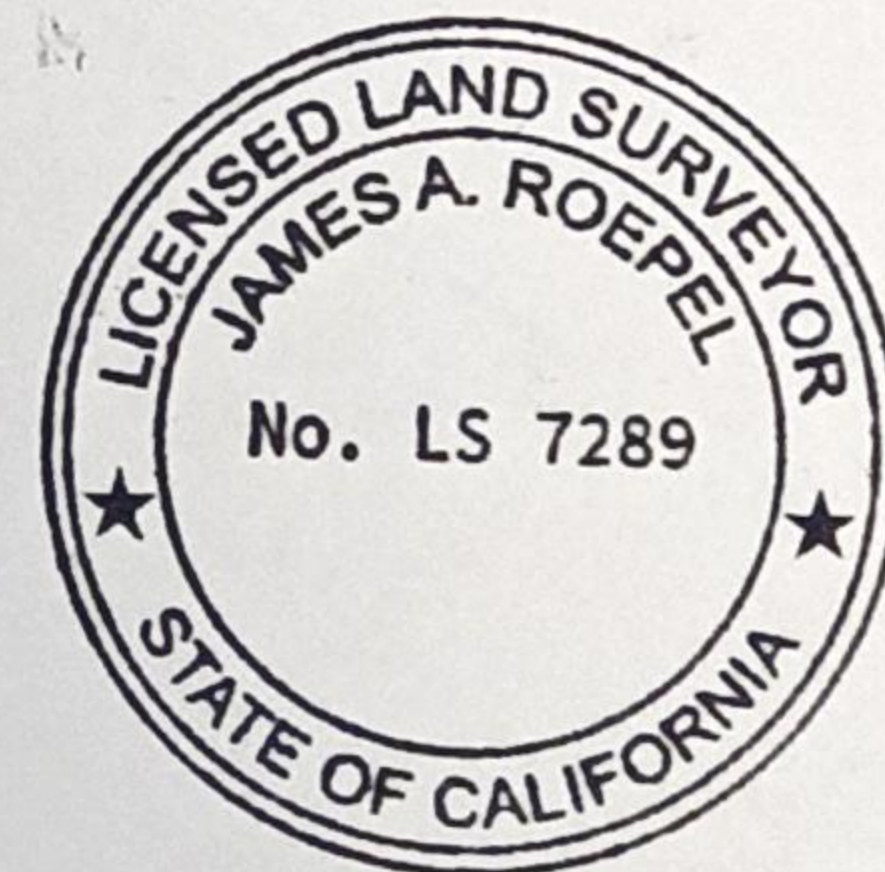
MAY 06 2024

and examined and filed

Signed _____ P.L.S. or R.C.E. No. _____

Title DEPUTY COUNTY SURVEYOR

County Surveyor's Comment



APM 3267-017-014 T.G. 4013/B7

RECORD DATA THIS DETAIL
IS PER CSFB 1869/238

