

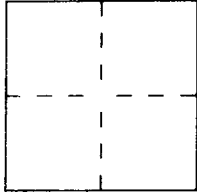
CORNER RECORD

Document Number 3S27-34-170

City of TOWN OF MAMMOTH LAKES

County of MONO, California

Brief Legal Description MAMMOTH VISTA UNIT 1 FILED IN BOOK 7 OF MAPS, PAGES 8 THRU 8G LOCATED IN A PORTION OF THE SW 1/4 OF THE SW 1/4 OF SEC 34, T3S, R27E, MDM



CORNER TYPE

Government Corner ☐ Control ☐
Meander ☐ Property ☐
Rancho ☐ Other ☒
Date of Survey OCTOBER 3, 2022

COORDINATES (Optional)

N. _____
E. _____
Zone _____ Datum _____
Elev. _____

Corner — Left as found ☐ Found and tagged ☐ Established ☐ Reestablished ☐ Rebuilt ☒

Identification and type of corner found: Evidence used to identify or procedure used to establish or reestablish the corner:
FOUND TACK AND ILLEG TAG IN CONCRETE IN 6'Ø MONUMENT WELL IN MAJESTIC PINES DRIVE MARKING A POINT OF CURVE AS SHOWN ON MAMMOTH VISTA UNIT 1 FILED IN BOOK 7 OF MAPS AT PAGES 8 THRU 8G ON NOVEMBER 2, 1970; SHEET 7 OF 8 ATTACHED.

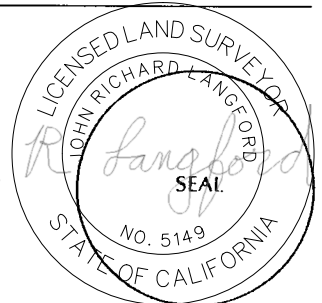
REESTABLISH CORNER USING GPS MEASUREMENT OF CAP MEASURED PRIOR TO CONSTRUCTION.

A description of the physical condition of the monument as found and as set or reset: _____
MONUMENT WAS FOUND IN GOOD CONDITION DOWN 0.8'. MONUMENT WAS REMOVED DURING RECONSTRUCTION OF ROADWAY. SET A 2" DIAMETER BRASS CAP INSCRIBED LS5149 SET IN AN 8"Ø CONCRETE PIER AT MEASURED POSITION OF MONUMENT IN A MONUMENT BOX WITH CAST IRON RIM AND 12" DIAMETER CAST IRON LID. MONUMENT SET 0.7' BELOW FINISH ASPHALT GRADE.

SURVEYOR'S STATEMENT

This Corner Record was prepared by me or under my direction in conformance with the Land Surveyors' Act on OCTOBER 12, 2022 49 _____.

Signed John R. Langford L.S. or R.C.E. Number LS5149

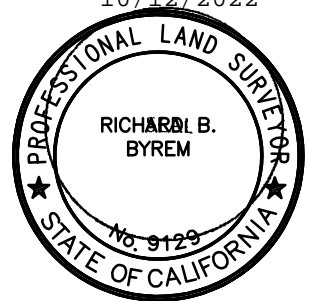


EXP DATE 6/30/23
10/12/2022

COUNTY SURVEYOR'S STATEMENT

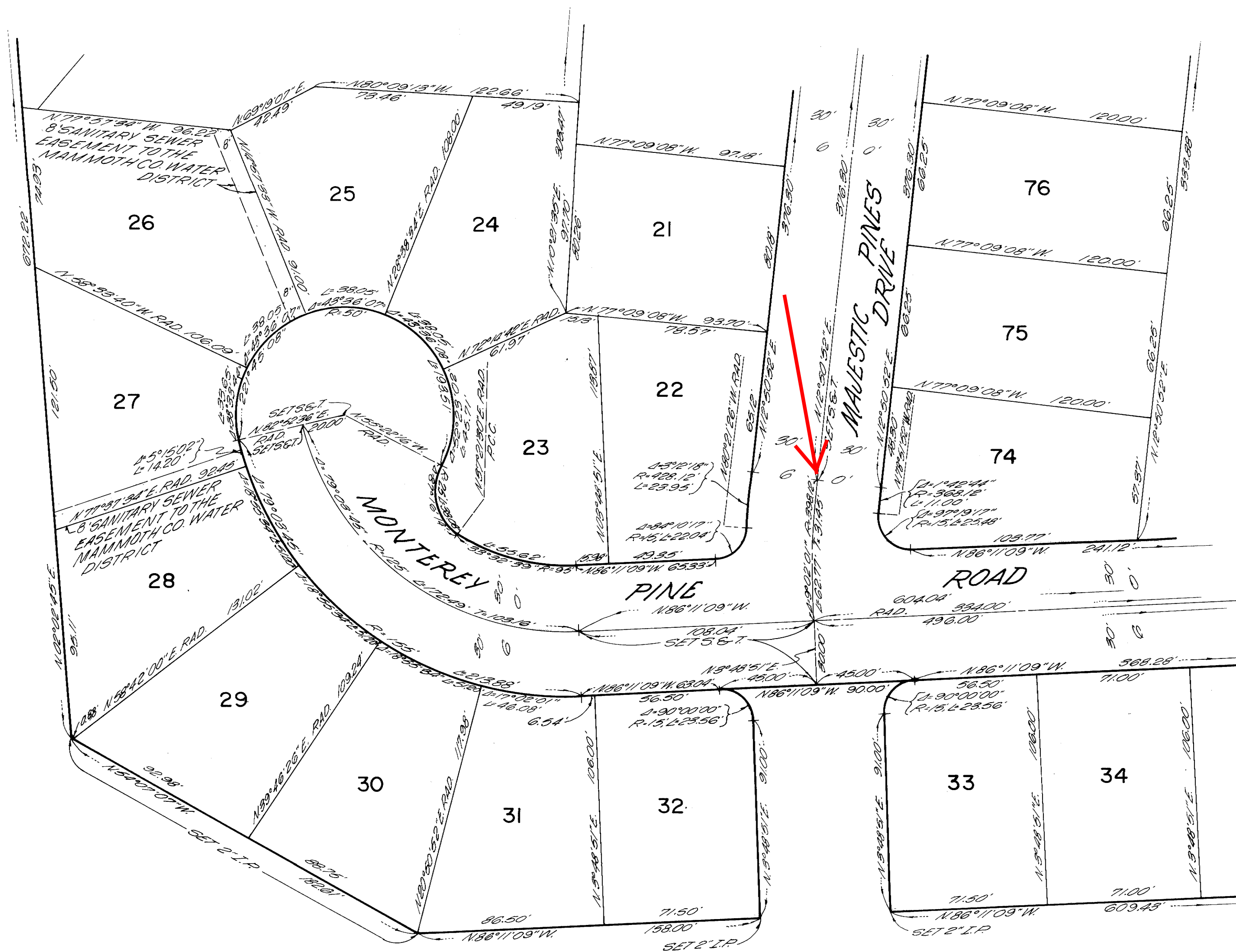
This Corner Record was received November 18, 2022 19 _____ and examined and filed _____ 19 _____.

Signed Richard B. Byrem Title County Surveyor



County Surveyor's Comment _____

SEE SHEET NO. 6



SEE SHEET NO. 8

NOTE: SET 2" I.P. TAGGED R.C.E. 15360

MAMMOTH VISTA UNIT NO. 1
 MONO COUNTY, CALIFORNIA
 BEING A SUBDIVISION OF A PORTION OF THE SOUTHWEST
 QUARTER OF THE SOUTHWEST QUARTER
 OF SECTION 34, T.3S., R.27E., M.D.M.

SCALE: 1" = 40'