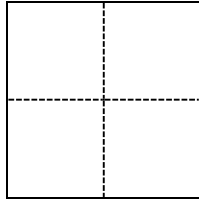


# CORNER RECORD

Agency Index CR 2486Document Number COR24-0023City of \_\_\_\_\_ (unincorporated) County of Sonoma, CaliforniaBrief Legal Description Common corner to Sections 1 & 12, T6N, R7W and Sections 6 & 7 T6N, R6W**CORNER TYPE****COORDINATES (Optional)**

- ☒ Government Corner ☐ Control  
☐ Meander ☐ Property  
☐ Rancho ☐ Other

Date of Survey February 8, 2024

N. \_\_\_\_\_ E. \_\_\_\_\_

Elevation \_\_\_\_\_

Units ☐ Metric ☐ U.S. Survey Foot

Horizontal Datum \_\_\_\_\_

Zone \_\_\_\_\_ Epoch Date \_\_\_\_\_

Vertical Datum \_\_\_\_\_

☐ Complies with Public Resources Code §§8801-8819☐ Complies with Public Resources Code §§8890-8902PLS Act Ref.: ☒ 8765(d) ☐ 8771 ☒ 8773 ☐ Other:Corner/Monument: ☐ Left as found ☐ Established ☐ Rebuilt ☐ Pre-Construction☐ Found and tagged ☐ Reestablished ☐ Referenced ☐ Post-Construction

Narrative of corner identified and monument as found, set, reset, replaced, or removed:

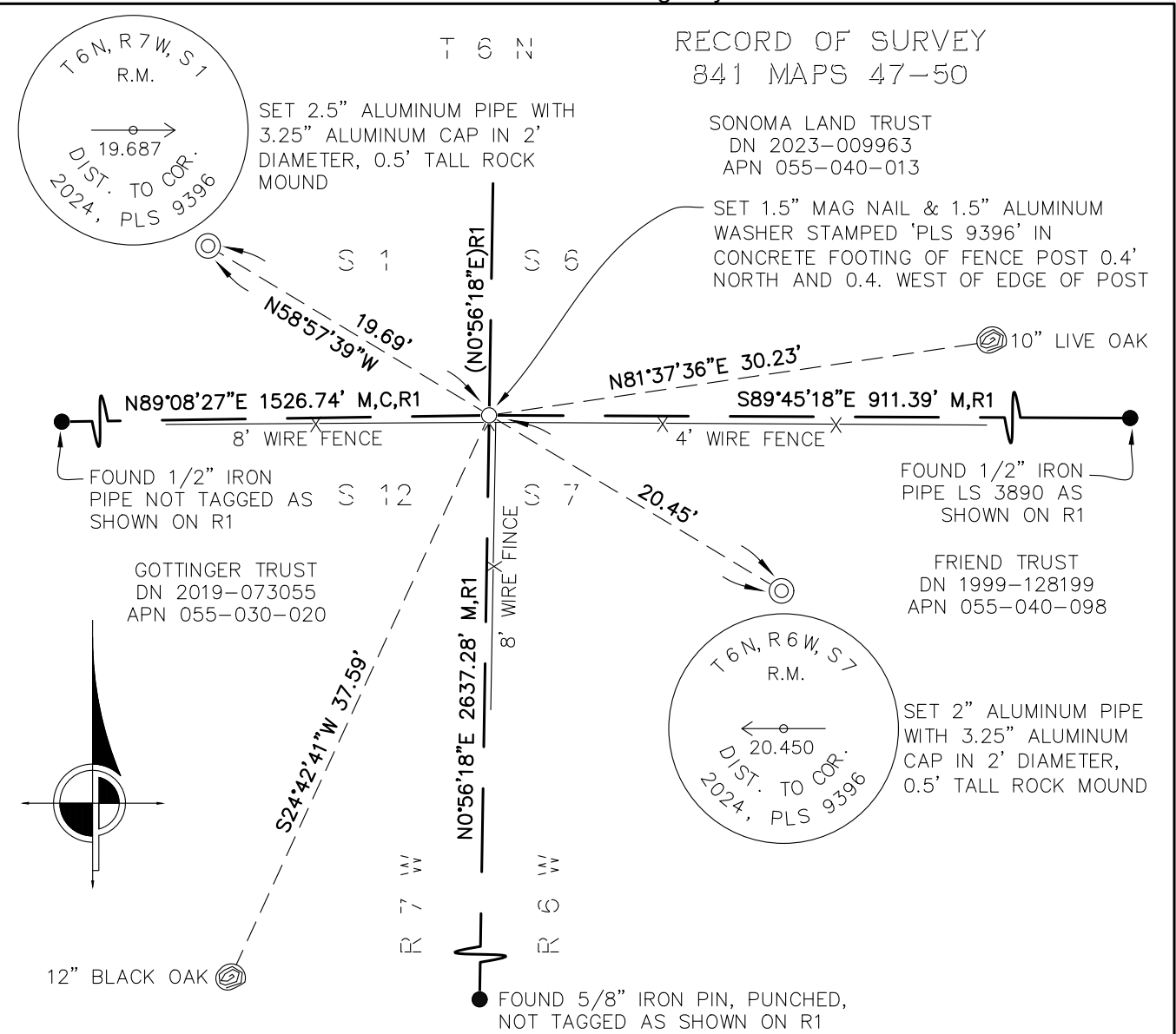
☒ See sheet #2 for description(s):

Section corner cap was found hanging in newly constructed 8' wire fence. No evidence of original position nor any accessories found. Section corner determined obliterated and reestablished per Record of Survey filed in Book 841 of Maps at Pages 47 through 50 (Corner Note 'G'), Sonoma County Records. Set mag nail and aluminum washer at said location (in concrete fence-post footing). Established bearing trees and reference monuments as shown on sheet 2.

**SURVEYOR'S STATEMENT**

This Corner Record was prepared by me or under my direction in conformance with

the Professional Land Surveyors' Act on February 12, 2024.Signed  (P.L.S.) or R.C.E. No. 9396**COUNTY SURVEYOR'S STATEMENT**This Corner Record was received February 12, 2024and examined and filed March 12, 2024.Signed  P.L.S. or R.C.E. No. 7590Title County Surveyor**County Surveyor's Comment**



## NOTES


ALL DISTANCES AND DIMENSIONS ARE IN US SURVEY FEET AND DECIMALS THEREOF.

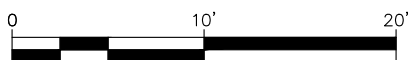
ALL TIES ARE AT RIGHT ANGLES UNLESS OTHERWISE NOTED.

ALL LINES ARE STRAIGHT-LINE TIES UNLESS OTHERWISE NOTED.

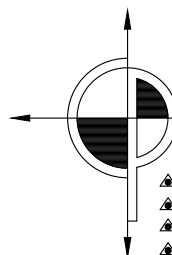
BEARING TREES WERE MARKED WITH SET 60d NAILS 2" ABOVE ROOT CROWN. ONE NAIL IN CENTER OF EACH TREE FACING CORNER FOR ANGLE, AND ONE NAIL IN SIDE OF EACH TREE FOR DISTANCE. TREES WERE NOT SCRIBED.

## LEGEND

- SECTION LINE
- SURVEY TIE
-  BEARING TREE AS DESCRIBED SET BY THIS SURVEY
- R1 RECORD OF SURVEY  
841 MAPS 47-50
- M MEASURED
- C CALCULATED



1" = 10'



**CINQUINI & PASSARINO, INC.**  
**LAND SURVEYING**

- ▲ BOUNDARY
- ▲ TOPOGRAPHIC
- ▲ CONSTRUCTION
- ▲ SUBDIVISIONS

1360 No. Dutton Ave.  
Santa Rosa, Ca. 95401  
Phone: (707) 542-6268  
Fax: (707) 542-2106

WWW.CINQUINIPASSARINO.COM