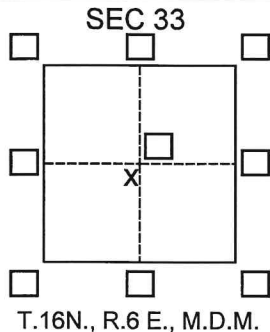


# CORNER RECORD

Agency Index CR195

Document Number \_\_\_\_\_

City of Smartsville County of Yuba, CaliforniaBrief Legal Description PARCEL 1 & 2 OF BOOK 83 PARCEL MAPS PAGE 27

## CORNER TYPE

Government Corner ☐ Control ☐  
Meander ☐ Property ☒  
Rancho ☐ Other ☐

Date of Survey March 28, 2022

## COORDINATES (Optional)

N. \_\_\_\_\_ E. \_\_\_\_\_

Elevation \_\_\_\_\_

Units ☒ Metric ☐ U.S. Survey Foot ☐

Horizontal Datum \_\_\_\_\_

Zone \_\_\_\_\_ Epoch Date \_\_\_\_\_

Vertical Datum \_\_\_\_\_

☐ Complies with Public Resources Code §§8801-8819☐ Complies with Public Resources Code §§8890-8902PLS Act Ref.: ☒ 8765(d) ☐ 8771 ☐ 8773 ☐ Other: \_\_\_\_\_

Corner/  
Monument: ☐ Left as found ☐ Established ☐ Rebuilt ☐ Pre-Construction  
☐ Found and tagged ☒ Reestablished ☐ Referenced ☐ Post-Construction

Narrative of corner identified and monument as found, set, reset, replaced, or removed:

☐ See sheet #2 for description(s):

Found monuments per Book 83 Maps Page 27. Set the southeast corner of parcel 1  
with 1" Iron Pipe Tagged LS 4370.  
SEE ATTACHED SKETCH

## SURVEYOR'S STATEMENT

This Corner Record was prepared by me or under my direction in conformance with

the Professional Land Surveyors' Act on 4-06-22Signed Andrew R. Cassano L.S. or R.C.E. No. PLS 4370

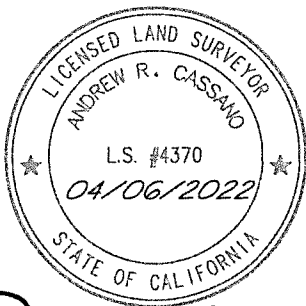
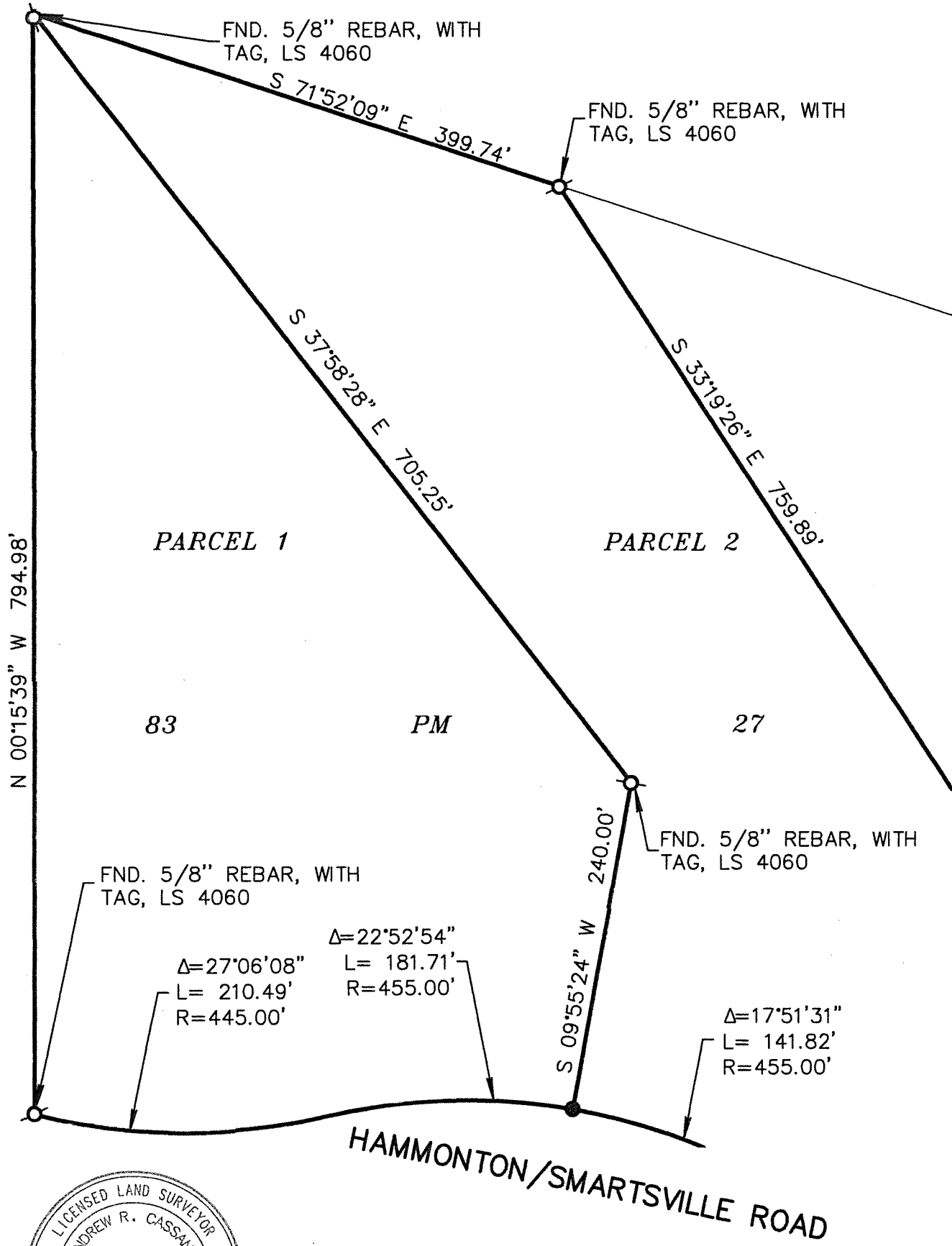
## COUNTY SURVEYOR'S STATEMENT

This Corner Record was received MAY 2, 2022and examined and filed MAY 9, 2022Signed Michael Glen Lee L.S. or R.C.E. No. 7853Title County Surveyor

County Surveyor's Comment \_\_\_\_\_

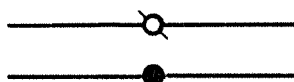


FEZ  
SCALE: 1" = 100'



Andrew R. Cassano

### LEGEND



FOUND MONUMENT AS NOTED  
SET 1" IRON PIPE & TAG LS 4370