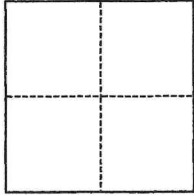


# CORNER RECORD

Agency Index CR-197

Document Number \_\_\_\_\_

City of Loma Rica County of Yuba, CaliforniaBrief Legal Description Parcel 3, of RBK 69, Pg 2, of the Yuba County Records.**CORNER TYPE****COORDINATES (Optional)**

- ☐ Government Corner ☐ Control  
☐ Meander ☒ Property  
☐ Rancho ☐ Other

Date of Survey June 15, 2023

N. \_\_\_\_\_ E. \_\_\_\_\_

Elevation \_\_\_\_\_

Units ☐ Metric ☐ U.S. Survey Foot

Horizontal Datum \_\_\_\_\_

Zone \_\_\_\_\_ Epoch Date \_\_\_\_\_

Vertical Datum \_\_\_\_\_

☐ Complies with Public Resources Code §§8801-8819☐ Complies with Public Resources Code §§8890-8902PLS Act Ref.: ☒ 8765(d) ☐ 8771 ☐ 8773 ☐ Other:

Corner/  
Monument: ☐ Left as found ☐ Established ☐ Rebuilt ☐ Pre-Construction  
☐ Found and tagged ☒ Reestablished ☐ Referenced ☐ Post-Construction

Narrative of corner identified and monument as found, set, reset, replaced, or removed:

☒ See sheet #2 for description(s):

Reset the southeast of Parcel 3, RBK 69, PG 2, with a 1/2" rebar with plastic cap, stamped LS 6076.  
Also reset the northeast corner of Parcel 3, RBK 69, PG 2 with a 1/2" rebar with plastic cap, stamped LS 6076, at a 4' offset to the east property line.

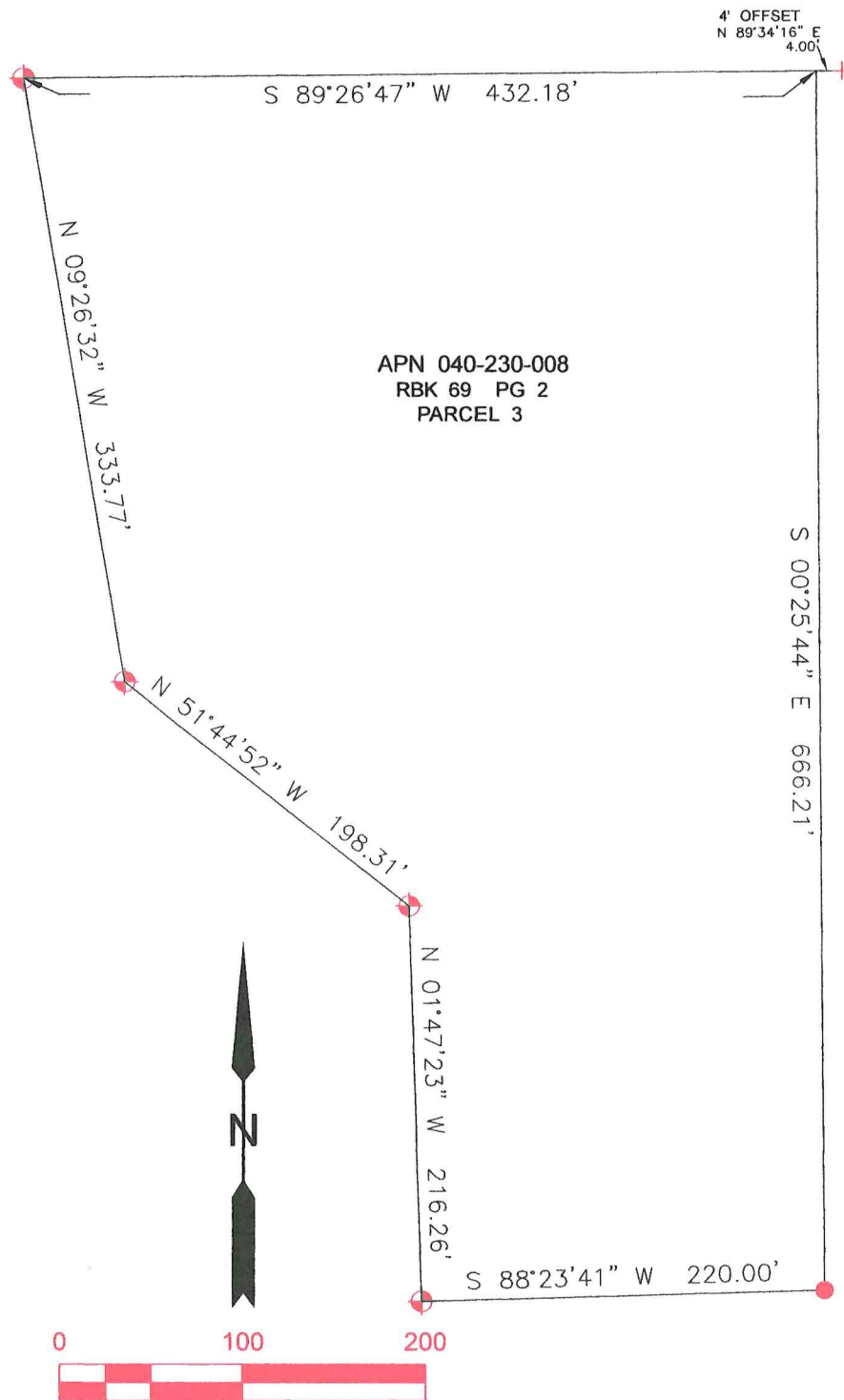
**SURVEYOR'S STATEMENT**

This Corner Record was prepared by me or under my direction in conformance with

the Professional Land Surveyors' Act on 7/6/2023Signed Paul Dunham P.L.S. or R.C.E. No. 6076**COUNTY SURVEYOR'S STATEMENT**This Corner Record was received 7/10/23and examined and filed 9/28/23Signed Michael Glen Lee P.L.S. or R.C.E. No. 7853Title County Surveyor

County Surveyor's Comment \_\_\_\_\_





- ⊕ FND 1/2" IP OPEN
- SET 1/2" REBAR W/CAP, LS 6076
- + SET 1/2" REBAR W/CAP, LS 6076, AT 4' O/S TO E. PROPERTY LINE