

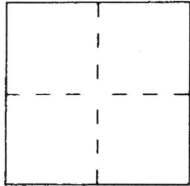
CORNER RECORD

Document Number 5425-28-05

City of BRIDGEPORT

County of MONO, California

Brief Legal Description LOCATED IN THE W1/2 OF THE SE1/4 OF SEC 28, T5N, R25E, MDM



CORNER TYPE

Government Corner ☐ Control ☐
Meander ☐ Property ☐
Rancho ☐ Other ☒
Date of Survey _____

COORDINATES (Optional)

N. _____
E. _____
Zone _____ Datum _____
Elev. _____

Corner — Left as found ☐ Found and tagged ☐ Established ☐ Reestablished ☒ Rebuilt ☐

Identification and type of corner found: Evidence used to identify or procedure used to establish or reestablish the corner:

COPPERWELD MONUMENT PER BOOK 10 OF TRACT MAPS, PAGE 27 (ATTACHED). MONUMENT IS AT THE CENTERLINE INTERSECTION OF CAMERON ROAD AND SIERRA VIEW DRIVE.

A description of the physical condition of the monument as found and as set or reset: FOUND A 1-1/2" DIAMETER COPPERWELD INSCRIBED LS5149 FLUSH WITH PAVEMENT. REESTABLISH CORNER USING GPS MEASUREMENT OF COPPERWELD CAP. SET A 2" DIAMETER ALUMINUM CAP INSCRIBED LS5149 ON A 5/8" DIAMETER REBAR IN A 6" DIAMETER CAST IRON MONUMENT WELL.

SURVEYOR'S STATEMENT

This Corner Record was prepared by me or under my direction in conformance with the Land Surveyors' Act on SEPTEMBER 16, 2015 ~~19~~ .

Signed John R. Langford L.S. or R.C.E. Number LS5149

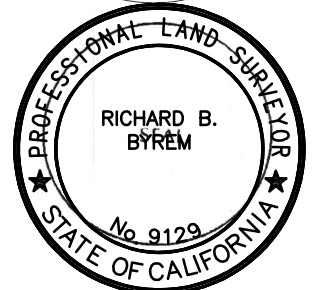


COUNTY SURVEYOR'S STATEMENT

This Corner Record was received _____ 19 ____ and examined

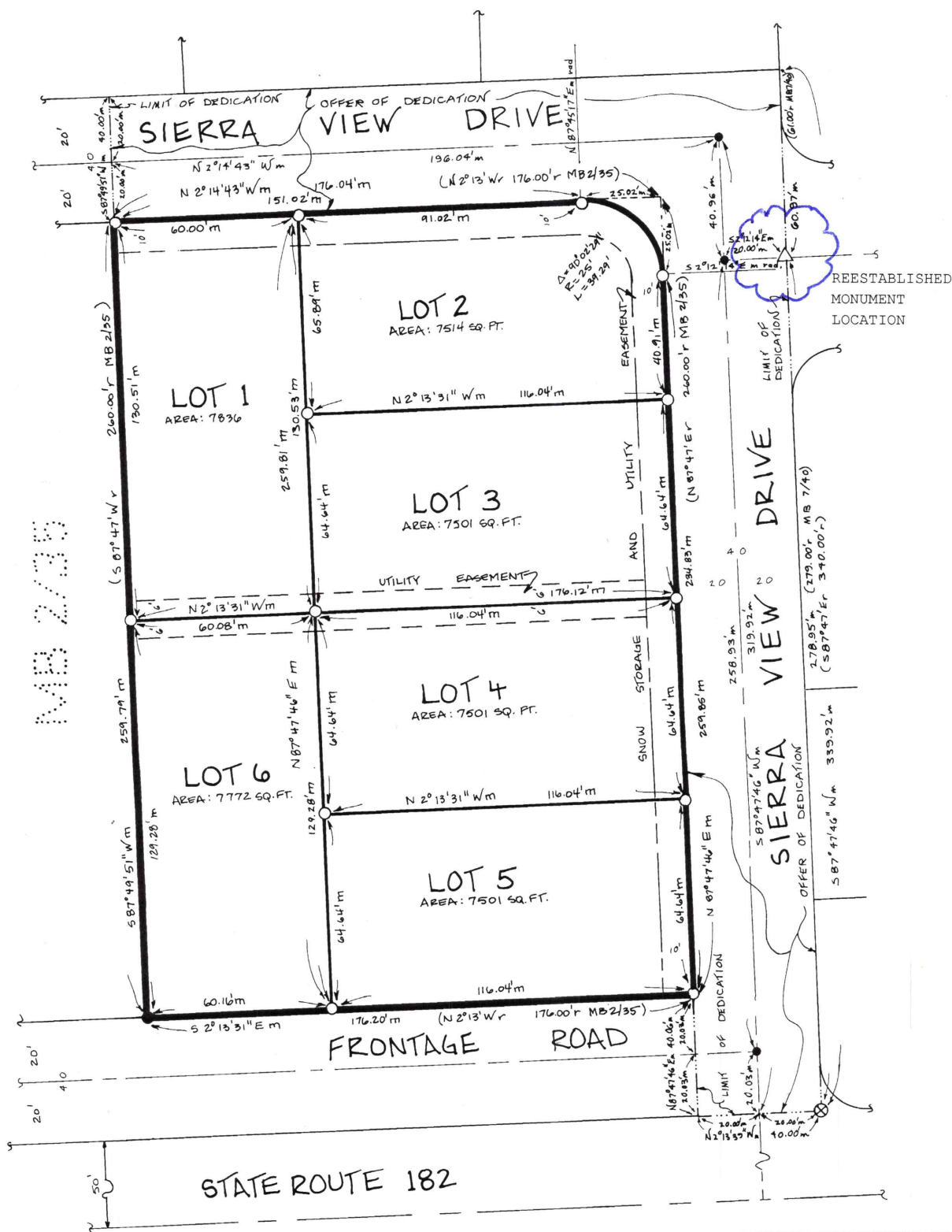
and filed June 26 ~~19~~ 2023

Signed Richard B. Byram Title County Surveyor



County Surveyor's Comment _____

SCALE: 1" = 20'



7.17. had 10 Bgc 27-13