



# SMUD and a clean energy future

CEAC Policy Conference | Aug. 21 , 2025

Gregg Fishman  
SMUD Board President

Powering forward.  
Together.



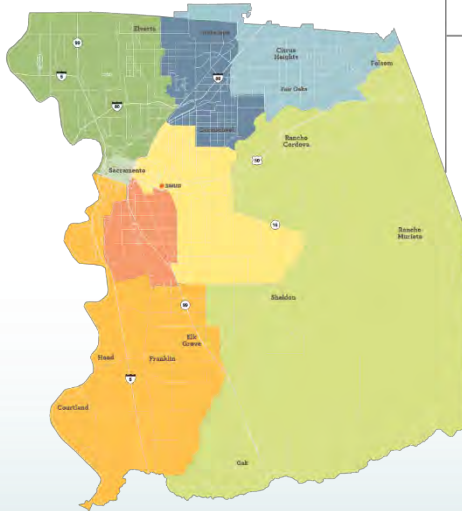
# Introduction to SMUD



# About SMUD

***SMUD is your community-owned, not-for-profit electric service.***

**6th** largest  
community-owned  
in the U.S.



**75+**  
**Years**  
Est. 1946

**2023**  
**Power mix**  
about  
**78%\***  
**carbon-free**



The most  
ambitious goal  
of any large  
utility in the  
United States

~645,000 Customers

## ~2,300 Employees

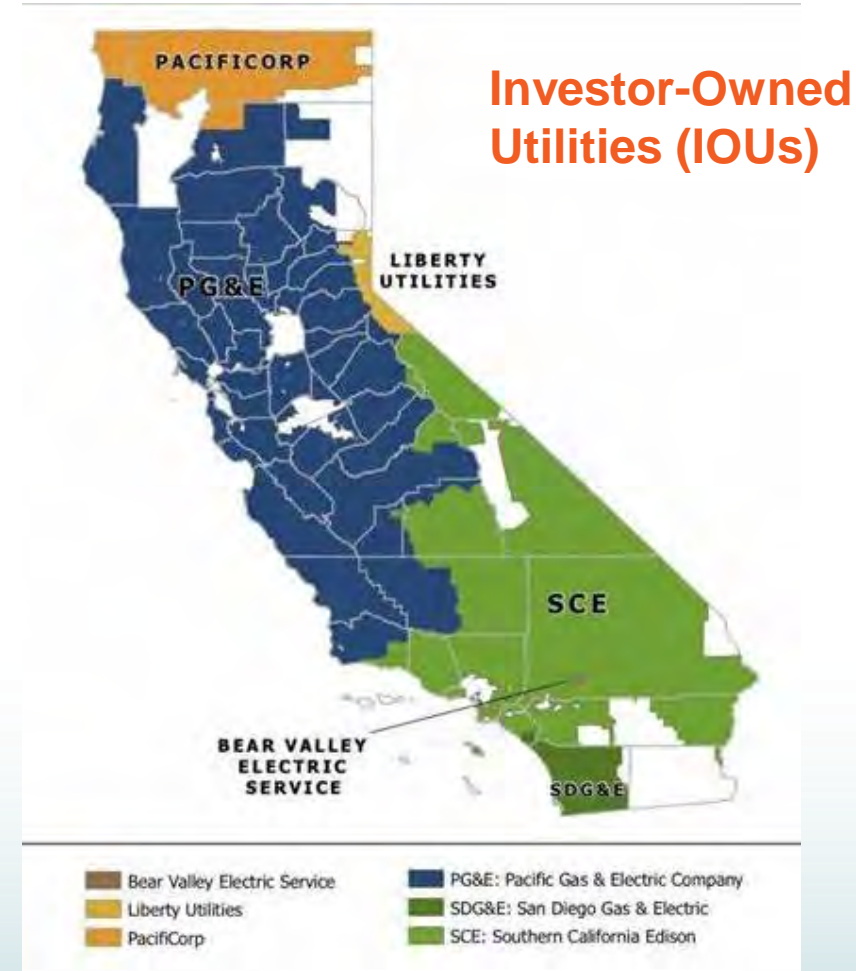
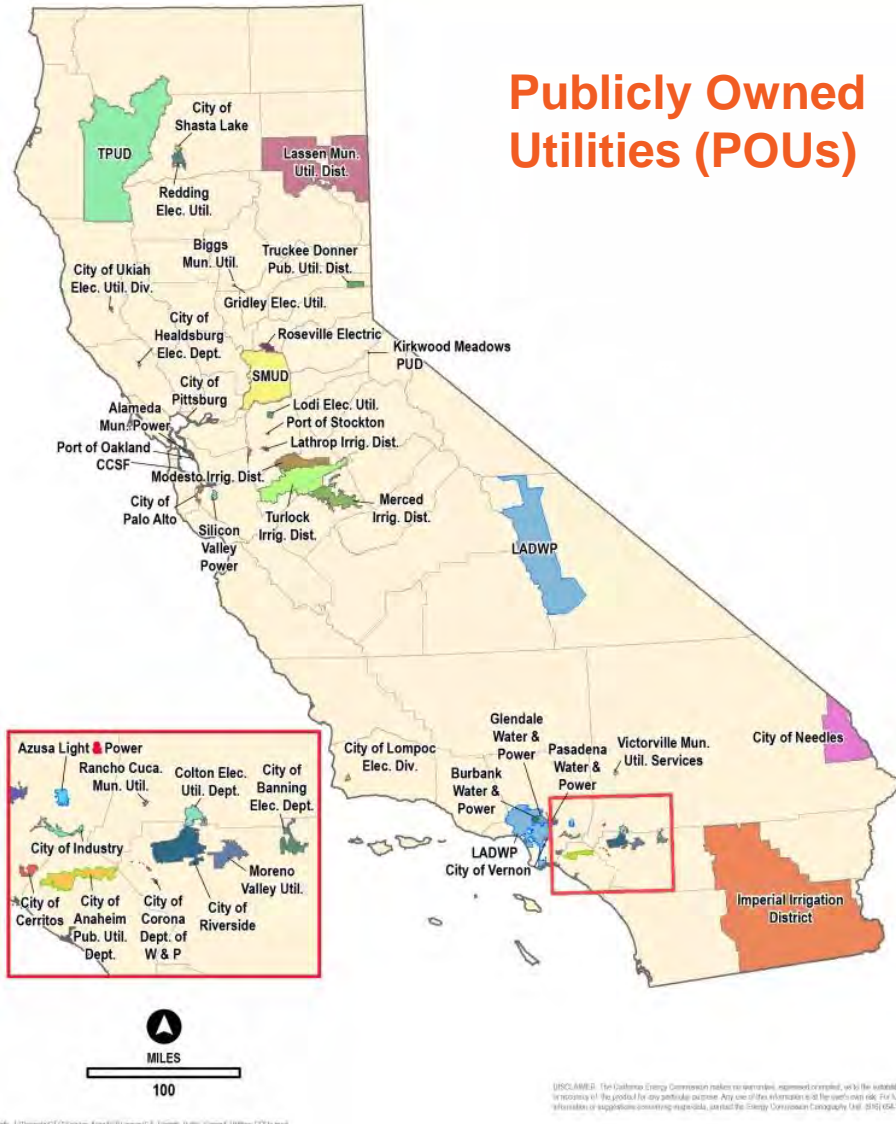


**7 member**  
Elected  
Board of Directors

**SMUD's rates are among the lowest in California,**  
and on average more than **50% lower** than those of neighboring PG&E.



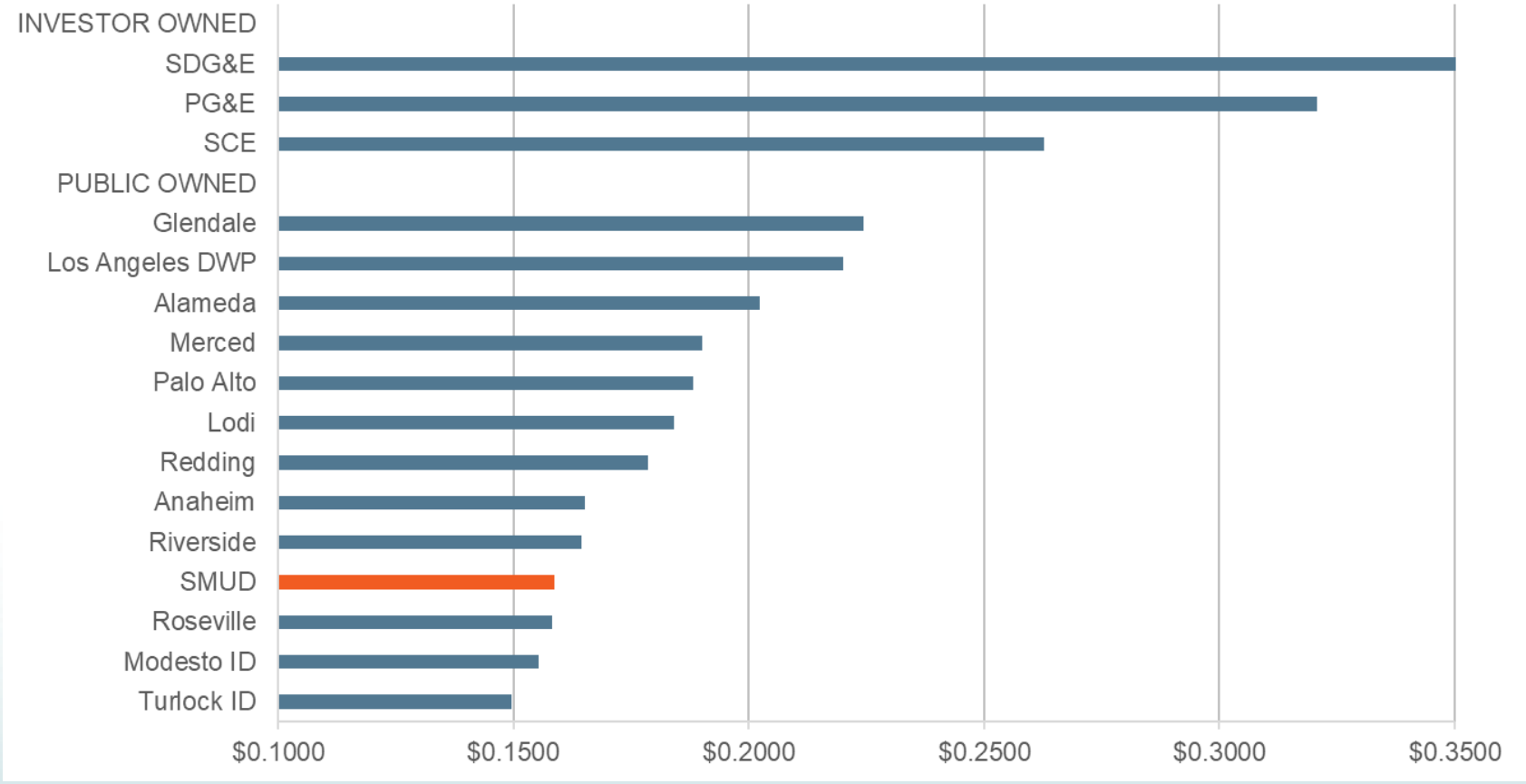
# Public power vs investor-owned





# How our rates compare

## California utilities system average rates (\$/kWh)



Source: EIA 861 2023.

# 2030 Zero Carbon Plan





# Where we're headed



## Repurpose natural gas generation

Replace 2 power plants with renewable and storage resources and retool remaining 3 to minimize emissions.



## Expand proven clean technology

Grow SMUD's renewable and battery storage by 3.5x. Support customer's resources via solar and battery storage.

## Remaining 10%+



## Pilot & scale new technology and business models

Increase education and demand flexibility, spread adoption of customer-owned virtual power plants & invest in grid-scale technology.



## Pursue grants, partnerships and limit rate impacts



## Maximize community benefits

Stay affordable and reliable, improve air quality and overall community health while supporting under-resourced communities.

Goal:



Eliminate CO<sub>2</sub> from SMUD's power supply



Zero carbon by 2030

Create thousands of new regional clean tech jobs

Up to 90% reduction



# Natural gas generation replacement & repurposing plan update



## Country Acres project can replace McClellan and Campbell.

- Once Country Acres is online, parallel availability of thermals will be needed to ensure a reliable transition.



## Cosumnes Power Plant (CPP) retooling project = ~100k MT in GHG reduction.

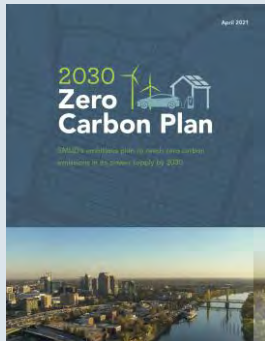
- Reduced output while keeping both gas turbines online.
- Operational flexibility by running CPP at a lower minimum capacity when generation isn't needed.
- Up to ~\$7 million/year savings in fuel.
- Completion date: Q4 2025.





# Progress so far – Utility scale generation projects

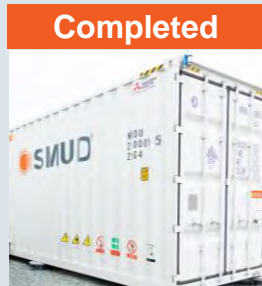
**SMUD  
Board's  
Climate  
Declaration**



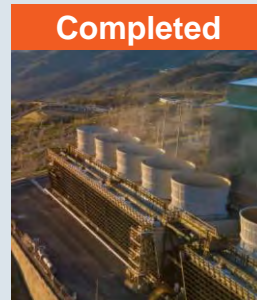
**2030 Zero  
Carbon Plan**



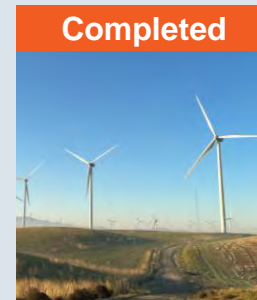
**100 MW:**  
Drew solar



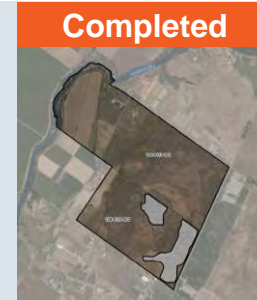
**4 MW:**  
Hedge Lithium-ion  
Battery storage



**100 MW:**  
Calpine Geysers  
geothermal



**85 MW:**  
Solano  
Wind Phase 4



**50 MW:**  
Sloughouse  
solar



**100 MW:**  
Hatchet Ridge  
wind

**ZCP goal: Up  
to ~3,400 MW  
by 2030**



**2020**

**2021**

**2022**

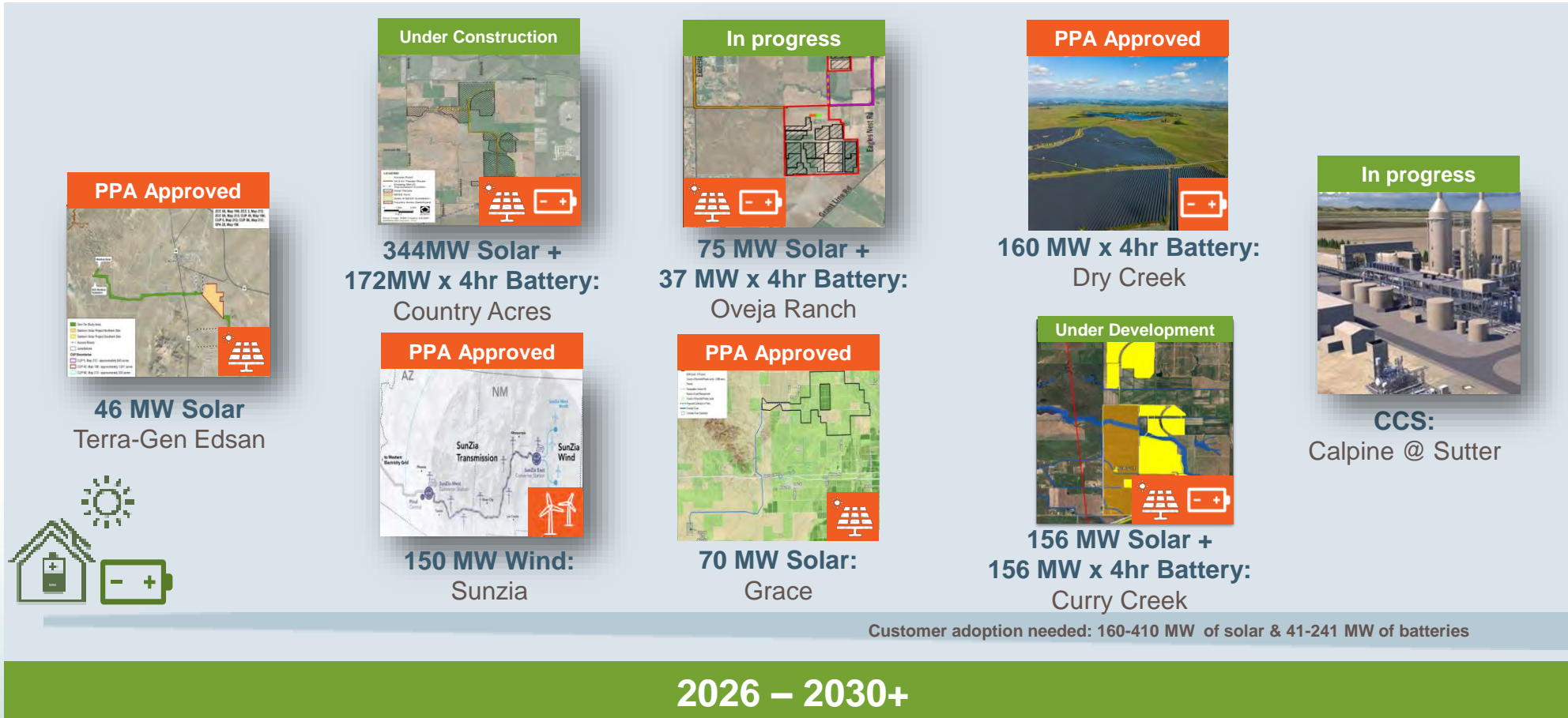
**2023**

**2024**

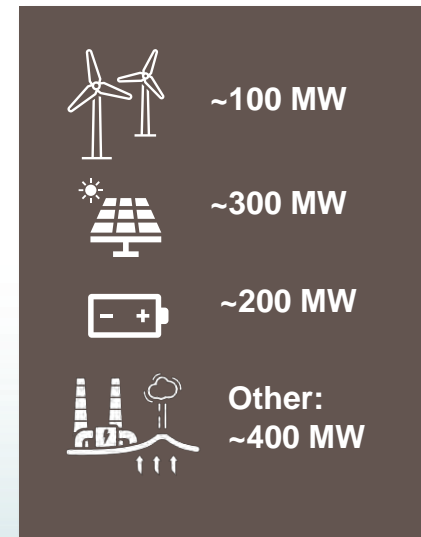
**2025**



# In 5 years - Utility scale generation projects



**Additional  
resources  
under  
evaluation:**



**2026 – 2030+**



# Customer adoption with EVs, solar & storage



by  
2030

**288,000** light-duty  
EVs

**500 – 750 MW**  
Residential &  
commercial solar

**50 – 250 MW**  
Residential &  
commercial storage

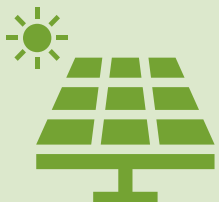
**154,000** All-electric  
equivalent homes

2030  
Goal

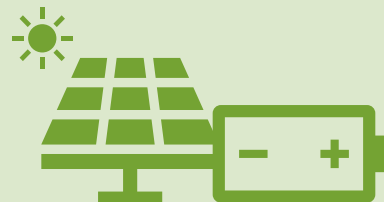
As  
of  
2024



**61,900+**  
light-duty EVs



**59,000+** total  
installs (390+ MW)



**2,200+** total  
installs (14 MW)



**68,800+** all-electric  
equivalent homes

2024





# Rebates & incentives



Heat pump water  
heaters

up to \$3,000



HVAC

up to \$2,500



Battery Storage

up to \$10,000



EV charging

up to \$600



View all residential  
customer incentives

[smud.org/Rebates](https://smud.org/Rebates)



Business customer incentives

[smud.org/MyAdvisor](https://smud.org/MyAdvisor)



Multi-family rebate  
program

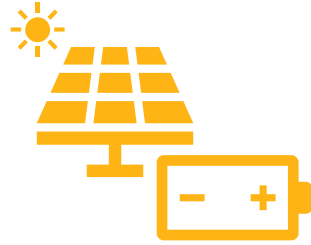


# Participate & save



## MyEnergy Optimizer

- Works with your smart thermostat.
- Shifts energy use out of times when demand is at its highest.
- **\$50** Prepaid Mastercard®, + **\$25** for each summer you participate.



## MyEnergy Optimizer Partner+

- For solar + storage systems.
- reduces energy usage when demand is highest and clean energy resources are scarce.
- One-time enrollment incentive up to **\$10,000** per household + **quarterly incentives** for Tesla.



## Managed EV Charging

- Smart technology to optimize EV charging.
- Ford, GM, BMW & Tesla.
- One-time, initial incentive and a quarterly reward payment.



## Income-qualified offerings

- Bill discounts.
- Medical Discount Rate.
- Billing & financial assistance.
- Free energy audits.
- Customer programs for weatherization & energy-efficiency improvements.



## Significant funding secured

# \$50 million

DOE GRIP Grant for deploying next generation smart meters



## \$25 million

CEC reliability & resilience grant to improve infrastructure on the downtown

## \$337K+

CEC apprenticeship training program

## \$10 million

CEC grant for transportation electrification

## \$250K

DOE reimbursement for hydro power generation

## \$200K

CEC grant for R&D efforts

## \$3 million

Congresswoman Matsui earmark for neighborhood electrification

## \$80K

American Public Power Association grant for workforce development







# Partnerships drive community impact



**Affordability**



**Community  
engagement**



**Equitable  
access**



# Follow along with our progress

Data-driven dashboards

## Energy outlook dashboard



[smud.org/EnergyOutlook](https://smud.org/EnergyOutlook)

## Emission & zero carbon progress dashboard

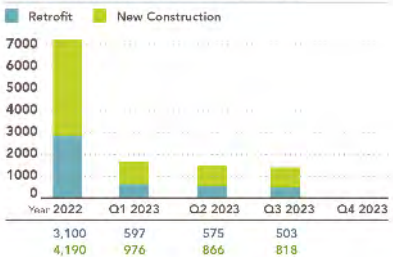
### Quarterly generation and emissions from gas plants

2023 Planned GHG = 2.6 million metric tons

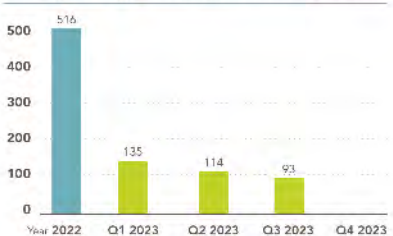


	Q1 2023	Q2 2023	Q3 2023	Q4 2023
Thermal plant contract	153k MT CO2e	33k MT CO2e	175k MT CO2e	--
Cosumnes Power Plant	138k MT CO2e	168k MT CO2e	388k MT CO2e	--
Cogens and peaker plants	208k MT CO2e	103k MT CO2e	169k MT CO2e	--
Total	499k MT CO2e	304k MT CO2e	732k MT CO2e	--

### Solar installations (Residential + commercial)



### Battery storage installations (Residential + commercial)



[smud.org/2030Progress](https://smud.org/2030Progress)

# Wildfire mitigation



# Wildfire Mitigation Plan



Deliver safe, reliable, sustainable and economic electric service.



Minimize the probability that SMUD's transmission & distribution (T&D) system may be the origin or contributing source for the ignition of a wildfire.



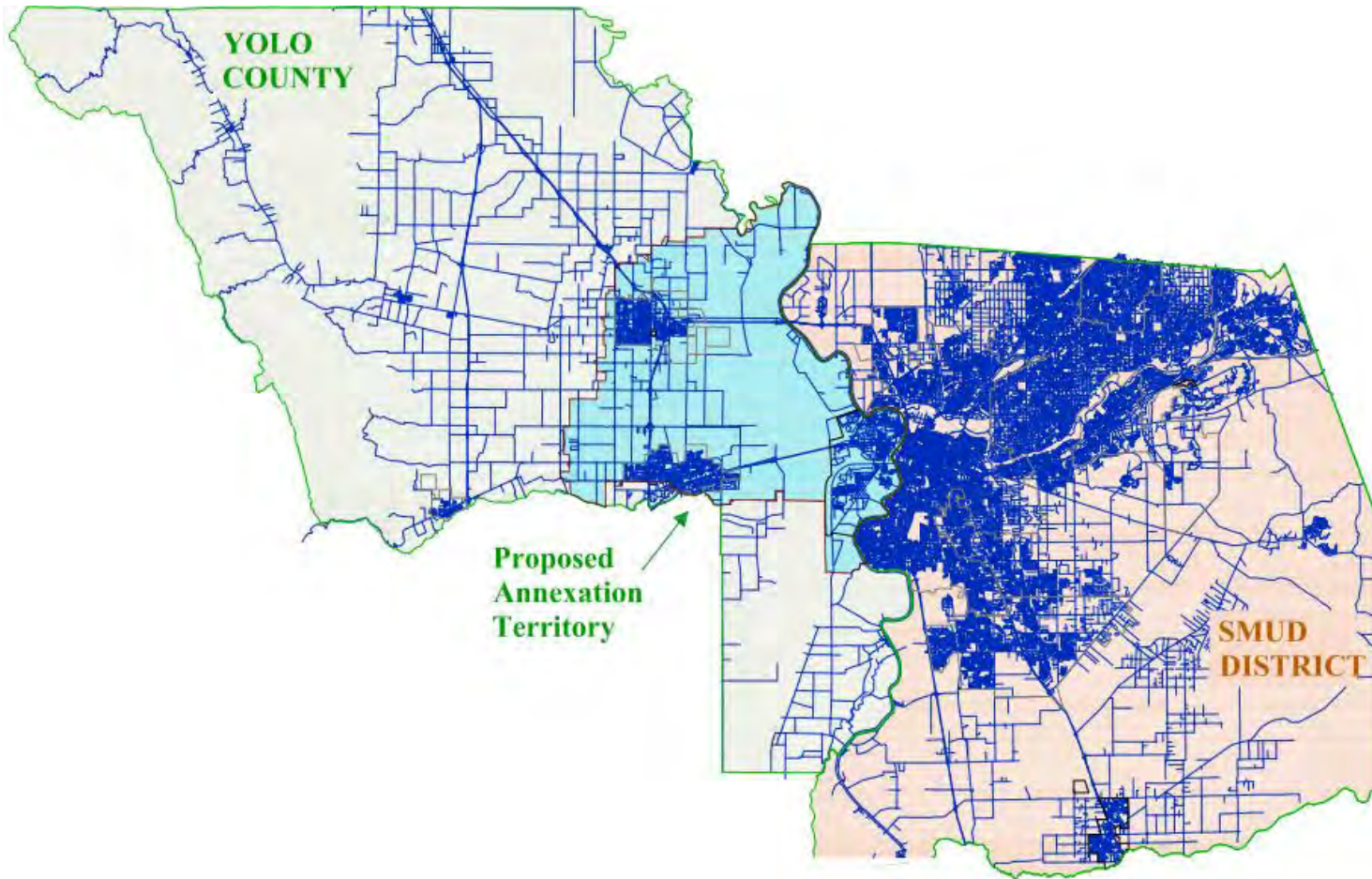
Implement a WMP that embraces safety, prevention, mitigation and recovery as a central priority for SMUD.



Implement a WMP that is consistent with state law and objectives.

**Creating new  
municipalities**

# Yolo County annexation effort: 2003-2006



- Feasibility study projected \$180-254 million in savings over 20 years.
- Existing SMUD customers voted against providing electric service to portions of Yolo County w/ Yolo customers paying full cost of annexation.
- PG&E put \$11 million+ into the anti-annexation campaign.

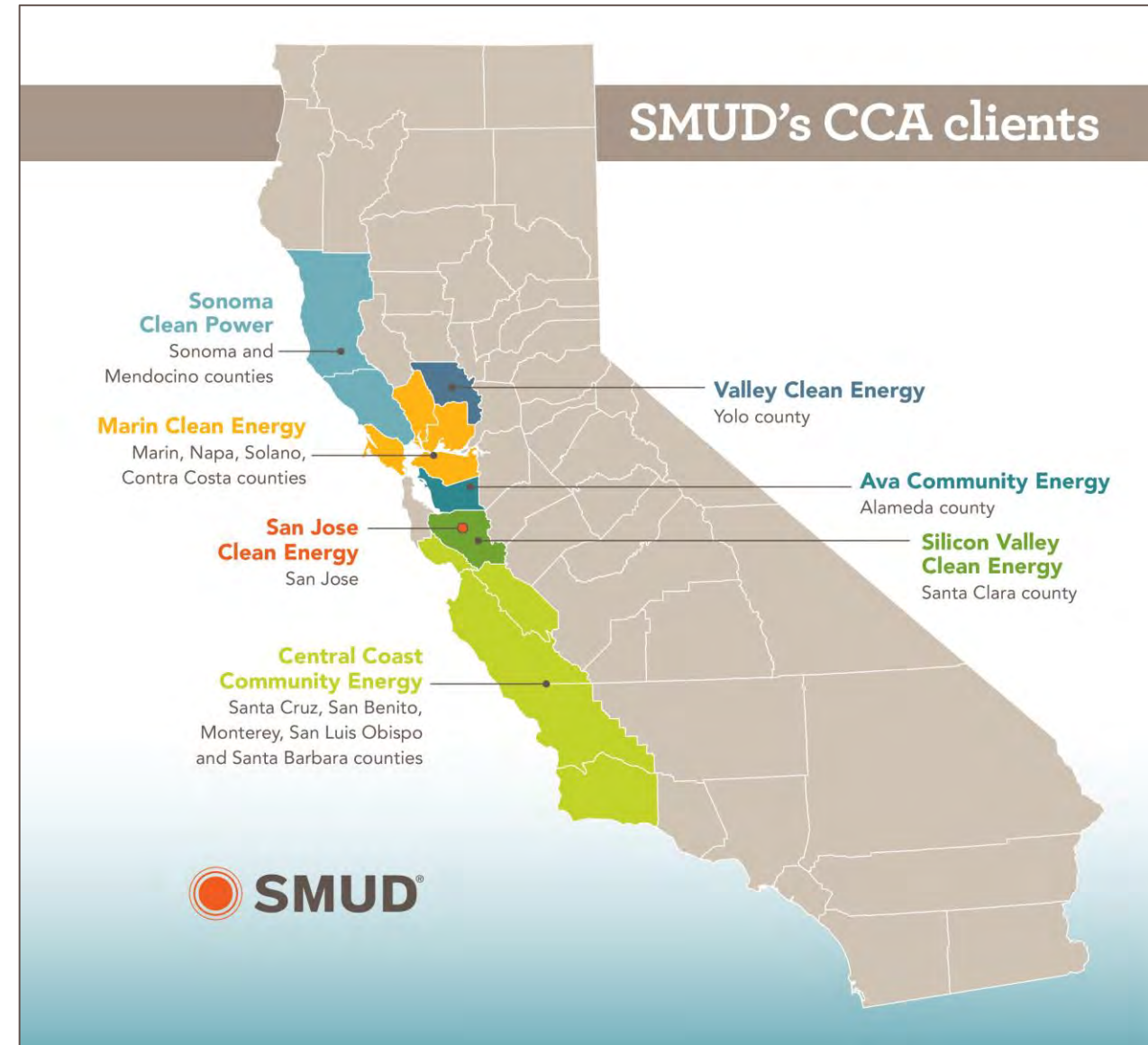


# Community Choice Aggregators (CCAs)

**CCAs:** groups of cities or counties that have joined together to procure power on behalf of their community members - often providing **lower rates and cleaner energy**.

**SMUD works with 7 CCAs** to provide:

- Data management and billing.
- Customer care and operations.
- Engagement and branding.





# CleanPowerCity.org

## Show your support to create a healthier environment & cleaner air:

- Discover rebates & incentives.
- Get **99 tips** on being energy smart and reducing your carbon footprint.
- Find local events to get involved in.
- Check out our Road to Zero blog.
- Join the charge and officially become a Clean PowerCity Champion today!

