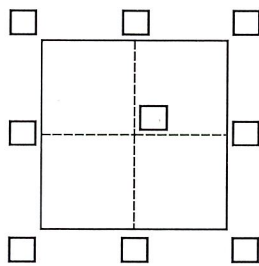


CORNER RECORD

Agency Index COR2024-496Document Number 6415City of Unincorporated County of Sacramento, CaliforniaBrief Legal Description National Geodetic Survey Monument - Station SA 105- NGS PID JS1581**CORNER TYPE**

Government Corner ☐ Control ☒
Meander ☐ Property ☐
Rancho ☐ Other ☐

Date of Survey August 26, 2024**COORDINATES (Optional)**N. E. Elevation 15.6Units Metric ☐ U.S. Survey Foot ☒Horizontal Datum Zone Epoch Date Vertical Datum NGVD 88☐ Complies with Public Resources Code §§8801-8819☐ Complies with Public Resources Code §§8890-8902PLS Act Ref.: ☐ 8765(d) ☒ 8771 ☐ 8773 ☐ Other:

Corner/
Monument: ☐ Left as found ☐ Established ☐ Rebuilt ☒ Pre-Construction
☐ Found and tagged ☐ Reestablished ☒ Referenced ☐ Post-Construction

Narrative of corner identified and monument as found, set, reset, replaced, or removed:

☒ See sheet #2 for description(s):

IT IS THE PURPOSE OF THIS CORNER RECORD TO PERPETUATE THE ESTABLISHED VERTICAL POSITION OF SAID MONUMENT PRE-CONSTRUCTION. THE POSITION HAS BEEN REFERENCED TO THE LOCATION OF SET REFERENCE POINTS AS SHOWN ON SHEET 2

SURVEYOR'S STATEMENT

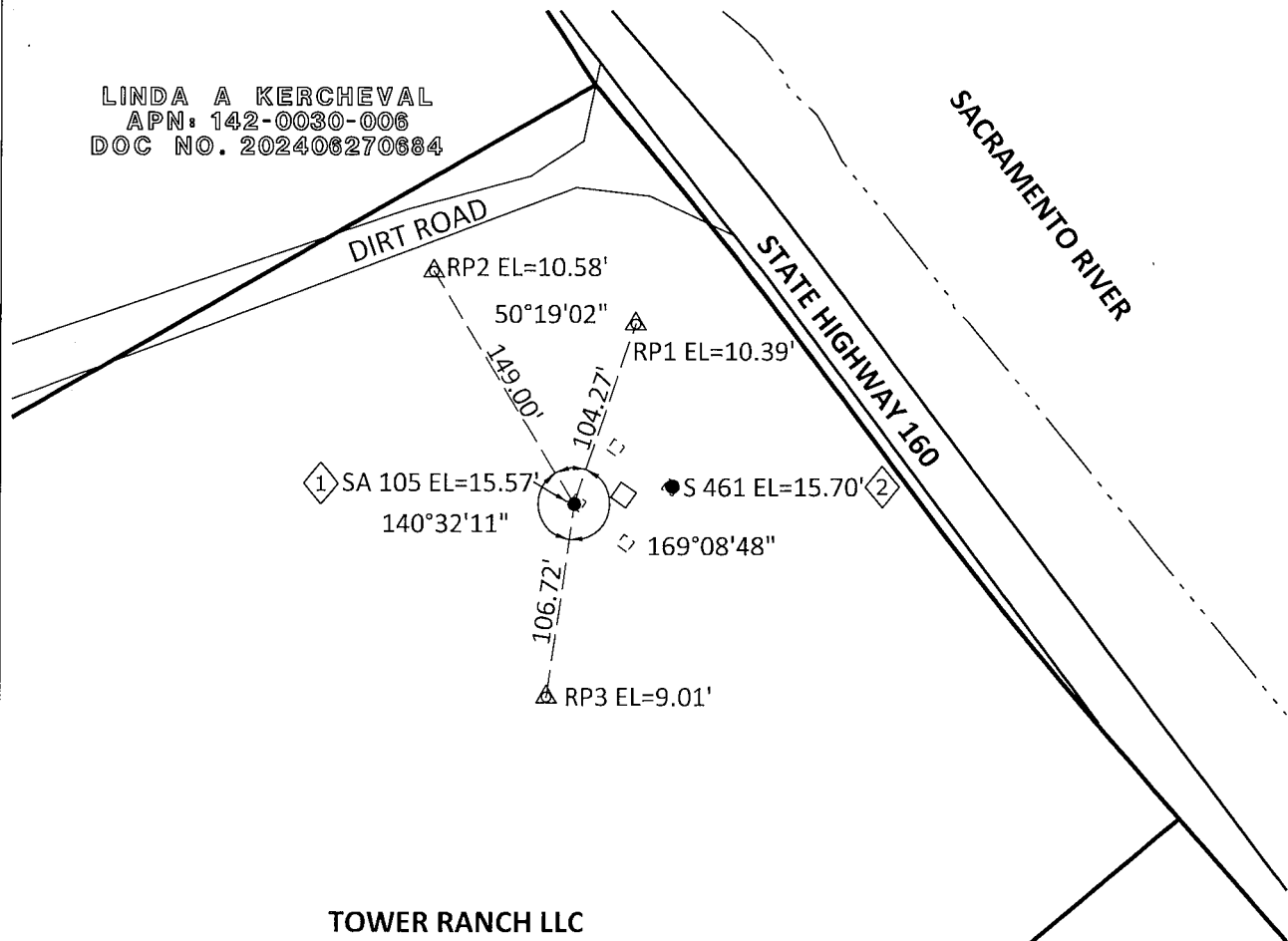
This Corner Record was prepared by me or under my direction in conformance with

the Professional Land Surveyors' Act on October 4, 2024Signed Thomas Marsh P.L.S. or R.C.E. No. 9520**COUNTY SURVEYOR'S STATEMENT**This Corner Record was received 2-18-2025and examined and filed 2-19-2025Signed [Signature] P.L.S. or R.C.E. No. 9275Title Deputy County Surveyor

County Surveyor's Comment



LINDA A KERCHEVAL
APN: 142-0030-006
DOC NO. 2024062706884



TOWER RANCH LLC
APN: 142-0200-007
Book 205 of Parcel Maps at Page 3

ANTHONY SERPA
DEBORAH FERREIRA
APN: 142-0030-033
Book 20020208 OR
Page 1887

LEGEND

- SUBJECT BOUNDARY LINE
- - - RIVER
- CONCRETE FOOTING
- CENTER OF TOWER
- FOUND MONUMENT AS NOTED
- △ SET REBAR & PLASTIC CAP MARKED "PGE CONTROL"

MONUMENT NOTES

- ① - FOUND 3 1/2" BRASS DISC IN CONCRETE STAMPED "SA 105 1952 CORPS OF ENGINEERS-U.S. ARMY SURVEY MARK"
- ② - FOUND 3 1/2" BRASS DISC IN CONCRETE STAMPED "S 461 1950 U.S. COAST & GEODETIC SURVEY BENCHMARK"



NOTE: IT IS THE PURPOSE OF THIS RECORD TO PERPETUATE THE POSITION(S) OF EXISTING MONUMENT(S). NO REPRESENTATION IS MADE TO ANY RELATIVE POSITION(S) OF SAID MONUMENT(S). ALL RIGHT OF WAY, PROPERTY, CENTERLINES AND OTHERS ARE FOR GRAPHICAL REPRESENTATION ONLY.