

# CORNER RECORD

Agency Index

Document Number

County of

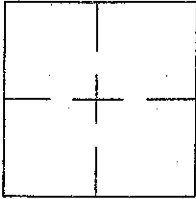
California

City of

Brief Legal Description

## CORNER TYPE

## COORDINATES (Optional)



Government Corner ☐ Control ☐  
Meander ☐ Property ☒  
Rancho ☐ Other ☐

Date of Survey

06-13-2018

N. \_\_\_\_\_ E. \_\_\_\_\_

Elevation \_\_\_\_\_

Units Metric ☐ U.S. Survey Foot ☐

Horizontal Datum \_\_\_\_\_

Zone \_\_\_\_\_ Epoch Date \_\_\_\_\_

Vertical Datum \_\_\_\_\_

☐ Complies with Public Resources Code §§8801-8819☐ Complies with Public Resources Code §§8890-8902PLS Act Ref: ☐ 8765(d)☐ 8771☒ 8773☐ Other:

Corner/  
Monument: ☐ Left as found ☐ Established ☐ Rebuilt  
☐ Found and tagged ☒ Reestablished ☐ Referenced

☐ Pre-Construction  
☐ Post-Construction

Narrative of corner identified and monument as found, set, reset, replaced, or removed:  
☐ See sheet #2 for description(s):

FOUND STANDARD STREET MONUMENT IN CENTER OF STARVIEW AND SKYVIEW DRIVE. FOUND CHISELED X IN CURB AT LOTS FRONTAGE. HELD FOUND SCRIBED X'S AND PARALLELISM TO STANDARD CITY MONUMENTS FOUND IN CENTER OF STARVIEW AND SKYVIEW TO ESTABLISH SIDE AND REAR PARCEL BOUNDARIES. PK NAILS IN CONCRETE WALL SEARCHED FOR AND NOT FOUND. SEE PAGE TWO FOR DETAILS.

## SURVEYOR'S STATEMENT

This Corner Record was prepared by me or under my direction in conformance with

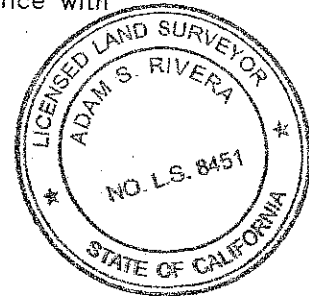
the Professional Land Surveyors' Act on

July 24th, 2018

Signed

P.L.S. or R.C.E. No.

8451



## COUNTY SURVEYOR'S STATEMENT

This Corner Record was received

7/24, 2018

and examined and filed

AUGUST 1, 2018

Signed

P.L.S. or R.C.E. No.

7886

Title

COUNTY SURVEYOR, SONOMA COUNTY

County Surveyor's Comment

SUR18-0131

APN 148-180-006

Starview Dr

City of Santa Rosa



HLS JOB #3404 &amp; 3405

Page 1 of 2

## LEGEND



BOUNDARY LINE

ADJOINING BOUNDARY LINE

SURVEY TIE

SET 1/2" IRON PIPE, TAGGED LS 8451

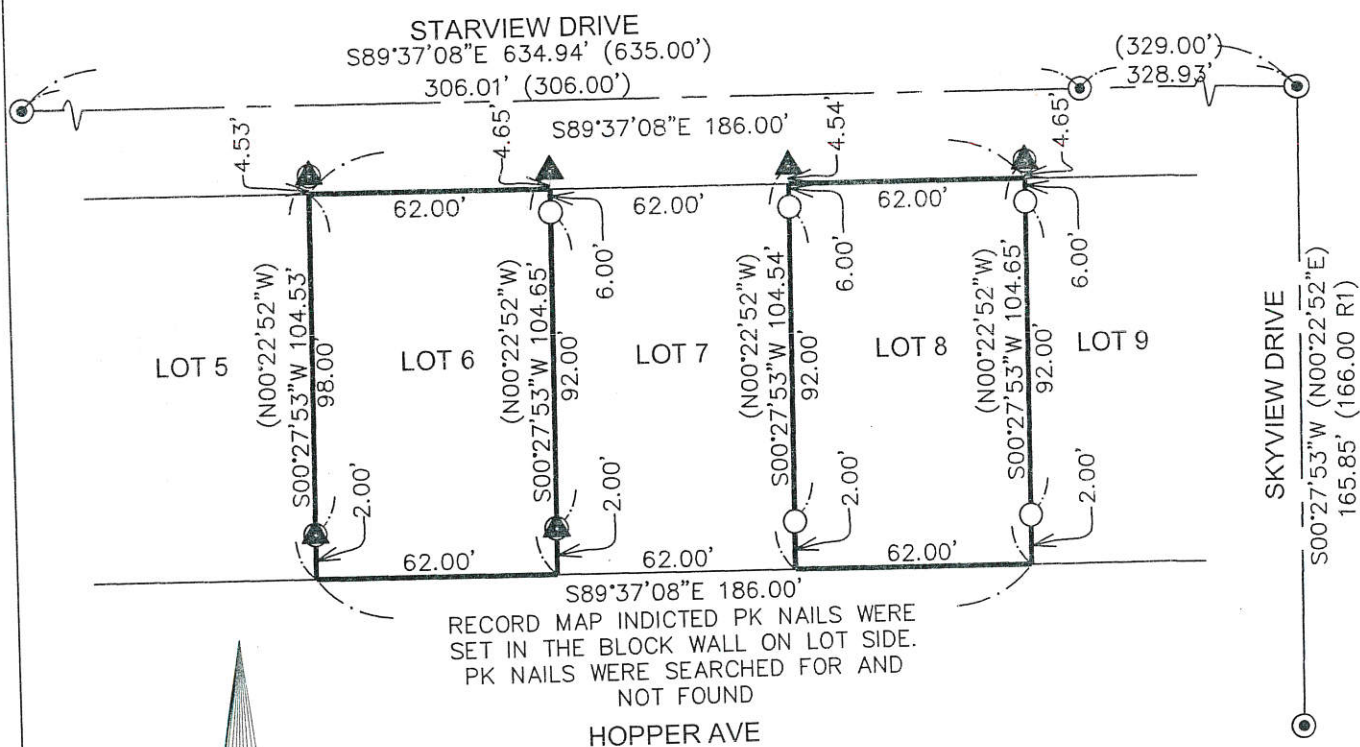
SET 1/2" BRASS DISC AND RIVET IN CONCRETE, TAGGED LS 8451

FOUND 2" BRASS DISC IN MONUMENT WELL

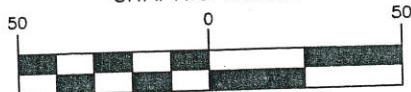
FOUND SCRIBED X IN CONCRETE CURB

RECORDED DATA WHERE DIFFERENT THAN MEASURED

PER UNIT 1 HILLVIEW MANOR SUBDIVISION BOOK 235 MAPS 09-10



GRAPHIC SCALE



( IN FEET )

1 inch = 50 ft.

# CORNER RECORD

Agency Index

CR1501

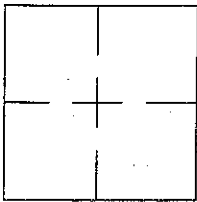
Document Number

City of SANTA ROSA

County of SONOMA

California

Brief Legal Description REC BK. 542 MAPS 34. APN 173-470-007



## CORNER TYPE

Government Corner ☐ Control ☐  
 Meander ☐ Property ☒  
 Rancho ☐ Other ☐

Date of Survey 03-16-2018

## COORDINATES (Optional)

N.                      E.                     

Elevation                     

Units Metric ☐ U.S. Survey Foot ☐

Horizontal Datum                     

Zone                      Epoch Date                     

Vertical Datum                     

☐ Complies with Public Resources Code 8801-8819

☐ Complies with Public Resources Code 8890-8902

PLS Act Ref: ☐ 8765(d) ☐ 8771 ☒ 8773 ☐ Other:                     

Corner/Monument: ☐ Left as found ☐ Established ☐ Rebuilt ☐ Pre-Construction  
☐ Found and tagged ☒ Reestablished ☐ Referenced ☐ Post-Construction

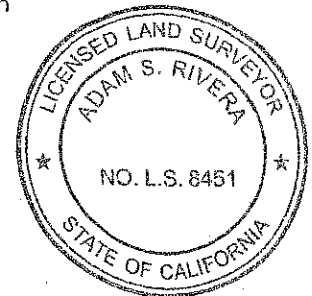
Narrative of corner identified and monument as found, set, reset, replaced, or removed:  
☐ See sheet #2 for description(s):

FOUND FOUR FOUND 3" BRASS DISCS IN MONUMENT WELLS IN GOOD CONDITION AND THREE IRON PIPES IN GOOD CONDITION TAGGED RCE 17211 AS SHOWN ON PARCEL MAP 542 OF MAPS PAGE 34. SEE PAGE TWO FOR DETAILS.

## SURVEYOR'S STATEMENT

This Corner Record was prepared by me or under my direction in conformance with the Professional Land Surveyors' Act on July 24<sup>th</sup> 2018

Signed [Signature] P.L.S. or R.C.E. No. 8451



## COUNTY SURVEYOR'S STATEMENT

This Corner Record was received 7/24, 2018

and examined and filed AUGUST 1, 2018

Signed [Signature] P.L.S. or R.C.E. No. 7886

Title COUNTY SURVEYOR, SONOMA COUNTY

County Surveyor's Comment



SUR18-0096

APN 173-470-007

Sedgemoore Dr  
City of Santa Rosa

BPELSG-2016

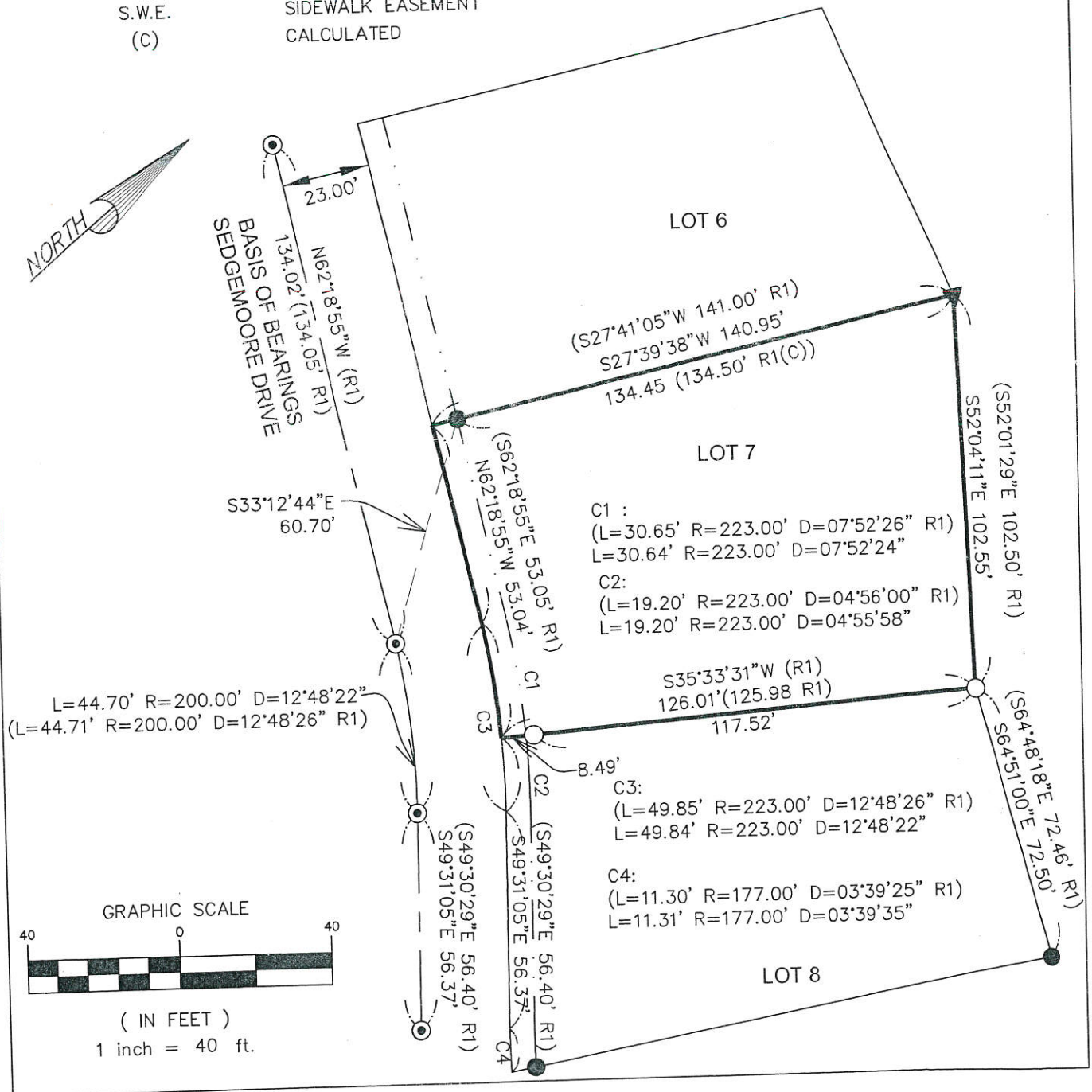
HLS JOB #2964

Page 1 of 2

## LEGEND

- BOUNDARY LINE  
 ADJOINING BOUNDARY LINE  
 EASEMENT LINE  
 SURVEY TIE  
 CENTERLINE

- SET 1/2" IRON PIPE, TAGGED LS 8451  
 FOUND 1/2" IRON PIPE TAGGED 17211.  
 FOUND 3" BRASS DISK IN MONUMENT WELL  
 FOUND NAIL, TAGGED RCE 17211  
 RECORDED DATA, 542 MAPS 32-35  
 P.U.E. PUBLIC UTILITY EASEMENT  
 S.W.E. SIDEWALK EASEMENT  
 (C) CALCULATED



# CORNER RECORD

Agency Index

Document Number

County of

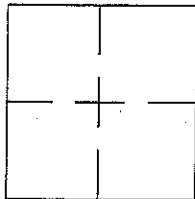
California

City of

Brief Legal Description REC BK. 376, MAPS, 41. APN 173-590-029

## CORNER TYPE

## COORDINATES (Optional)



Government Corner ☐ Control ☐  
Meander ☐ Property ☒  
Rancho ☐ Other ☐

Date of Survey 02-22-2018

N. \_\_\_\_\_ E. \_\_\_\_\_

Elevation \_\_\_\_\_

Units Metric ☐ U.S. Survey Foot ☐

Horizontal Datum \_\_\_\_\_

Zone \_\_\_\_\_ Epoch Date \_\_\_\_\_

Vertical Datum \_\_\_\_\_

☐ Complies with Public Resources Code 8801-8819☐ Complies with Public Resources Code 8890-8902PLS Act Ref: ☐ 8765(d)☐ 8771☒ 8773☐ Other: \_\_\_\_\_Corner/  
Monument:☐ Left as found☐ Established☐ Rebuilt☐ Pre-Construction☐ Found and tagged☒ Reestablished☐ Referenced☐ Post-Construction

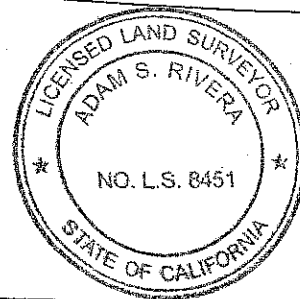
Narrative of corner identified and monument as found, set, reset, replaced, or removed:

☐ See sheet #2 for description(s):

FOUND THREE 1/2" IRON PIPES IN GOOD CONDITION WITH NO TAG AS SHOWN ON RECORD OF SURVEY BOOK  
376 OF MAPS PAGE 41. SEE PAGE TWO FOR DETAILS.

## SURVEYOR'S STATEMENT

This Corner Record was prepared by me or under my direction in conformance with  
the Professional Land Surveyors' Act on July 29th, 2018

Signed [Signature] P.L.S. or R.C.E. No. 8451

## COUNTY SURVEYOR'S STATEMENT

This Corner Record was received 7/24, 2018and examined and filed AUGUST 1, 2018Signed [Signature] P.L.S. or R.C.E. No. 7886Title COUNTY SURVEYOR, SONOMA COUNTY

County Surveyor's Comment

SUR18-0097

APN 173-590-029

Long Leaf Court

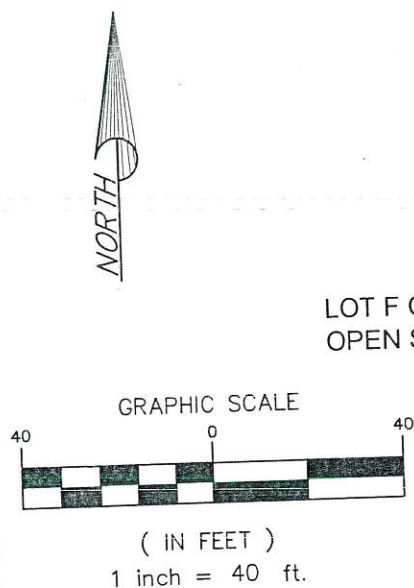
City of Santa Rosa



HLS JOB #3167

Page 1 of 2





LOT F COMMON  
OPEN SPACE

LOT 29

LOT 30

LOT 28

6' S.W.E & P.U.E  
376 MAPS 41

10' P.U.E 376  
MAPS 41

(L= 43.10' R= 51.00' D=48°25'00" R1)  
L= 43.19' R= 51.00' D=48°31'24"

N74°45'18"E  
51.00' (R1)(C)

(S72°42'56"W 116.50' R1)  
S74°45'18"W 116.35'  
167.35' (167.50' R1)(C)

LEGEND

- BOUNDARY LINE
- EASEMENT LINE
- ADJOINING BOUNDARY LINE
- SURVEY TIE
- CENTERLINE
- SET 1/2" TAG IN CURB, TAGGED LS 8451
- FOUND 1/2" IRON PIPE NOT TAGGED
- FOUND 2" BRASS DISK IN MONUMENT WELL
- (R1) RECORDED DATA, 376 MAPS 41
- S.W.E SIDEWALK EASEMENT
- P.U.E PUBLIC UTILITY EASEMENT
- (C) CALCULATED

LONG LEAF COURT

BASIS OF BEARINGS  
S58°11'09"E 160.39'

(L= 169.93' R= 145.00' D=67°08'43" R1)  
L= 169.94' R= 145.00' D=67°08'43" R1)

# CORNER RECORD

Agency Index

Document Number

County of SONOMA

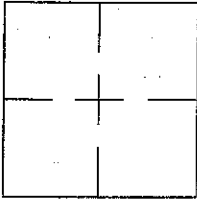
California

City of SANTA ROSA

Brief Legal Description LOT 12 OF FOUNTAINGROVE II EAST, UNIT NO.'S 6 AND 8, SHOWN IN BOOK 567 OF MAPS AT PAGE 39 OF SONOMA COUNTY RECORDS APN 173-480-012

CORNER TYPE

COORDINATES (Optional)



Government Corner ☐ Control ☐  
Meander ☐ Property ☒  
Rancho ☐ Other ☐

N. \_\_\_\_\_ E. \_\_\_\_\_

Elevation \_\_\_\_\_

Units Metric ☐ U.S. Survey Foot ☐

Horizontal Datum \_\_\_\_\_

Zone \_\_\_\_\_ Epoch Date \_\_\_\_\_

Vertical Datum \_\_\_\_\_

☐ Complies with Public Resources Code 8801-8819

☐ Complies with Public Resources Code 8890-8902

Date of Survey 05-24-2018

PLS Act Ref: ☐ 8765(d) ☐ 8771 ☒ 8773 ☐ Other: \_\_\_\_\_

Corner/Monument: ☐ Left as found ☐ Established ☐ Rebuilt ☐ Pre-Construction  
☐ Found and tagged ☒ Reestablished ☐ Referenced ☐ Post-Construction

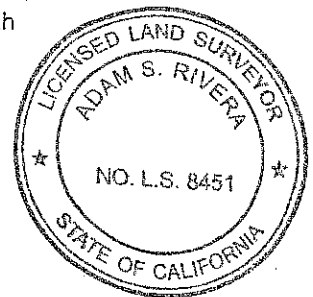
Narrative of corner identified and monument as found, set, reset, replaced, or removed:  
☐ See sheet #2 for description(s):

FOUND THREE 1/2" IRON PIPES IN GOOD CONDITION WITH NO TAG AND TWO 3" BRASS DISKS IN CENTERLINE MONUMENT WELLS AS SHOWN ON PARCEL MAP FILED IN BOOK 567 OF MAPS AT PAGE 33-45. SET ONE 1/2" IRON PIPE TAGGED LS 8451 RIVERA. SEE PAGE TWO FOR DETAILS.

## SURVEYOR'S STATEMENT

This Corner Record was prepared by me or under my direction in conformance with the Professional Land Surveyors' Act on July 24th, 2018

Signed [Signature] P.L.S. or R.C.E. No. 8451



## COUNTY SURVEYOR'S STATEMENT

This Corner Record was received 7/24, 2018

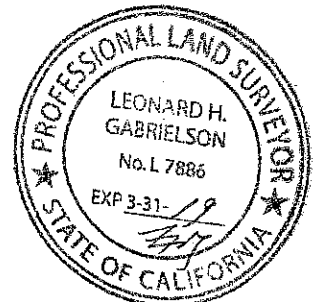
and examined and filed AUGUST 1, 2018

Signed [Signature] P.L.S. or R.C.E. No. 7886

Title COUNTY SURVEYOR, SONOMA COUNTY

County Surveyor's Comment

SR18-0110  
APN 173-480-012  
Milbrook Dr  
City of Santa Rosa



HLS JOB #3375

Page 1 of 2

## LEGEND

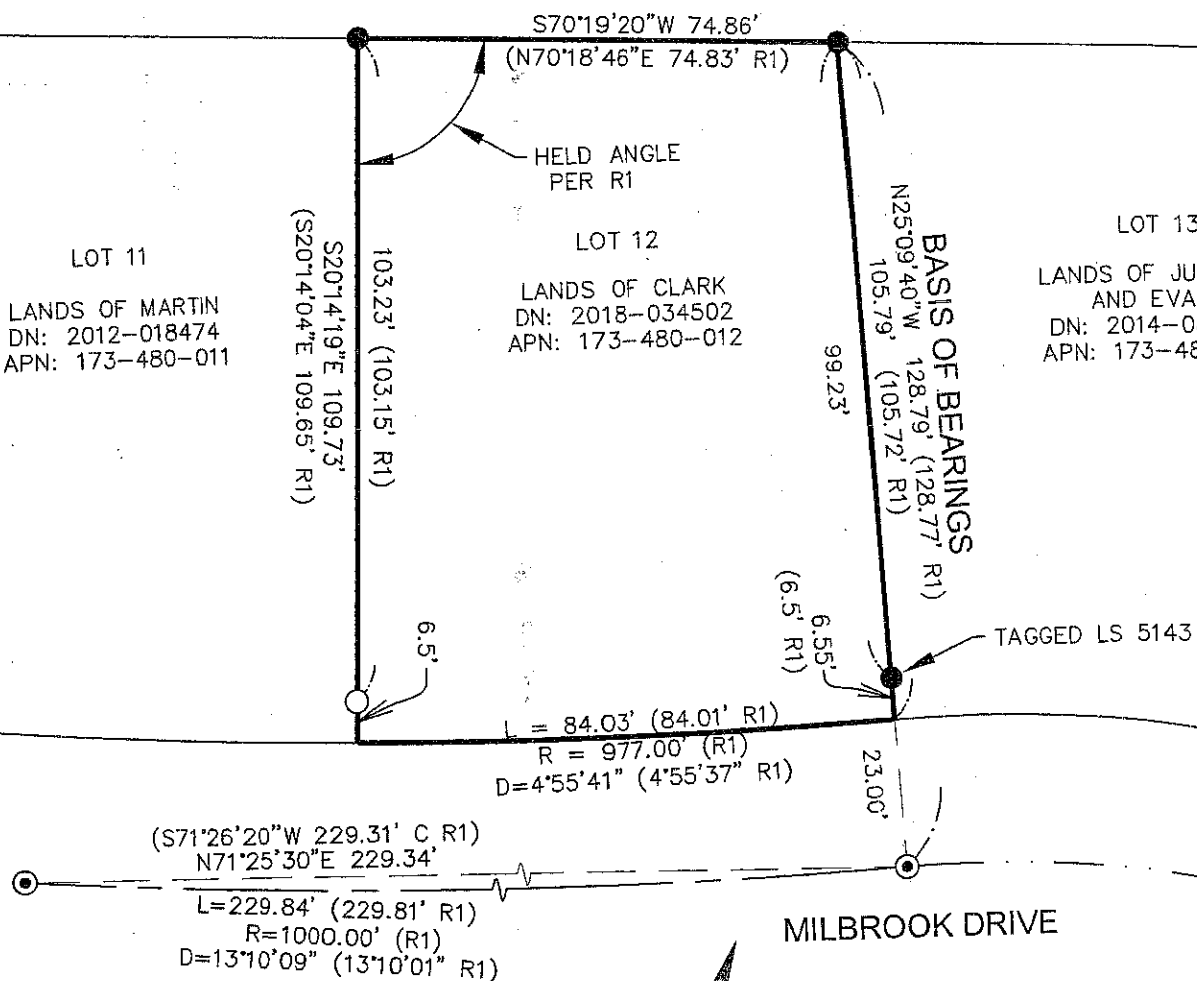
	BOUNDARY LINE
	ADJOINING BOUNDARY LINE
	SURVEY TIE
	CENTERLINE
	SET 1/2" IRON PIPE, TAGGED LS 8451
	FOUND 1/2" IRON PIPE NO TAG, EXCEPT AS NOTED
	FOUND 3" BRASS DISK IN MONUMENT WELL
	CALCULATED
(R1)	RECORDED DATA (PARCEL MAP BOOK 567 OF MAPS, PAGE 39)

PARCEL E  
LANDS OF FOUNTAINGROVE II OPEN SPACE  
MAINTENANCE ASSOCIATION  
DN: 1998-105359  
APN: 173-480-060

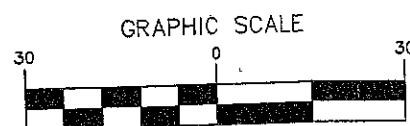
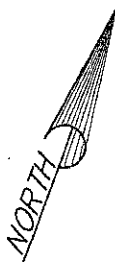
LOT 11  
LANDS OF MARTIN  
DN: 2012-018474  
APN: 173-480-011

LOT 12  
LANDS OF CLARK  
DN: 2018-034502  
APN: 173-480-012

LOT 13  
LANDS OF JUDEVINE  
AND EVANS  
DN: 2014-083892  
APN: 173-480-013



MILBROOK DRIVE



( IN FEET )  
1 inch = 30 ft.



# CORNER RECORD

Agency Index

CR1504

Document Number

City of UNINCORPORATED AREA

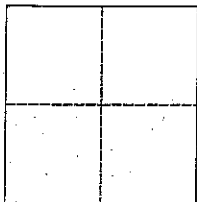
County of SONOMA

California

Brief Legal Description LOT 6, BLOCK 2, HIDDEN HILLS ESTATES No. 3, 139 MAPS 3-6, SONOMA COUNTY RECORDS

## CORNER TYPE

## COORDINATES (Optional)

Government Corner ☐ ControlMeander ☐ PropertyRancho ☐ Other

Date of Survey JULY 12, 2018

N. \_\_\_\_\_ E. \_\_\_\_\_

Elevation

☒ Units Metric ☐ U.S. Survey Foot ☐☐ Horizontal Datum

Zone \_\_\_\_\_ Epoch Date \_\_\_\_\_

Vertical Datum

☐ Complies with Public Resources Code §§8801-8819☐ Complies with Public Resources Code §§8890-8902

PLS Act Ref.:

☒ 8765(d)☐ 8771☐ 8773☐ Other:Corner/  
Monument:☐ Left as found☐ Established☐ Rebuilt☐ Pre-Construction☐ Found and tagged☒ Reestablished☐ Referenced☐ Post-Construction

Narrative of corner identified and monument as found, set, reset, replaced, or removed:

☐ See sheet #2 for description(s):HELD RECORD BEARINGS AND DISTANCES FROM FOUND AND ACCEPTED MONUMENTS AS SHOWN ON THE MAP OF  
HIDDEN HILLS ESTATES No. 3, 139 MAPS 3-6 SONOMA COUNTY RECORDS.

SET ADDITIONAL POINTS ON PROPERTY LINES, ALL AS SHOWN IN SHEET 2

## SURVEYOR'S STATEMENT

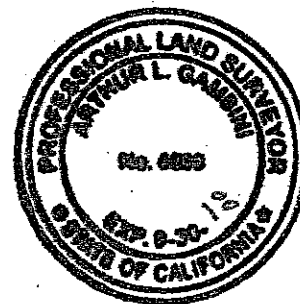
This Corner Record was prepared by me or under my direction in conformance with

the Professional Land Surveyors' Act on

Aug. 08, 2018

Signed

P.L.S. or R.C.E. No. 4869



## COUNTY SURVEYOR'S STATEMENT

This Corner Record was received

August 8, 2018

and examined and filed

August 9, 2018

Signed

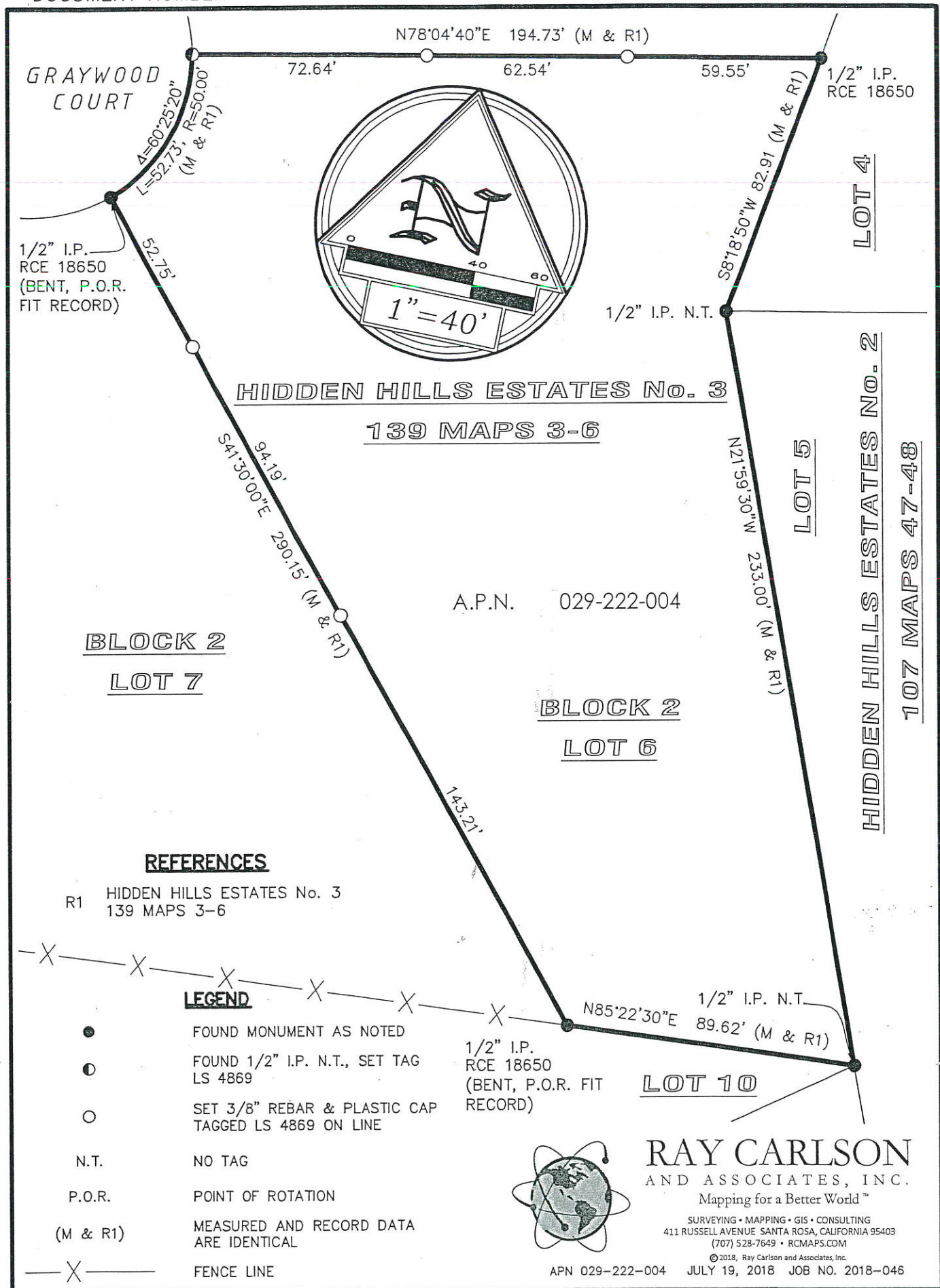
P.L.S. or R.C.E. No. 7886

Title

County Surveyor, Sonoma County

County Surveyor's Comment

GRAYWOOD COURT  
SUR 18-0140  
APN: 029-222-004  
SEC 36, T8N, R8W, E21



# CORNER RECORD

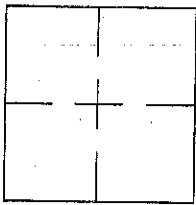
Agency Index

Document Number

County of

City of SANTA ROSA

Brief Legal Description: LOT 8 AS SHOWN IN COFFEY PARK UNIT 1 SUBDIVISION FILED IN BOOK 386 PAGES 35-38 OF MAPS.



## CORNER TYPE

Government Corner ☐ Control ☐  
Meander ☐ Property ☒  
Rancho ☐ Other ☐

Date of Survey 07-26-2018

## COORDINATES (Optional)

N. \_\_\_\_\_ E. \_\_\_\_\_  
Elevation \_\_\_\_\_  
Units Metric ☐ U.S. Survey Foot ☒  
Horizontal Datum \_\_\_\_\_  
Zone \_\_\_\_\_ Epoch Date \_\_\_\_\_  
Vertical Datum \_\_\_\_\_

☐ Complies with Public Resources Code §§8801-8819  
☐ Complies with Public Resources Code §§8890-8902

PLS Act Ref: ☐ 8766 )☐ 8771☒ 8773☐ Other:Corner/ ☐ Left as found☐ Established☐ Rebuilt☐ Pre-Construction

Monument:

☐ Found and tagged☒ Reestablished☐ Referenced☐ Post-Construction

Narrative of corner identified and monument as found, set, reset, replaced, or removed:

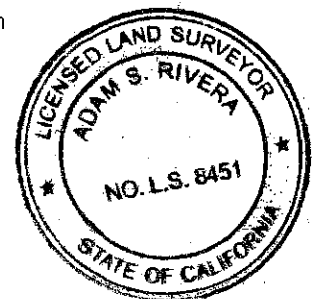
☐ See sheet #2 for description

FOUND 2" BRASS DISKS IN CENTER OF HILLARY COURT IN GOOD CONDITION WITH AS SHOWN ON COFFEY  
PARK UNIT 1 SUBDIVISION FILED IN BOOK OF MAPS 386 PAGES 35-38. SOUTHWEST CORNER OF LOT 8 IS  
PRORATED POSITION BETWEEN NORTHWEST CORNER OF LOT 8 AND SOUTHWEST CORNER OF LOT 7. SET 1/2"  
IRON PIPES TAGGED LS 8451 RIVERA AT 3' OFF SET FROM NORTHWEST AND SOUTHWEST CORNERS OF LOT 8.  
SEE PAGE TWO FOR DETAILS.

## SURVEYOR'S STATEMENT

This Corner Record was prepared by me or under my direction in conformance with

the Professional Land Surveyors' Act on 8/7, 2018

Signed [Signature] P.L.S. or P.C.E. No. 8451

## COUNTY SURVEYOR'S STATEMENT

This Corner Record was received August 8, 2018

and examined and filed August 9, 2018

Signed [Signature] P.L.S. or P.C.E. No. 7886

Title COUNTY SURVEYOR, SONOMA COUNTY

County Surveyor's Comment

Hillary Court

SUR 18-0170

APN: 034-380-008

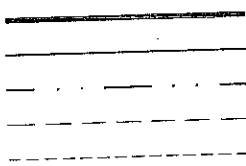
SEC 4, T8N, R8W, A27



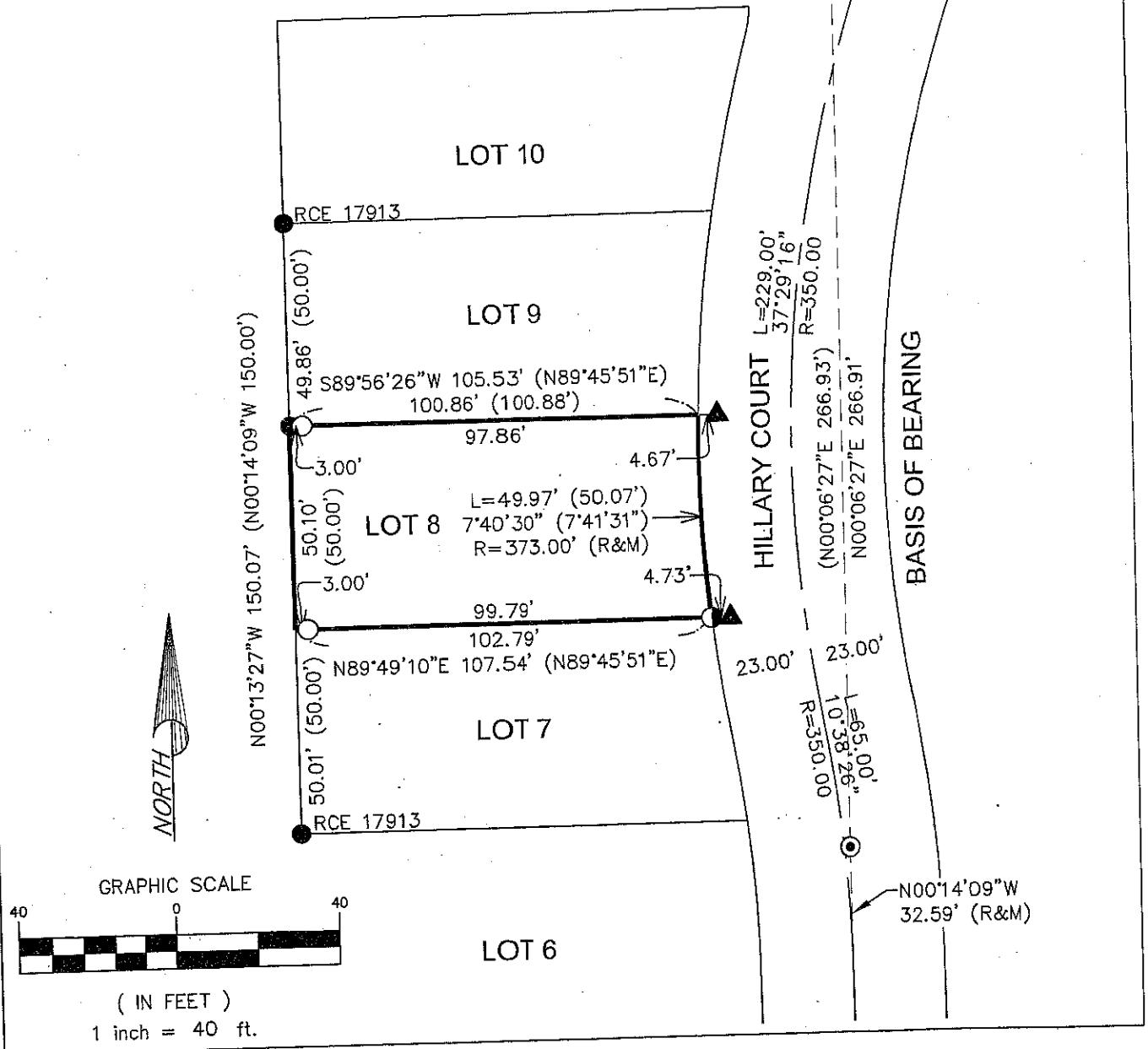
HLS JOB #3473

Page 1 of 2

LEGEND



- BOUNDARY LINE
- ADJOINING BOUNDARY LINE
- EASEMENT LINE
- SURVEY TIE
- ANCIENT BOUNDARY LINE
- SET 1/2" IRON PIPE, TAGGED LS 8451
- FOUND 1/2" IRON PIPE NO TAG, EXCEPT AS NOTED
- FOUND 3/4" IRON PIPE, TAGGED RCE 23681
- FOUND 2" BRASS DISK IN MONUMENT WELL
- FOUND SLASH IN CURB
- RECORDED DATA

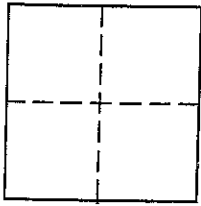


# CORNER RECORD

Agency Index

Document Number

CR 1506

City of RIO NIDOCounty of SONOMA, CaliforniaBrief Legal Description LOT 18, DIVISION 3, 19 MAPS 19, SONOMA COUNTY RECORDS

## CORNER TYPE

Government Corner ☐ Control  
Meander ☒ Property  
Rancho ☐ Other

Date of Survey 07/02/2018

## COORDINATES (Optional)

N. \_\_\_\_\_ E. \_\_\_\_\_

☐ Elevation \_\_\_\_\_☐ Units Metric ☐ U.S. Survey Foot ☐☐ Horizontal Datum \_\_\_\_\_

Zone \_\_\_\_\_ Epoch Date \_\_\_\_\_

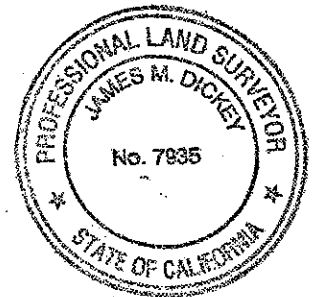
Vertical Datum \_\_\_\_\_

☐ Complies with Public Resources Code §§8801-8819☐ Complies with Public Resources Code §§8890-8902PLS Act Ref: ☒ 8765(d)☐ 8771☐ 8773☐ Other: \_\_\_\_\_Corner/  
Monument: ☐ Left as found☐ Established☐ Rebuilt☐ Pre-Construction☐ Found and tagged ☐ Reestablished☐ Referenced☐ Post-ConstructionNarrative of corner identified and monument as found, set, reset, replaced, or removed:  
☐ See sheet #2 for description (s):

SET THE SOUTHWEST CORNER OF LOT 17 OF EAGLE NEST NO. 2, (19 MAPS 19 S.C.R.) BASED  
ON THE LOCATION SHOWN ON THE RECORD OF SURVEY FILED IN BOOK 669 OF MAPS, PAGE 15,  
SONOMA COUNTY RECORDS.

## SURVEYOR'S STATEMENT

This Corner Record was prepared by me or under my direction in conformance with  
the Professional Land Surveyors' Act on 07/13/2018

Signed [Signature] P.L.S. or R.C.E. No. 7935

## COUNTY SURVEYOR'S STATEMENT

This Corner Record was received JULY 26, 2018and examined and filed AUGUST 8, 2018Signed [Signature] P.L.S. or R.C.E. No. 7886Title COUNTY SURVEYOR, SONOMA COUNTYCounty Surveyor's Comment APN: 070-230-071SUR 18-0151Canyon Three RdSEC 21, T8N, R10W, E19

19

18

LANDS OF  
OROZCO  
070-230-071  
DN 1984-83124  
LOT 18

FOUND 1/2" IRON PIPE  
TAGGED LS6149 PER R1

S36°25'32"E 50.27'  
M&R1

HELD  
ANGLE

CANYON

THREE

ROAD

S18°16'22"E 42.22'  
M&R1

FOUND IRON PIPE NO TAG

LANDS OF  
FOSSUM  
070-230-072  
DN 1988-63012  
LOT 17

17

LANDS OF  
NESS  
070-230-073  
DN 1996-067102  
LOT 16

16

SET 1/2" IRON PIPE  
TAGGED PLS 7935

## LEGEND

- SET 1/2" IRON PIPE TAGGED PLS 7935
- FOUND 1/2" IRON PIPE TAGGED PLS 6149 PER R1 OR AS NOTED

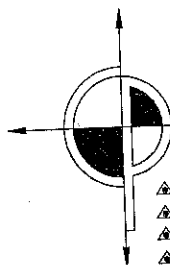
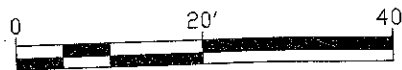
## NOTES

ALL BEARINGS AND DISTANCES SHOWN ARE  
MEASURED AND RECORD

## REFERENCES

R1 RECORD OF SURVEY, 669 MAPS 15 S.C.R.

Y:\8181\Cad\8181-Corner Record.dwg



**CINQUINI & PASSARINO, INC.**  
**LAND SURVEYING**

- ▲ BOUNDARY
- ▲ TOPOGRAPHIC
- ▲ CONSTRUCTION
- ▲ SUBDIVISIONS

1360 No. Dutton Ave.  
Santa Rosa, Ca. 95401  
Phone: (707) 542-6268  
Fax: (707) 542-2106

WWW.CINQUINIPASSARINO.COM



# CORNER RECORD

Agency Index

Document Number

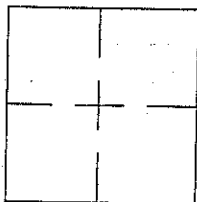
County of

California

City of SANTA ROSA

Brief Legal Description LOT 50 AS SHOWN IN 400 MAPS 39-41. APN: 034-431-050.

CR1507



## CORNER TYPE

Government Corner ☐ Control ☐  
Meander ☐ Property ☒  
Rancho ☐ Other ☐

Date of Survey 03-23-2018

## COORDINATES (Optional)

N.                      E.                     

Elevation                     

Units Metric ☐ U.S. Survey Foot ☐

Horizontal Datum                     

Zone                      Epoch Date                     

Vertical Datum                     

☐ Complies with Public Resources §§ Code 8801-8819

☐ Complies with Public Resources §§ Code 8890-8902

PLS Act Ref: ☐ 8765(d)

☐ 8771

☒ 8773

☐ Other:

Corner/  
Monument: ☐ Left as found

☐ Established

☐ Rebuilt

☐ Pre-Construction

☐ Found and tagged

☒ Reestablished

☐ Referenced

☐ Post-Construction

Narrative of corner identified and monument as found, set, reset, replaced, or removed:  
☒ See sheet #2 for description(s):

FOUND BRASS DISK MONUMENTS IN THE INTERSECTION OF HOPPER AND RANDON WAY AND THE CENTER OF HOPPER AVENUE. HELD PARALLELISM FROM FOUND 1/2" IRON PIPES IN THE NORTHWEST AND SOUTHWEST CORNER OF LOT 50 AS SHOWN ON PARCEL MAP ENTITLED "COFFEY PARK UNIT 5" FILED IN BOOK 400 OF MAPS AT PAGES 39-41, SONOMA COUNTY RECORDS. SET 1/2" BRASS DISKS IN CURB AT EXTENSION OF NORTHERLY AND SOUTHERLY BOUNDARIES OF SAID LOT 50. TAGGED LS 8451 RIVERA.

## SURVEYOR'S STATEMENT

This Corner Record was prepared by me or under my direction in conformance with the Professional Land Surveyors' Act on 8/7/2018

Signed [Signature] P.L.S. or R.C.E. No. 8451



## COUNTY SURVEYOR'S STATEMENT

This Corner Record was received August 8, 2018

and examined and filed AUGUST 9, 2018

Signed [Signature] P.L.S. or R.C.E. No. 7886

Title COUNTY SURVEYOR, SONOMA COUNTY

County Surveyor's Comment

RANDON WAY  
318-0150

APN: 034-431-050










SEC 4, T7N, R8W, B26



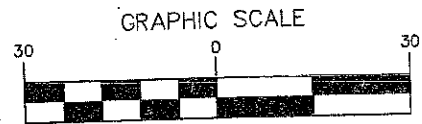
HLS JOB #3251

Page 1 of 2

LEGEND

-  BOUNDARY LINE
-  ADJOINING BOUNDARY LINE
-  CENTER LINE
-  SURVEY TIE
-  FOUND 1/2" IRON PIPE NO TAG, OR AS NOTED
-  FOUND 3" BRASS DISK IN MONUMENT WELL
-  SET 1/2" BRASS TAG IN CURB LS-8451
-  MEASURED AT POINT OF ROTATION
-  RECORDED DATA

POR  
(R)



( IN FEET )  
1 inch = 30 ft.

HOPPER AVENUE  
BASIS OF BEARING  
S55°59'14"W  
155.04'

RANDON WAY  
N34°00'26"W 190.21'  
(N34°00'46"W 190.37' R)

RADIAL: N56°02'55"E

$\Delta=55^{\circ}10'23''$  L=192.59'  
R=200.00'  
( $\Delta=55^{\circ}07'32''$  L=192.42'  
R=200.00' R)

LOT 51

S55°59'14"W 109.81'  
105.03' (105.00' R)

( $\Delta=12^{\circ}57'52''$  L=50.46' R)  
 $\Delta=12^{\circ}57'46''$  L=50.45' R=223.00'

LOT 50

111.04' (110.94' R)  
S55°59'14"W 115.92'

LOT 49

BARNES ROAD  
S33°54'37"E 50.00'  
(S34°00'46"E 50.00' R)

TAGGED  
LS 5326

# CORNER RECORD

Agency Index

CR1508

Document Number

City of Sonoma

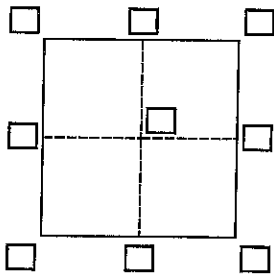
County of

Sonoma

, California

Brief Legal Description

APN 056-201-101



## CORNER TYPE

Government Corner

☐

Control

☐

N.

E.

Meander

☐

Property

☒

Elevation

Rancho

☐

Other

☐

Horizontal Datum

Metric

☐

U.S. Survey Foot

☒

Date of Survey

April 10, 2017

Zone

Epoch Date

Vertical Datum

☐

Complies with Public Resources Code §§8801-8819

☐

Complies with Public Resources Code §§8890-8902

PLS Act Ref.:

☒

8765(d)

☐

8771

☐

8773

☐

Other:

Corner/  
Monument:☐

Left as found

☐

Established

☐

Rebuilt

☐

Pre-Construction

☐

Found and tagged

☒

Reestablished

☐

Referenced

☐

Post-Construction

Narrative of corner identified and monument as found, set, reset, replaced, or removed:

☒ See sheet #2 for description(s):

A found 3/4" iron pipe tagged LS 3770 and 1/2" iron pipe tagged LS 7237 were used to reestablish the position of points that were not set, or destroyed during construction, for the former lands of Vailetti Family Trust, D.N. 2013-114048, as shown on the Record of Survey filed in Book 770 of Maps at Pages 13 & 14, Sonoma County Records.

## SURVEYOR'S STATEMENT

This Corner Record was prepared by me or under my direction in conformance with

the Professional Land Surveyors' Act on July 23, 2018

Signed

P.L.S. or R.C.E. No.

7237



## COUNTY SURVEYOR'S STATEMENT

This Corner Record was received

JULY 26, 2018

and examined and filed

AUGUST 8, 2018

Signed

P.L.S. or R.C.E. No.

7886

Title

COUNTY SURVEYOR, SONOMA COUNTY



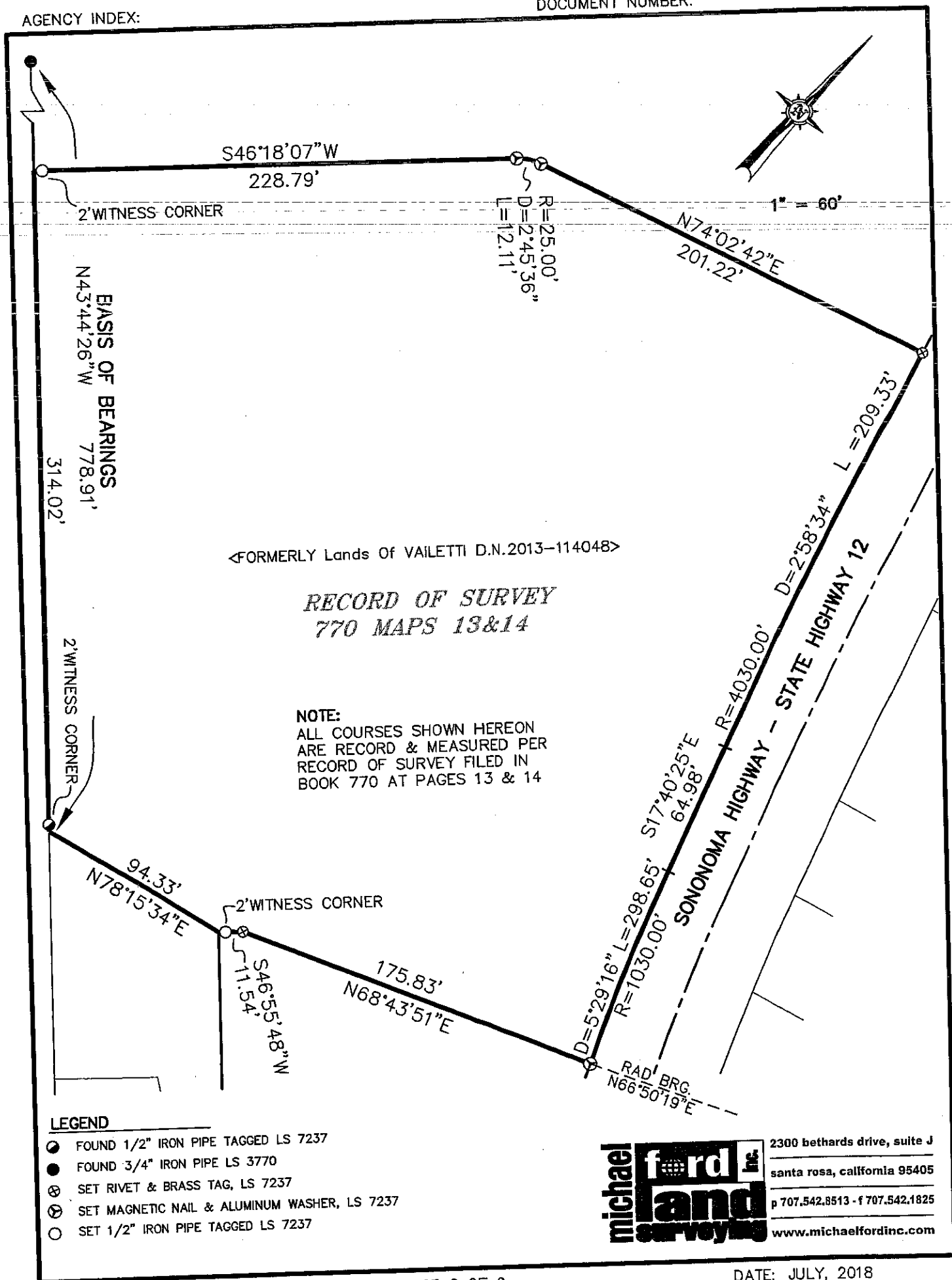
## County Surveyor's Comment

APN 056-201-101

SUR18-0155

Sonoma Highway - State Highway 12

SEC 35, T6N, R6W, C35



# CORNER RECORD

Agency Index

Document Number

CR1509

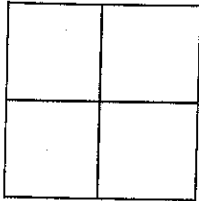
City of

County of

SONOMA

, California

Brief Legal Description LOT 30, COFFEE PARK UNIT 5, 400 MAPS 40, SONOMA COUNTY RECORDS



## CORNER TYPE

Government Corner ☐ Control  
Meander ☒ Property  
Rancho ☐ Other

N. \_\_\_\_\_

## COORDINATES (Optional)

E. \_\_\_\_\_

☐ Elevation☐ UnitsMetric ☐U.S. Survey Foot ☐☐ Horizontal Datum

Zone \_\_\_\_\_

Epoch Date \_\_\_\_\_

Vertical Datum \_\_\_\_\_

Date of Survey 6/29/2018

☐ Complies with Public Resources Code §§8801-8819  
☐ Complies with Public Resources Code §§8890-8902

PLS Act Ref: ☒ 8765(d)☐ 8771☐ 8773☐ Other: \_\_\_\_\_Corner/  
Monument:☐ Left as found☐ Established☐ Rebuilt☐ Pre-Construction☐ Found and tagged☐ Reestablished☐ Referenced☐ Post-Construction

Narrative of corner identified and monument as found, set, reset, replaced, or removed:  
☐ See sheet #2 for description(s):

HELD RECORD BEARING AND DISTANCES FROM FOUND MONUMENTS SHOWN ON THE MAP OF COFFEE PARK UNIT 5, BOOK 400 OF MAPS AT PAGE 40, SONOMA COUNTY RECORDS TO ESTABLISH THE LOCATION OF LOT 30. SET 1/2" BRASS TAGS STAMPED "PLS 8614" ON THE TOP OF CURB 4.75 FEET FROM THE NORTH LINE ON THE EXTENSION OF THE PARCEL SIDE LINES.

## SURVEYOR'S STATEMENT

This Corner Record was prepared by me or under my direction in conformance with the Professional Land Surveyors' Act on \_\_\_\_\_

Signed

P.L.S. or R.C.E. No. 8614

## COUNTY SURVEYOR'S STATEMENT

This Corner Record was received JULY 26, 2018

and examined and filed AUGUST 8, 2018

Signed

P.L.S. or R.C.E. No. 7886

Title COUNTY SURVEYOR, SONOMA COUNTY



County Surveyor's Comment APN: 034-431-030

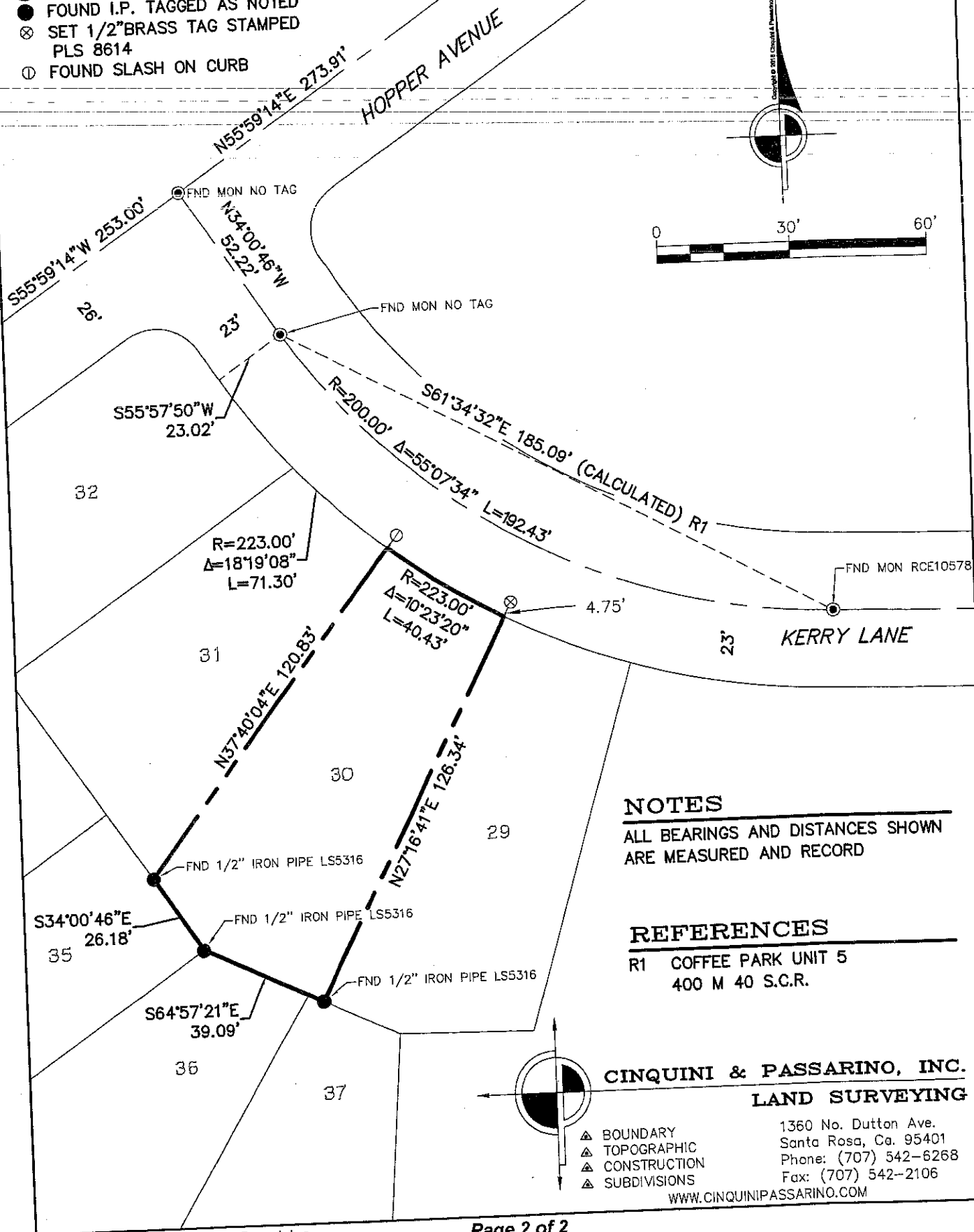
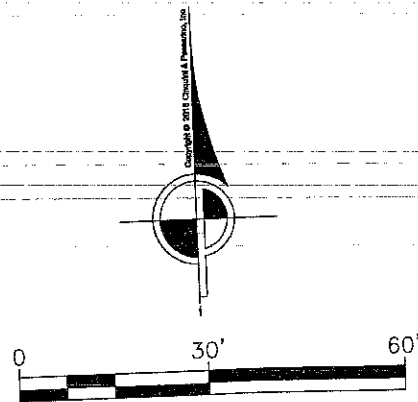
SUR18-0152

Kerry Lane

City of Santa Rosa

# LEGEND

- SET 1/2" IRON PIPE TAGGED PLS 8614
- FOUND CITY MONUMENT
- FOUND I.P. TAGGED AS NOTED
- ⊗ SET 1/2" BRASS TAG STAMPED PLS 8614
- ① FOUND SLASH ON CURB



## NOTES

ALL BEARINGS AND DISTANCES SHOWN ARE MEASURED AND RECORD

## REFERENCES

R1 COFFEE PARK UNIT 5  
400 M 40 S.C.R.

**CINQUINI & PASSARINO, INC.**  
**LAND SURVEYING**

- ▲ BOUNDARY
- ▲ TOPOGRAPHIC
- ▲ CONSTRUCTION
- ▲ SUBDIVISIONS

1360 No. Dutton Ave.  
Santa Rosa, Ca. 95401  
Phone: (707) 542-6268  
Fax: (707) 542-2106

WWW.CINQUINIPASSARINO.COM