

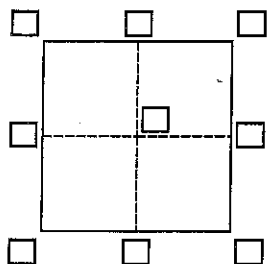
# CORNER RECORD

Agency Index

CR1510

Document Number

City of SANTA ROSA County of SONOMA, California  
Brief Legal Description LOT 10, UNIT 1 HILLVIEW MANOR SUBDIVISION, 235 MAPS 9-10, S.C.R.,  
APN 148-180-010

**CORNER TYPE**

Government Corner ☐ Control  
Meander ☐ Property  
Rancho ☐ Other

Date of Survey JULY 18, 2018**COORDINATES (Optional)**

N. \_\_\_\_\_ E. \_\_\_\_\_

Elevation

Units

Metric ☐U.S. Survey Foot ☒

Horizontal Datum

Zone

Epoch Date

Vertical Datum

☐ Complies with Public Resources Code §§8801-8819☐ Complies with Public Resources Code §§8890-8902

PLS Act Ref.:

☒ 8765(d)☐ 8771☐ 8773☐ Other:Corner/  
Monument:☐ Left as found☐ Established☐ Rebuilt☐ Pre-Construction☐ Found and tagged☒ Reestablished☐ Referenced☐ Post-Construction

Narrative of corner identified and monument as found, set, reset, replaced, or removed:

☒ See sheet #2 for description(s):

Found street monuments on centerline of Starview Drive to be in good condition and record position as shown on map of "Unit 1 Hillview Manor Subdivision", 235 maps 9-10, Sonoma County Records, and used to reestablish the boundary of Lot 10.

**SURVEYOR'S STATEMENT**

This Corner Record was prepared by me or under my direction in conformance with

the Professional Land Surveyors' Act on July 23, 2018

Signed

P.L.S. or P.C.E. No.

7237**COUNTY SURVEYOR'S STATEMENT**

This Corner Record was received

JULY 26, 2018

and examined and filed

AUGUST 8, 2018

Signed

P.L.S. or P.C.E. No.

7886

Title

COUNTY SURVEYOR,**County Surveyor's Comment**APN 148-180-010SUR18-0154Starview DrCity of Santa Rosa

VIEW COURT

STARVIEW DRIVE 46' R/W

23.00'

BASIS OF BEARING

S89° 37' 08"E

329.00'

47.02' (C)

62.00' (C)

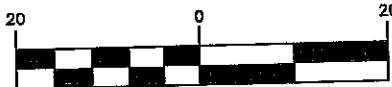
219.98' (C)

23.00'

23.00'

S89° 37' 08"E

62.00'



( IN FEET )

1 inch = 20 ft.

LOT 9

UNIT 1  
HILLVIEW MANOR  
SUBDIVISION  
235 MAPS 9-10

APN 148-180-010

LOT 10

LOT 11

S00° 22' 52"W

100.00'

100.00'

S00° 22' 52"W

2.0' WITNESS

2.0' WITNESS

N89° 37' 08"W

62.00'

**NOTES:**

ALL DISTANCES SHOWN ARE IN  
FEET AND DECIMALS THEREOF.  
ALL SURVEY TIES ARE  
PERPENDICULAR UNLESS  
OTHERWISE NOTED.

**BOUNDARY NOTE:**

ALL COURSES SHOWN HEREON  
ARE RECORD AND MEASURED  
PER MAP OF UNIT 1 HILLVIEW  
MANOR SUBDIVISION, SONOMA  
COUNTY RECORDS.

**LEGEND**

- CITY OF SANTA ROSA STREET  
CENTERLINE MONUMENT 2" BRASS  
DISK W/ PUNCH
- SET 1/2" IRON PIPE LS 7237
- (C) CALCULATED

**BASIS OF BEARINGS**

S89°37'08"E BETWEEN FOUND STREET CENTERLINE  
MONUMENTS PER MAP OF UNIT 1 HILLVIEW MANOR  
SUBDIVISION, FILED IN BOOK 235 OF MAPS PAGES  
9-10, SONOMA COUNTY RECORDS.

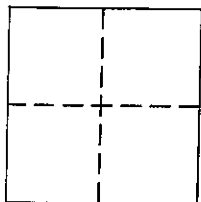
**michael ford**  
**land**  
**surveying**

2300 bethards drive, suite J  
santa rosa, california 95405  
p 707.542.8513 - f 707.542.1825  
www.michaelfordinc.com

# CORNER RECORD

Agency Index

Document Number

CR 1511City of SANTA ROSACounty of SONOMA, CaliforniaBrief Legal Description LOT 13, COFFEE PARK UNIT 2, 390 MAPS 4-6, SONOMA COUNTY RECORDS**CORNER TYPE**

Government Corner ☐ Control  
Meander ☐ Property  
Rancho ☐ Other

**COORDINATES (Optional)**

N. \_\_\_\_\_ E. \_\_\_\_\_

☐ Elevation \_\_\_\_\_☒ Units Metric ☐ U.S. Survey Foot ☐☐ Horizontal Datum \_\_\_\_\_

Zone \_\_\_\_\_ Epoch Date \_\_\_\_\_

Vertical Datum \_\_\_\_\_

Date of Survey 7/9/2018☐ Complies with Public Resources Code §§8801-8819☐ Complies with Public Resources Code §§8890-8902PLS Act Ref: ☒ 8765(d)☐ 8771☐ 8773☐ Other: \_\_\_\_\_Corner/Monument: ☐ Left as found☐ Established☐ Rebuilt☐ Pre-Construction☐ Found and tagged☐ Reestablished☐ Referenced☐ Post-Construction

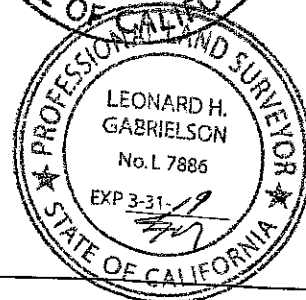
Narrative of corner identified and monument as found, set, reset, replaced, or removed:

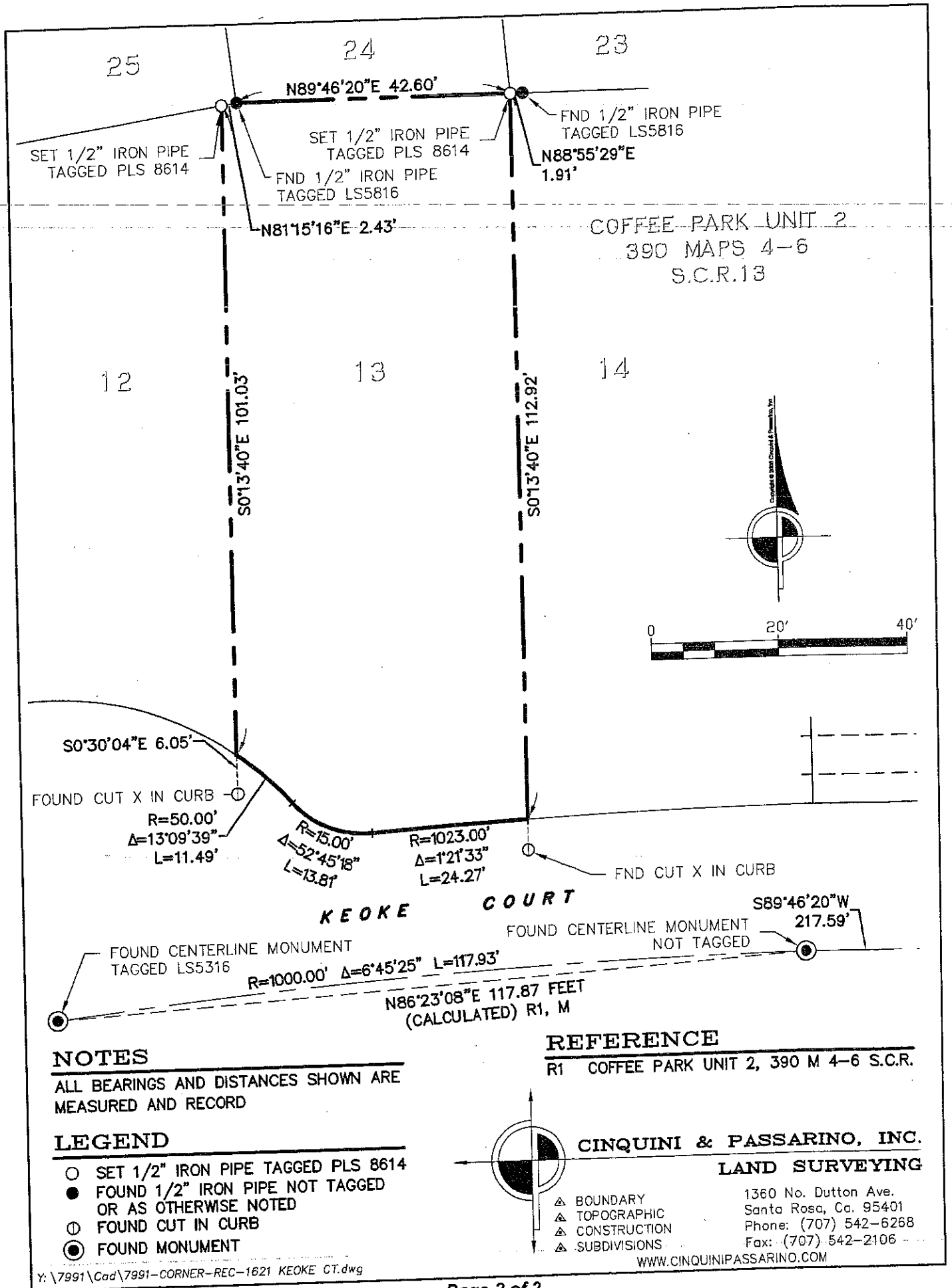
☐ See sheet #2 for description(s):

HELD RECORD BEARING AND DISTANCES FROM FOUND MONUMENTS SHOWN ON THE MAP OF COFFEE PARK UNIT 2, BOOK 390 OF MAPS AT PAGE 4 THROUGH 6, SONOMA COUNTY RECORDS TO ESTABLISH THE LOCATION OF LOT 13. SET 1/2" IRON PIPES TAGGED "PLS 8614" AT THE NORTHEASTERLY CORNER AND AT THE NORTHWESTERLY CORNER OF SAID LOT.

**SURVEYOR'S STATEMENT**

This Corner Record was prepared by me or under my direction in conformance with the Professional Land Surveyors' Act on 7/9/2018

Signed [Signature] P.L.S. or R.C.E. No. 8614**COUNTY SURVEYOR'S STATEMENT**This Corner Record was received JULY 26, 2018and examined and filed AUGUST 8, 2018Signed [Signature] P.L.S. or R.C.E. No. 7886Title COUNTY SURVEYOR, SONOMA COUNTYCounty Surveyor's Comment APN: 034-410-013SUR 18-0153Keoke CtCity of Santa Rosa



# CORNER RECORD

Agency Index

Document Number

CR1512

City of SANTA ROSA

County of

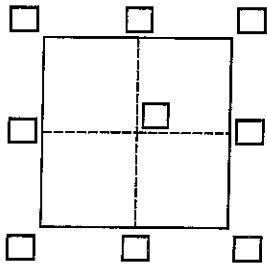
SONOMA

, California

Brief Legal Description

LOT 48, UNIT 2 HILLVIEW MANOR SUBDIVISION, 242 MAPS 30-31, S.C.R.,

APN 148-010-057

**CORNER TYPE**Government Corner ☐Control ☐Meander ☐Property ☒Rancho ☐Other ☐

Date of Survey July 10, 2018

**COORDINATES (Optional)**

N. \_\_\_\_\_

E. \_\_\_\_\_

Elevation \_\_\_\_\_

Units ☒Metric ☐U.S. Survey Foot ☒

Horizontal Datum \_\_\_\_\_

Zone \_\_\_\_\_

Epoch Date \_\_\_\_\_

Vertical Datum \_\_\_\_\_

☐ Complies with Public Resources Code §§8801-8819☐ Complies with Public Resources Code §§8890-8902

PLS Act Ref.:

☒ 8765(d)☐ 8771☐ 8773☐ Other:Corner/  
Monument:☐ Left as found☐ Established☐ Rebuilt☐ Pre-Construction☐ Found and tagged☒ Reestablished☐ Referenced☐ Post-Construction

Narrative of corner identified and monument as found, set, reset, replaced, or removed:

☒ See sheet #2 for description(s):

Found street monuments on centerline of Starview Court to be in good condition and record position as shown on map of "Unit 2 Hillview Manor Subdivision", 242 MAPS 30-31, Sonoma County Records and used to reestablish the boundary of Lot 48.

**SURVEYOR'S STATEMENT**

This Corner Record was prepared by me or under my direction in conformance with

the Professional Land Surveyors' Act on July 16, 2018

Signed

P.L.S. or R.C.E. No.

7237

**COUNTY SURVEYOR'S STATEMENT**

This Corner Record was received

JULY 19, 2018

and examined and filed

AUGUST 8, 2018

Signed

P.L.S. or R.C.E. No.

7886

Title

COUNTY SURVEYOR, SONOMA COUNTY

County Surveyor's Comment

SUR18-0142

APN 148-010-057

Starview Ct

City of Santa Rosa



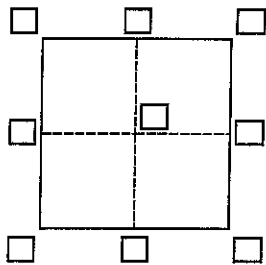


# CORNER RECORD

Agency Index

CR1513

Document Number

City of SANTA ROSA County of SONOMA, CaliforniaBrief Legal Description LOT 6, HIDDEN VALLEY ESTATES NO. 4, 172 MAPS 3-6, S.C.R.,  
APN 173-200-006**CORNER TYPE**

Government Corner ☐ Control ☐  
Meander ☐ Property ☒  
Rancho ☐ Other ☐

Date of Survey \_\_\_\_\_

**COORDINATES (Optional)**

N. \_\_\_\_\_ E. \_\_\_\_\_

Elevation \_\_\_\_\_

Units ☒ Metric ☐ U.S. Survey Foot ☒

Horizontal Datum \_\_\_\_\_

Zone \_\_\_\_\_ Epoch Date \_\_\_\_\_

Vertical Datum \_\_\_\_\_

☐ Complies with Public Resources Code §§8801-8819☐ Complies with Public Resources Code §§8890-8902

PLS Act Ref.:

☒ 8765(d)☐ 8771☐ 8773☐ Other:Corner/  
Monument:☐ Left as found☐ Established☐ Rebuilt☐ Pre-Construction☐ Found and tagged☒ Reestablished☐ Referenced☐ Post-Construction

Narrative of corner identified and monument as found, set, reset, replaced, or removed:

☒ See sheet #2 for description(s):

Found street monuments on centerline of Brookdale Drive to be in good condition and record position as shown on map of "Hidden Valley Estates Subdivision No. 4", 172 MAPS 3-6, Sonoma County Records and used to reestablish the boundary of Lot 6.

**SURVEYOR'S STATEMENT**

This Corner Record was prepared by me or under my direction in conformance with

the Professional Land Surveyors' Act on July 13, 2018

Signed

Michael E. Ford

P.L.S. or R.C.E. No.

7237**COUNTY SURVEYOR'S STATEMENT**

This Corner Record was received

JULY 19, 2018

and examined and filed

AUGUST 8, 2018

Signed

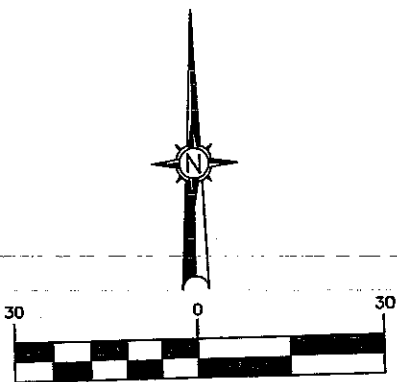
Leonard H. Gabrielson

P.L.S. or R.C.E. No.

7886

Title

COUNTY SURVEYOR, SONOMA COUNTY**County Surveyor's Comment**SUR 18-0141APN 173-200-006Brookdale DrCity of Santa Rosa



# **BASIS OF BEARINGS**

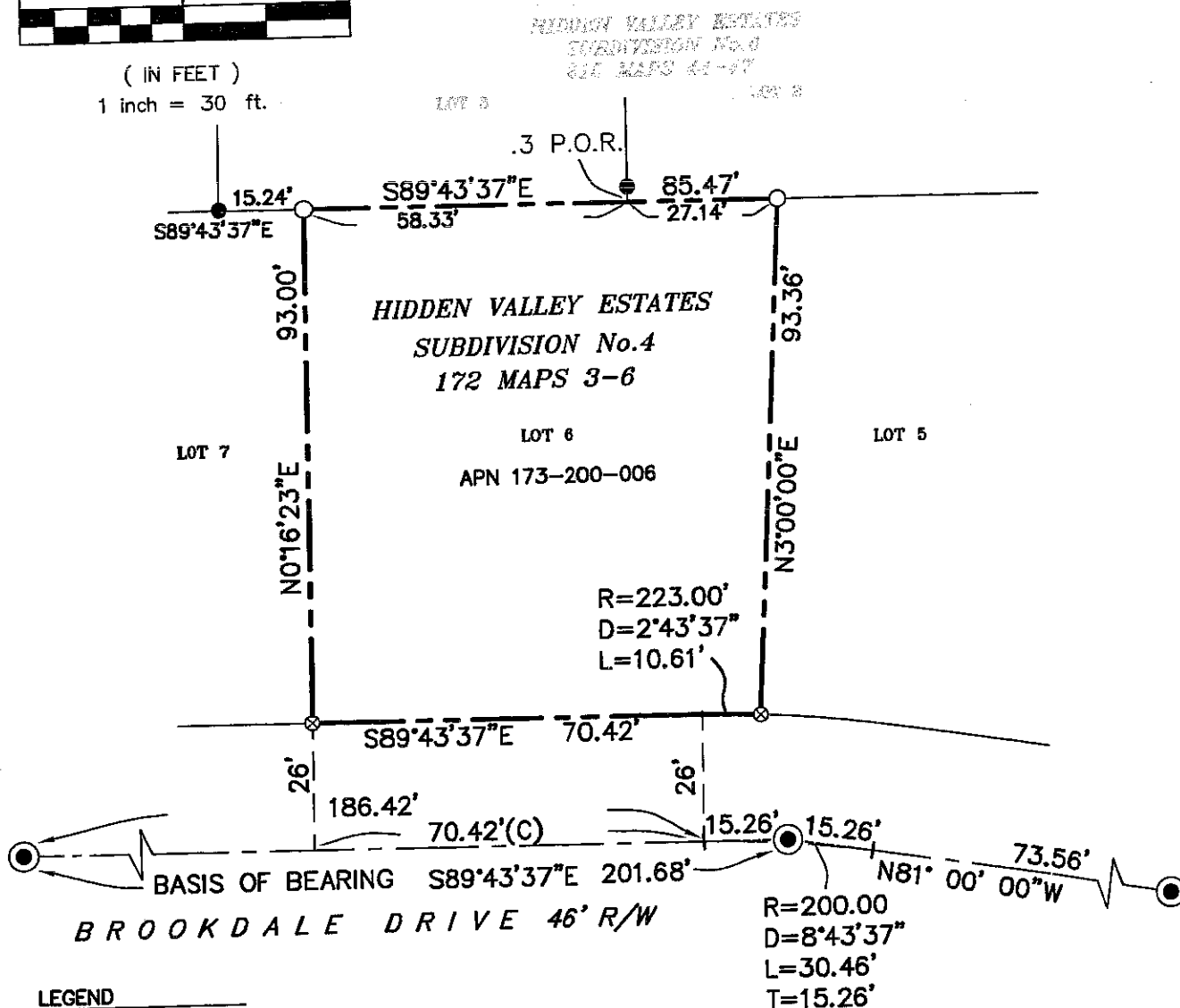
S89°43'37"E BETWEEN FOUND STREET CENTERLINE MONUMENTS PER MAP OF HIDDEN VALLEY ESTATES SUBDIVISION NO. 4, FILED IN BOOK 172 OF MAPS PAGES 3-6, SONOMA COUNTY RECORDS.

## **NOTES:**

ALL DISTANCES SHOWN ARE IN FEET AND DECIMALS THEREOF.  
ALL SURVEY TIES ARE PERPENDICULAR UNLESS OTHERWISE NOTED.

## **BOUNDARY NOTE:**

ALL COURSES SHOWN HEREON ARE RECORD AND MEASURED PER MAP OF HIDDEN VALLEY ESTATES SUBDIVISION NO. 4, SONOMA COUNTY RECORDS.



## **LEGEND**

- CITY OF SANTA ROSA STREET CENTERLINE MONUMENT 2' BRASS DISC WITH PUNCH
- FOUND 1/2" IRON PIPE, NO TAG
- SET 1/2" IRON PIPE LS 7237
- ⊗ SET RIVET & BRASS TAG LS 7237, IN SIDEWALK
- P.O.R. POINT OF ROTATION
- (C) CALCULATED

**michael ford inc.**  
**land surveying**

2300 bethards drive, suite J  
santa rosa, california 95405  
p 707.542.8513 - f 707.542.1825  
www.michaelfordinc.com



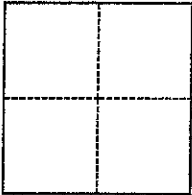
# CORNER RECORD

Agency Index

Document Number

CR 1514

City of Santa Rosa County of Sonoma, California  
Brief Legal Description Lot 20 of Hidden Valley Estates Subdivision No. 4, 172 of Maps, pages 3-6

**CORNER TYPE****COORDINATES (Optional)**

- ☐ Government Corner ☐ Control  
☐ Meander ☒ Property  
☐ Rancho ☐ Other

Date of Survey May 8, 2018

N. \_\_\_\_\_ E. \_\_\_\_\_

Elevation \_\_\_\_\_

Units

☐ Metric☐ U.S. Survey Foot

Horizontal Datum \_\_\_\_\_

Zone \_\_\_\_\_

Epoch Date \_\_\_\_\_

Vertical Datum \_\_\_\_\_

☐ Complies with Public Resources Code §§8801-8819☐ Complies with Public Resources Code §§8890-8902

PLS Act Ref.:

☒ 8765(d)☐ 8771☐ 8773☐ Other:Corner/  
Monument:☐ Left as found☐ Established☐ Rebuilt☐ Pre-Construction☐ Found and tagged☒ Reestablished☐ Referenced☐ Post-Construction

Narrative of corner identified and monument as found, set, reset, replaced, or removed:

☐ See sheet #2 for description(s):

APN: 173-200-020

Reestablished the corners along the northerly and easterly lines of Lot 20 as shown on Hidden Valley Estates Subdivision No. 4, filed in Book 172 of Maps, Pages 3-6, Sonoma county records from field ties to existing centerline monuments and holding record data as shown on said map.

**SURVEYOR'S STATEMENT**

This Corner Record was prepared by me or under my direction in conformance with

the Professional Land Surveyors' Act on May 8, 2018

Signed

P.L.S. or R.C.E. No.

L.S. 7251

**COUNTY SURVEYOR'S STATEMENT**

This Corner Record was received

JULY 19, 2018

and examined and filed

AUGUST 8, 2018

Signed

P.L.S. or R.C.E. No.

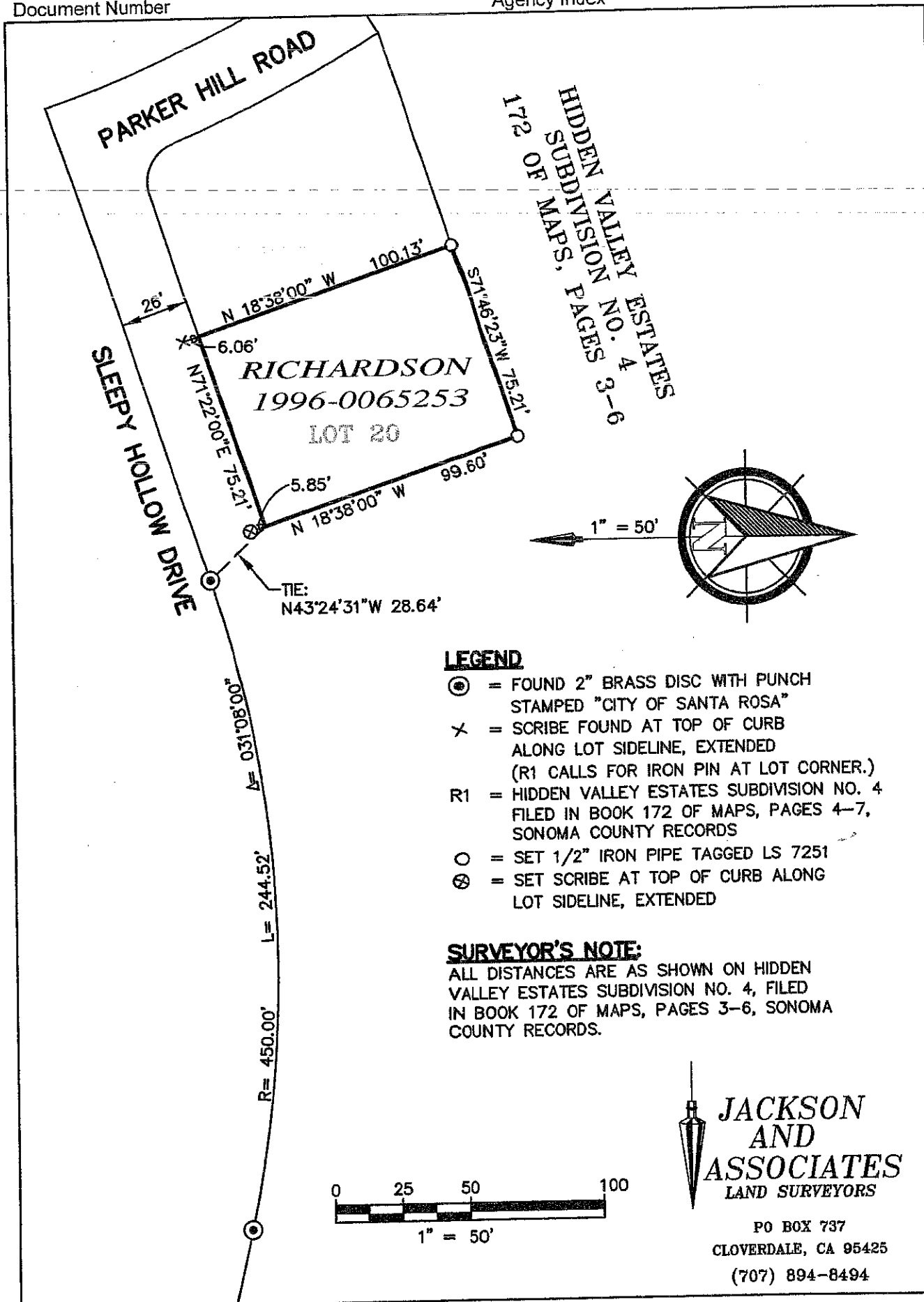
7886

Title

COUNTY SURVEYOR - SONOMA COUNTY**County Surveyor's Comment**

SUR18-0143  
APN 173-200-020  
Sleepy Hollow Dr  
City of Santa Rosa





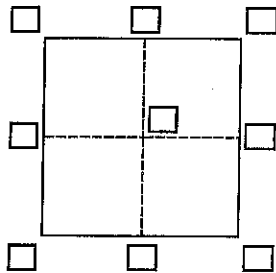
# CORNER RECORD

Agency Index

Document Number

CR 1515

City of SANTA ROSA County of SONOMA, California  
Brief Legal Description LOT 29, COFFEY PARK UNIT 3 SUBDIVISION, 396 MAPS 5-7, S.C.R.,  
APN 034-423-028



## CORNER TYPE

Government Corner ☐ Control ☐  
Meander ☐ Property ☒  
Rancho ☐ Other ☐

Date of Survey JULY 24, 2018

## COORDINATES (Optional)

N.                      E.                     Elevation                     Units ☒ Metric ☐ U.S. Survey Foot ☒Horizontal Datum                     Zone                      Epoch Date                     Vertical Datum                     ☐ Complies with Public Resources Code §§8801-8819☐ Complies with Public Resources Code §§8890-8902

PLS Act Ref.:

☒ 8765(d)☐ 8771☐ 8773☐ Other:Corner/  
Monument:☐ Left as found☐ Established☐ Rebuilt☐ Pre-Construction☐ Found and tagged☒ Reestablished☐ Referenced☐ Post-Construction

Narrative of corner identified and monument as found, set, reset, replaced, or removed:

☒ See sheet #2 for description(s):

Found street monuments on centerline of Astaire Ct. to be in good condition and record position as shown on map of "Coffey Park Unit 3 Subdivision", 396 maps 5-7, Sonoma County Records, and used to reestablish the boundary of Lot 29.

## SURVEYOR'S STATEMENT

This Corner Record was prepared by me or under my direction in conformance with

the Professional Land Surveyors' Act on July 25, 2018

Signed

P.L.S. or R.C.E. No.

7237

## COUNTY SURVEYOR'S STATEMENT

This Corner Record was received

JULY 30, 2018

and examined and filed

AUGUST 8, 2018

Signed

P.L.S. or R.C.E. No.

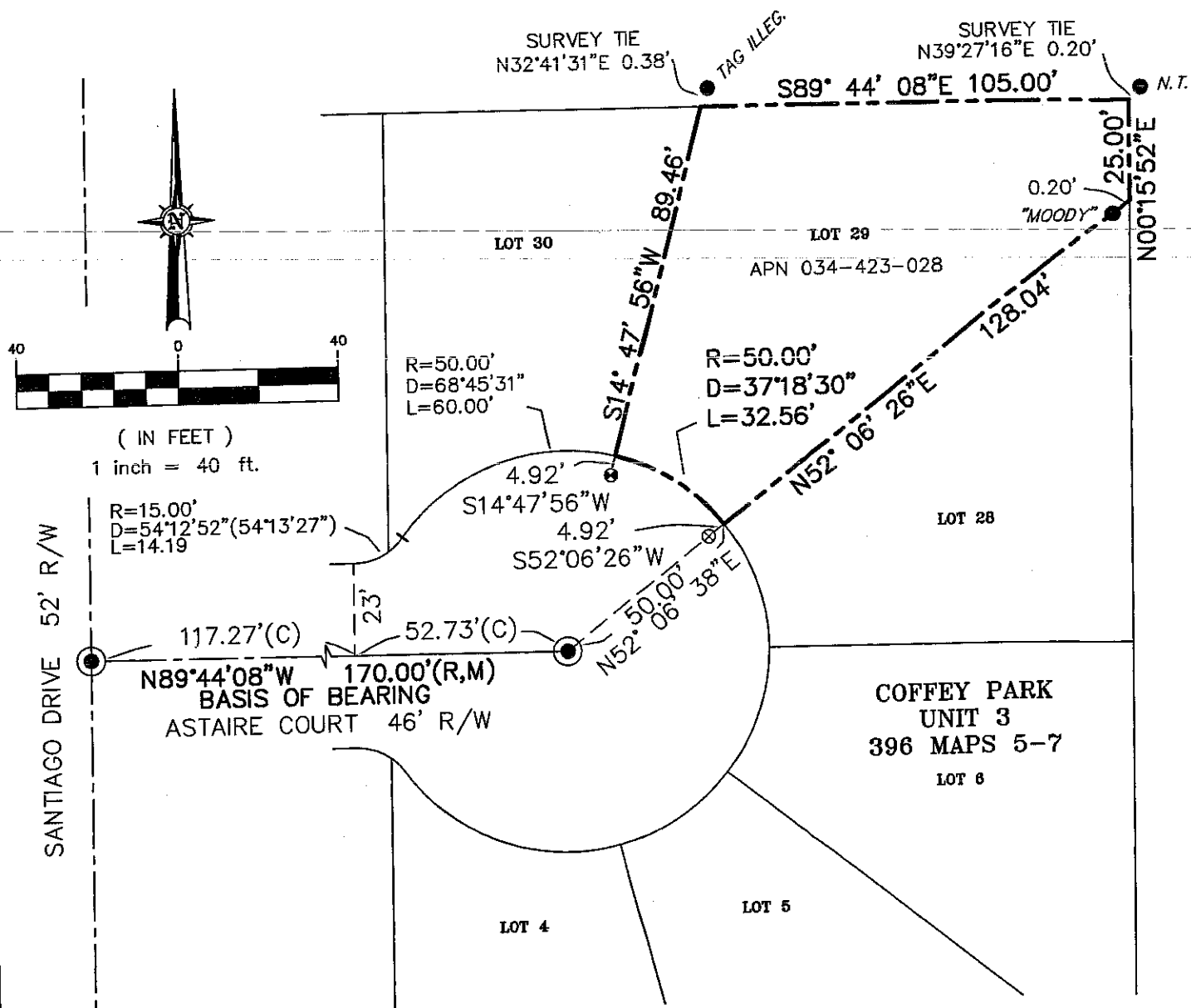
7886

Title

COUNTY SURVEYOR, SONOMA COUNTY

County Surveyor's Comment

SUR 18-0162034-423-028Astaire CtCity of Santa Rosa



#### LEGEND

- CITY OF SANTA ROSA STREET CENTERLINE MONUMENT 2" BRASS DISK W/ PUNCH
- FOUND 1/2" IRON PIPE AS NOTED
- ⊗ SET RIVET/BRASS TAG ON CURB, LS 7237
- ⊙ FOUND BRASS TAG ON CURB, ILLEGIBLE

N.T. NO TAG

ILLEG ILLEGIBLE

(C) CALCULATED

(R) RECORD

(M) MEASURED

#### BOUNDARY NOTE:

ALL COURSES SHOWN HEREON ARE RECORD AND MEASURED PER MAP OF COFFEY PARK UNIT 3, 396 MAPS 5-7, SONOMA COUNTY RECORDS, UNLESS OTHERWISE NOTED.

#### BASIS OF BEARINGS

N89°44'08"W BETWEEN FOUND STREET CENTERLINE MONUMENTS PER MAP OF COFFEY PARK UNIT 3, FILED IN BOOK 396 OF MAPS PAGES 5-7, SONOMA COUNTY RECORDS.

#### NOTES:

ALL DISTANCES SHOWN ARE IN FEET AND DECIMALS THEREOF.

ALL SURVEY TIES ARE PERPENDICULAR UNLESS OTHERWISE NOTED.

**michael ford inc.**  
**land surveying**

2300 bethards drive, suite J

santa rosa, california 95405

p 707.542.8513 - f 707.542.1825

www.michaelfordinc.com

# CORNER RECORD

Agency Index

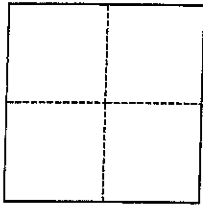
Document Number

CR1516

City of Santa Rosa County of Sonoma, CaliforniaBrief Legal Description Lot 16 of Map of Coffey Park Unit No. 4, 404 MAPS 30-32, S.C.R.

## CORNER TYPE

## COORDINATES (Optional)



- ☐ Government Corner ☐ Control  
☐ Meander ☒ Property  
☐ Rancho ☐ Other

Date of Survey July 23, 2018

N. \_\_\_\_\_ E. \_\_\_\_\_

Elevation \_\_\_\_\_

Units ☐ Metric ☐ U.S. Survey FootHorizontal Datum RECORD MAP BEARING

Zone \_\_\_\_\_ Epoch Date \_\_\_\_\_

Vertical Datum \_\_\_\_\_

☐ Complies with Public Resources Code §§8801-8819☐ Complies with Public Resources Code §§8890-8902PLS Act Ref.: ☒ 8765(d) ☐ 8771 ☐ 8773 ☐ Other:

Corner/  
Monument: ☐ Left as found ☐ Established ☐ Rebuilt ☐ Pre-Construction  
☐ Found and tagged ☒ Reestablished ☐ Referenced ☐ Post-Construction

Narrative of corner identified and monument as found, set, reset, replaced, or removed:

☐ See sheet #2 for description(s):

Found record well monuments as shown on the map of "Map of Coffey Park Unit No. 4", filed in Book 404 of Maps, pages 30-32, Sonoma County Records. I used existing well monuments to set monuments in record locations as shown on said map. The found monuments were in good condition and matched the character of the monuments on the map. Set monuments are 1/2" rebar and cap stamped "PLS 5520".

## SURVEYOR'S STATEMENT

This Corner Record was prepared by me or under my direction in conformance with

the Professional Land Surveyors' Act on July 31, 2018Signed [Signature] P.L.S. or R.C.E. No. P.L.S. 5520

## COUNTY SURVEYOR'S STATEMENT

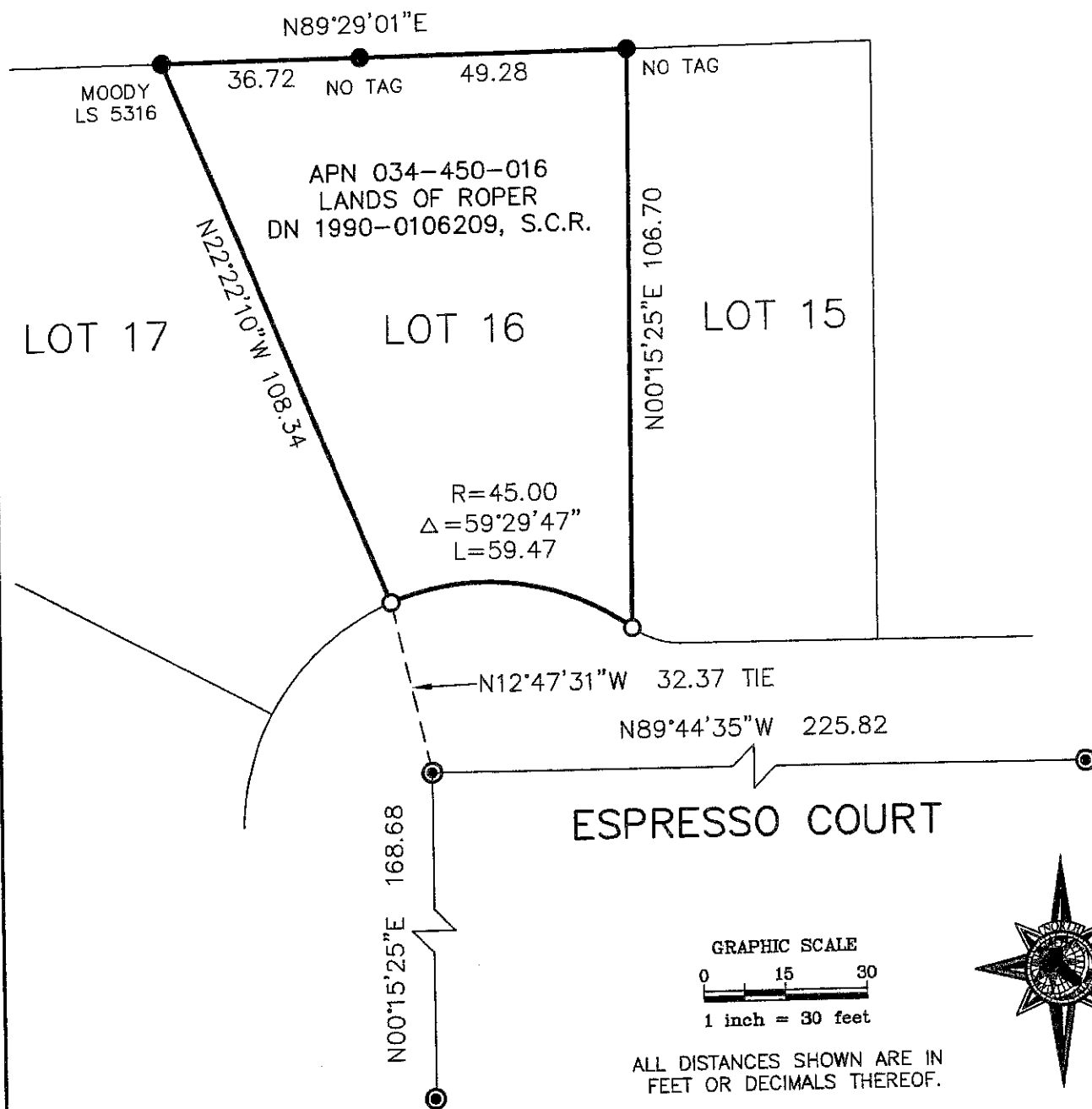
This Corner Record was received AUGUST 10, 2018and examined and filed AUGUST 13, 2018Signed [Signature] P.L.S. or R.C.E. No. 7886Title COUNTY SURVEYOR, SONOMA COUNTY

## County Surveyor's Comment

ESPRESSO COURT  
SUR 18-0168

APN 034-450-016

City of: Santa Rosa



THIS EXHIBIT IS FOR GRAPHIC PURPOSES ONLY.

### LEGEND

- FOUND BRASS DISK IN MONUMENT WELL
- FOUND 1/2" IRON PIPE, TAGGED AS NOTED
- SET 1/2" REBAR, "PLS 5520"
- S.C.R. SONOMA COUNTY RECORDS

LACO and ASSOC.  
44B MILL STREET  
HEALDSBURG, CA 95448  
(707) 433-6792

### SURVEYOR'S NOTE

ALL INFORMATION SHOWN HEREON IS BASED ON FOUND MONUMENTS AND RECORD INFORMATION AS SHOWN ON THE MAP OF COFFEY PARK UNIT NO. 4, FILED IN BOOK 404 OF MAPS AT PAGES 30-32, SONOMA COUNTY RECORDS.

JOB NO. 9093.00 DATE: JULY, 2018

# CORNER RECORD

Agency Index

Document Number

021517

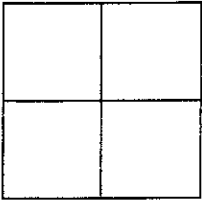
City of UNINCORPORATED AREA

County of SONOMA, California

Brief Legal Description MONUMENTATION OF LOT LINE ADJUSTMENT LLA 12-0030 SHOWN ON  
RECORD OF SURVEY, BOOK 769 OF MAPS, AT PAGE 47, SONOMA COUNTY RECORDS.

## CORNER TYPE

## COORDINATES (Optional)



Government Corner ☐ Control ☐  
Meander ☐ Property ☒  
Rancho ☐ Other ☐

N. E.

Elevation

Units Metric ☐ U.S. Survey Foot ☐

Horizontal Datum

Zone Epoch Date

Vertical Datum

☐ Complies with Public Resources Code §§8801-8819☐ Complies with Public Resources Code §§8890-8902

Date of Survey 7/27/18

PLS Act Ref: ☒ 8765(d) ☐ 8771 ☐ 8773 ☐ Other:

Corner/  
Monument: ☐ Left as found ☐ Established ☐ Rebuilt ☐ Pre-Construction  
☐ Found and tagged ☒ Reestablished ☐ Referenced ☐ Post-Construction

Narrative of corner identified and monument as found, set, reset, replaced, or removed:

☒ See sheet #2 for description(s) :

FOUND MONUMENTS AS SHOWN ON SHEET #2. REPLACED MONUMENTS AS INDICATED ON  
SHEET #2.

## SURVEYOR'S STATEMENT

This Corner Record was prepared by me or under my direction in conformance with

the Professional Land Surveyors' Act on JULY 31, 2018

Signed Jonathan R. Olin P.L.S. or R.G.E. No. 7590



## COUNTY SURVEYOR'S STATEMENT

This Corner Record was received August 13, 2018

and examined and filed AUGUST 13, 2018

Signed [Signature] P.L.S. or R.G.E. No. 7886

Title COUNTY SURVEYOR, SONOMA COUNTY

County Surveyor's Comment

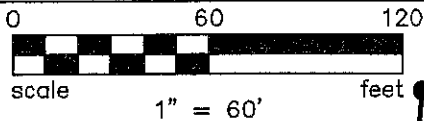
MARK WEST SPRINGS ROAD

SUR 18-0169

APN: 067-110-049

SEC 27, T8N, R8W, E21





SEIDENFELD  
APN 067-110-049  
985 MARK WEST SPRINGS

FND 3/4" IP  
NO TAG

N87°55'56"W R1&M  
40.04' R1 39.85' M

PRIVATE ROAD & PUBLIC  
UTILITY EASEMENT  
PER 459 MAPS 25-27

$\Delta=50^{\circ}03'05''$   
L=135.40  
R=155.00

MARK WEST SPRINGS RD

FND 3/4" IP  
PLASTIC CAP MELTED

**CARLILE • MACY**

CIVIL ENGINEERS • URBAN PLANNERS • LAND SURVEYORS • LANDSCAPE ARCHITECTS

15 THIRD STREET, SANTA ROSA, CA 95401  
Tel (707) 542-6451 FAX (707) 542-5212

FND 3/4" IP  
NO TAG

S4°50'30"W 114.00'  
77.28'

N20°05'40"W  
BASIS OF BEARINGS

S31°26'00"E  
105.00'

S10°37'43"E  
51.25'

S44°18'50"E 140.21'

FND 3/4" IP  
PLASTIC CAP  
MELTED

50.95'  
S66°03'57"W  
W46°25'42"E  
RADIAL

DETAIL  
NOT TO SCALE

### LEGEND

C CALCULATED  
M MEASURED  
R1 769 MAPS 47  
● FOUND 3/4" IRON PIPE PER R1  
○ SET 1/2" IRON PIPE PLS 7590

FESSENDEN  
APN 067-110-050  
987 MARK WEST SPRINGS

SEE DETAIL  
ABOVE

JOB # 2017300.A4



# CORNER RECORD

Agency Index

Document Number

County of

SONOMA

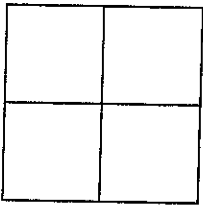
California

City of SANTA ROSA

Brief Legal Description MOST SOUTHERLY CORNER OF LOT 18 OF ANNADEL HEIGHTS SUBDIVISION NO. 4-D, FILED IN BOOK 324 OF MAPS, AT PAGES 15-17, SONOMA COUNTY RECORDS.

## CORNER TYPE

## COORDINATES (Optional)



Government Corner

☐

Control

☐

Meander

☐

Property

☒

Rancho

☐

Other

☐

N.

E.

Elevation

Units

Metric

☐

U.S. Survey Foot

☐

Horizontal Datum

Zone

Epoch Date

Vertical Datum

☐ Complies with Public Resources Code §§8801-8819☐ Complies with Public Resources Code §§8890-8902PLS Act Ref: ☒ 8765( d)☐ 8771☐ 8773☐ Other:

Corner/

☐

Left as found

☐

Established

☐

Rebuilt

☐

Pre-Construction

Monument:

☐

Found and tagged

☒

Reestablished

☐

Referenced

☐

Post-Construction

Narrative of corner identified and monument as found, set, reset, replaced, or removed:  
☒ See sheet #2 for description(s) :

FOUND MONUMENTS AS SHOWN ON SHEET #2. THE MEASURED BEARING ON THE SOUTHEASTERLY LINE OF LOT 17, (324 MAPS 15-17), MATCHED RECORD PER R1 & R3. I RE-ESTABLISHED THE MOST SOUTHERLY CORNER OF LOT 18, (324 MAPS 15-17), BY BEARING-BEARING INTERSECTION AS SHOWN ON SHEET #2.

## SURVEYOR'S STATEMENT

This Corner Record was prepared by me or under my direction in conformance with

the Professional Land Surveyors' Act on JULY 16, 2018.

Signed Jonathan R. Olin P.L.S. or R.C.E. No. 7590



## COUNTY SURVEYOR'S STATEMENT

This Corner Record was received AUGUST 13, 2018

and examined and filed AUGUST 13, 2018

Signed [Signature] P.L.S. or R.C.E. No. 7886

Title COUNTY SURVEYOR, SONOMA COUNTY

County Surveyor's Comment

ANNADEL HEIGHTS DRIVE

SUR 18-0139

AN: 049-730-018

City of: Santa Rosa

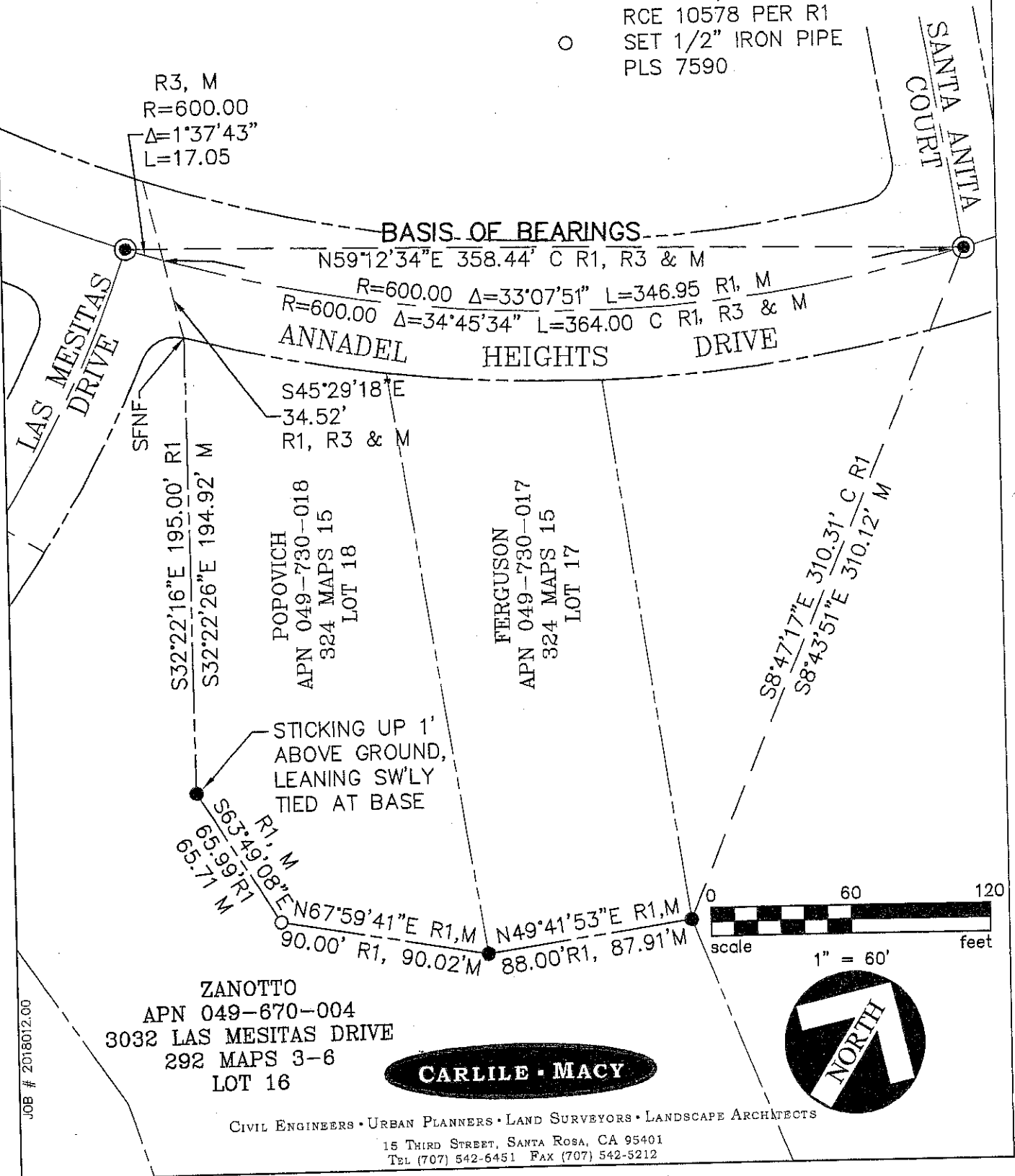


## REFERENCES

R1 324 MAPS 15-17  
 R2 292 MAPS 3-6  
 R3 285 MAPS 23-27

## LEGEND

C CALCULATED  
 M MEASURED  
 R1 REFERENCE MAP  
 SFNF SEARCHED FOR NOT FOUND  
 ● FOUND 1/2" IRON PIPE  
 RCE 10578 PER R1  
 ○ SET 1/2" IRON PIPE  
 PLS 7590



# CORNER RECORD

Agency Index

CR1519

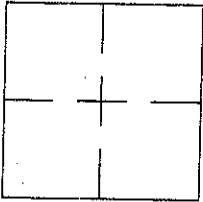
Document Number

City of CITY OF SANTA ROSA

County of SONOMA

, California

Brief Legal Description LOT 7 SHARON PARK SUBDIVISION NO. 3 BOOK 242 MAPS PAGES 43-45  
APN: 148-190-007



## CORNER TYPE

Government Corner ☐ Control ☐  
 Meander ☐ Property ☒  
 Rancho ☐ Other ☐

Date of Survey 02-23-2018

## COORDINATES (Optional)

N.                      E.                     

Elevation                     

Units Metric ☐ U.S. Survey Foot ☐

Horizontal Datum                     

Zone                      Epoch Date                     

Vertical Datum                     

☐ Complies with Public Resources Code §§8801-8819

☐ Complies with Public Resources Code §§8890-8902

PLS Act Ref: ☐ 8765(d)

☐ 8771

☒ 8773

☐ Other:

Corner/  
Monument: ☐ Left as found

☐ Established

☐ Rebuilt

☐ Pre-Construction

☐ Found and tagged ☒ Reestablished

☐ Referenced

☐ Post-Construction

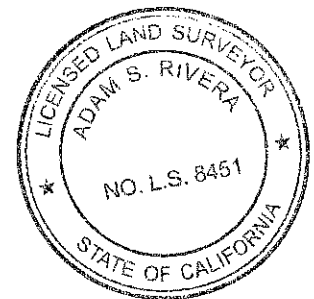
Narrative of corner identified and monument as found, set, reset, replaced, or removed:  
☐ See sheet #2 for description(s):

CENTERLINE MONUMENTS WERE FOUND IN TULIPTREE DRIVE WITH NO PUNCH. 5/8" BRASS DISCS IN CURB  
LINE WERE FOUND. IN ORDER TO RESOLVE BACK LINE MONUMENTS FROM SHARON PARK SUBDIVISION NO. 2  
BOOK 229 OF MAPS PAGES 36-38 WERE USED. AFTER EXTENSIVE RESEARCH IT WAS BELIEVED THAT BOTH  
SHARON PARK SUBDIVISION NO 3 AND NO 2 WERE CREATED WITH EACH OTHER IN MIND AND MONUMENTS  
ONLY SHOWN ON SUBDIVISION NO 1 CAN BE USED AS EVIDENCE FOR BOTH SUBDIVISIONS.

## SURVEYOR'S STATEMENT

This Corner Record was prepared by me or under my direction in conformance with  
 the Professional Land Surveyors' Act on 8/14, 2018

Signed [Signature] P.L.S. or R.C.E. No. 8451



## COUNTY SURVEYOR'S STATEMENT

This Corner Record was received AUGUST 14, 2018

and examined and filed AUGUST 16, 2018.

Signed [Signature] P.L.S. or R.C.E. No. 7886

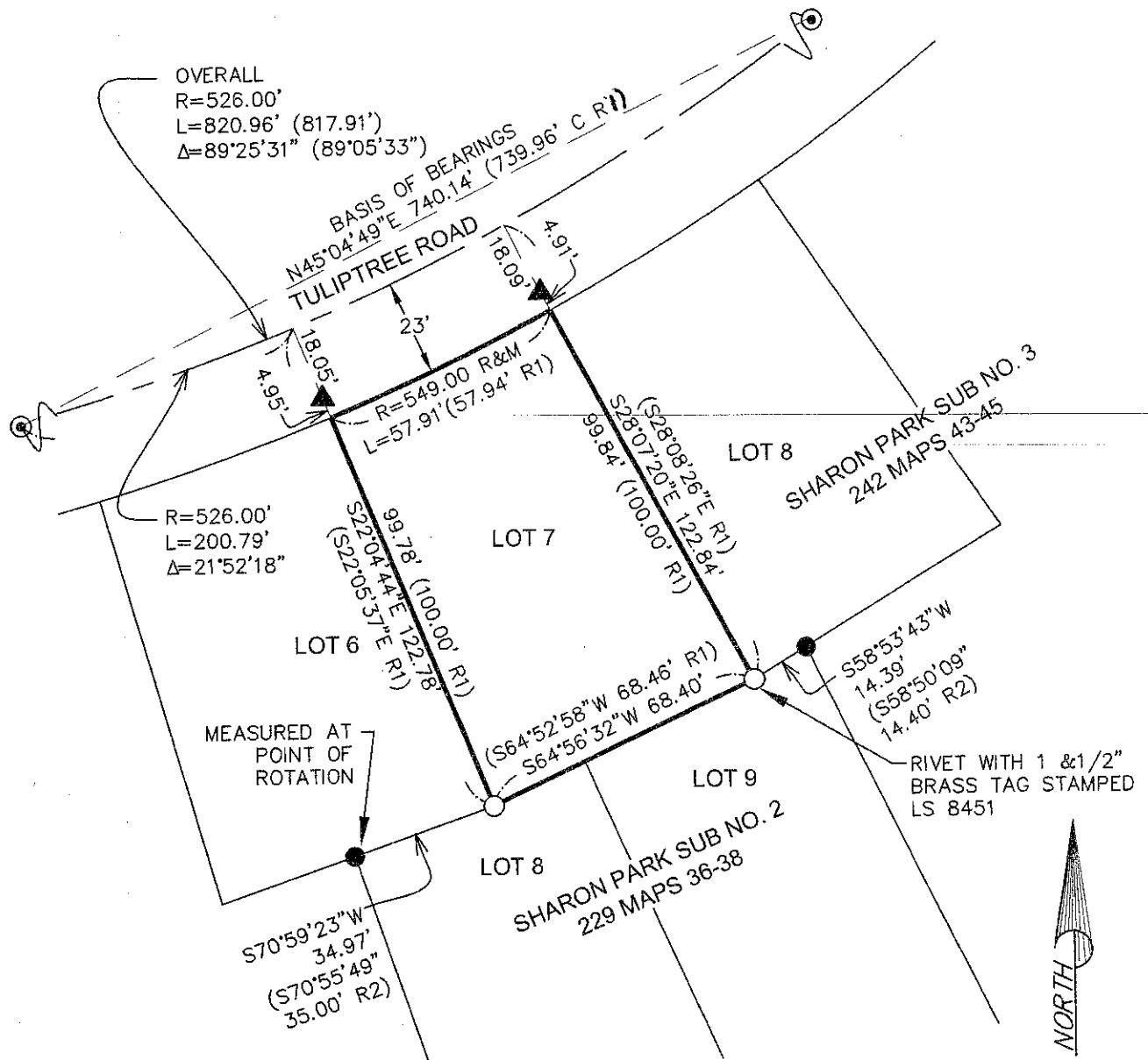
Title COUNTY SURVEYOR, SONOMA COUNTY

County Surveyor's Comment

TULIPTREE ROAD  
APN: 148-190-007  
SUR 18-0100  
CITY OF SANTA ROSA



HLS JOB # 3122



## LEGEND



BOUNDARY LINE

ADJOINING BOUNDARY LINE

SURVEY TIE

SET 1/2" IRON PIPE, TAGGED LS 8451

FOUND 1/2" IRON PIPE NO TAG, EXCEPT AS NOTED

FOUND 1 1/2" BRASS DISC IN MONUMENT WELL, NO PUNCH

FOUND 5/8" LEAD TAG IN CURB

(R1) RECORDED DATA SHARON PARK SUBDIVISION NO. 3 BOOK 242 MAPS PAGES 43-45

(R2) RECORDED DATA SHARON PARK SUBDIVISION NO. 2 BOOK 229 MAPS PAGES 36-38