

# RECORD OF SURVEY No. 4380

BEING A SURVEY OF THE SOUTH LINE OF LOT 18, BLOCK 51  
OF THE P. WELCH SUBDIVISION, IN THE CITY OF MARICOPA, COUNTY OF KERN,  
STATE OF CALIFORNIA PER MAP FILED JULY 23, 1921 IN BOOK 3, PAGE 42 OF MAPS  
ON FILE IN THE OFFICE OF THE KERN COUNTY RECORDER. ALSO BEING A PORTION  
OF THE NE/4 OF SECTION 12, T. 11 N., R. 24 W., S.B.M.

## BASIS OF BEARINGS

THE MEASURED BEARING OF N 00°29'14" E FOR THE CENTERLINE OF  
TEJON STREET WAS USED AS THE BASIS FOR THE BEARINGS SHOWN HEREON

ALL DISTANCES SHOWN HEREON ARE IN FEET AND DECIMALS THEREOF

THIS MAP IS BEING FILED PURSUANT TO SECTION 8762 (b) (5) OF THE  
PROFESSIONAL LAND SURVEYOR'S ACT TO INDICATE MONUMENTS FOUND  
AND SET PER THIS SURVEY.

NO TITLE REPORT WAS PROVIDED BY THE PROPERTY OWNER DURING THE  
THE DURATION OF THIS SURVEY. NO EASEMENTS, RECORDED OR THOSE NOT OF  
RECORD, ARE SHOWN HEREON.

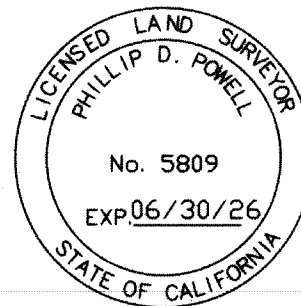
## SURVEYOR'S STATEMENT

THIS MAP CORRECTLY REPRESENTS A SURVEY MADE BY ME, OR  
UNDER MY DIRECTION IN CONFORMANCE WITH THE REQUIREMENTS OF THE  
PROFESSIONAL LAND SURVEYOR'S ACT AT THE REQUEST OF ALEXANDER FERNANDES  
AND PORTIA LEYVA IN MARCH 2025.

Phillip D. Powell

PHILLIP D. POWELL  
PLS 5809

6-09-2025

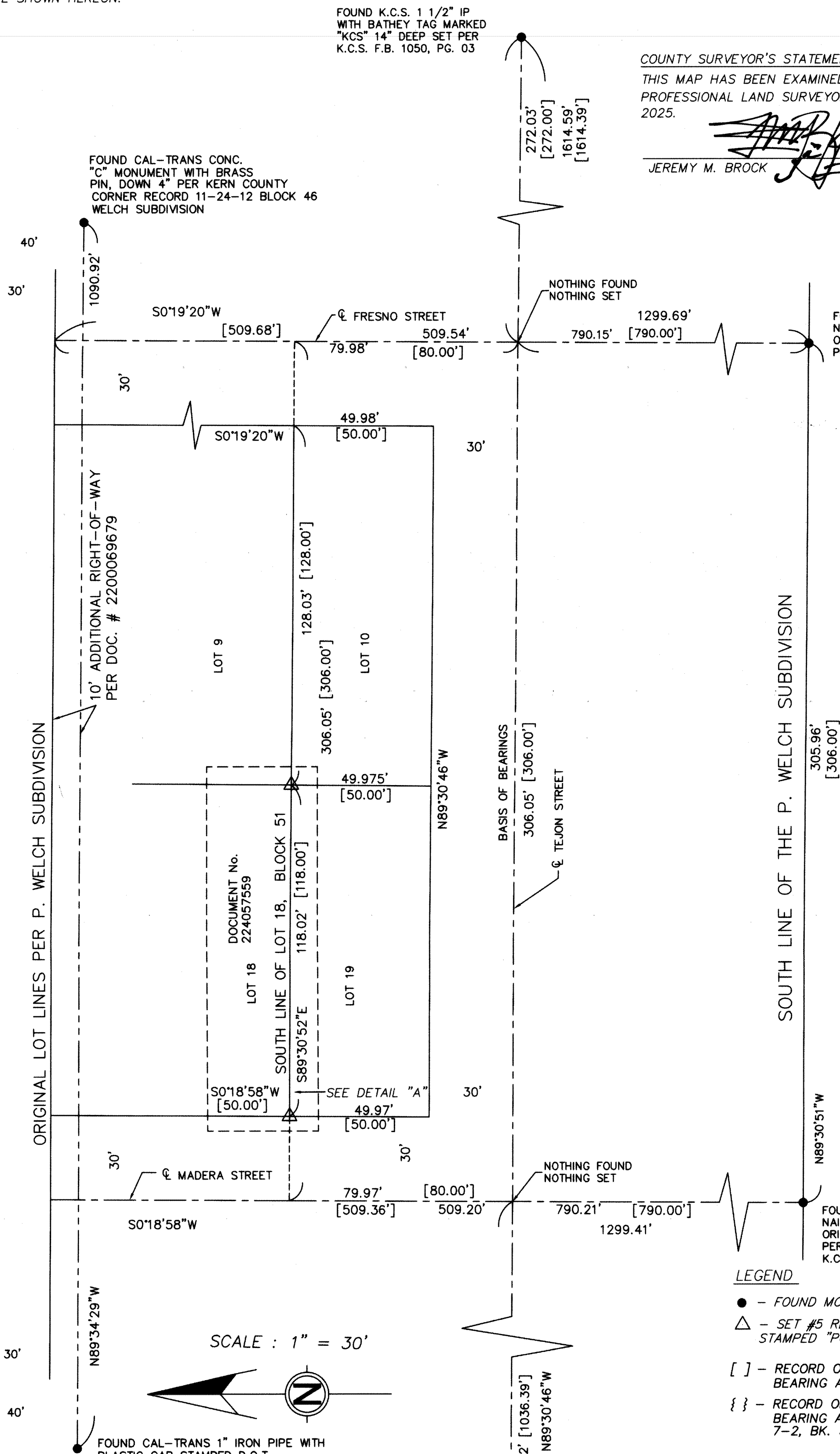
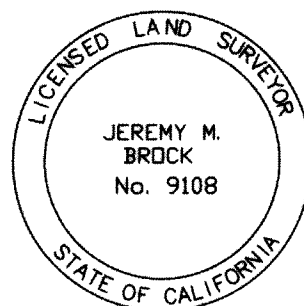


## COUNTY SURVEYOR'S STATEMENT

THIS MAP HAS BEEN EXAMINED IN ACCORDANCE WITH SECTION 8766 OF THE  
PROFESSIONAL LAND SURVEYOR'S ACT THIS 12th DAY OF JUNE,  
2025.

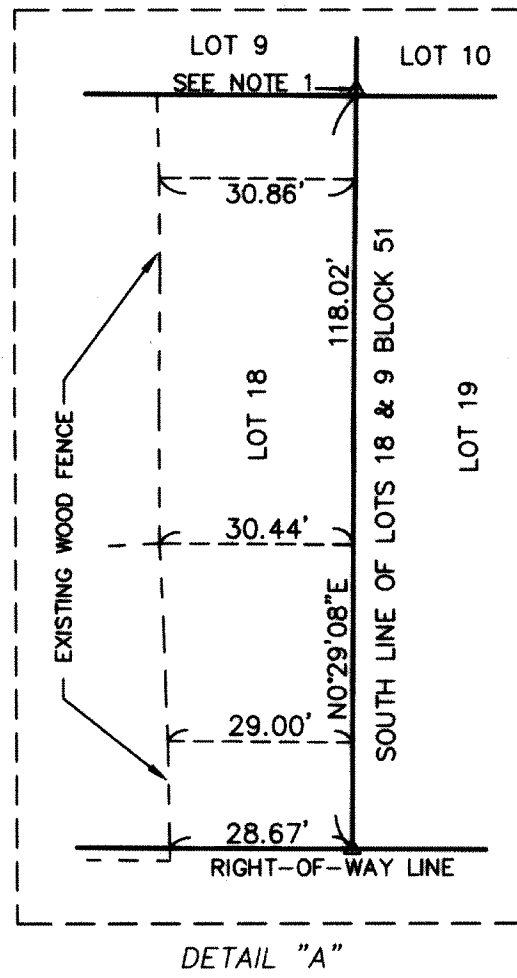
Jeremy M. Brock

COUNTY SURVEYOR



SCALE : 1" = 30'

NOTE 1  
SET REBAR AND CAP N 0°29'08"E, 1.00'  
FROM CALCULATED LOT CORNER POSITION AS  
THE CALCULATED POSITION IS UNDER A FENCE POST



## LEGEND

- - FOUND MONUMENT AS DESCRIBED HEREON
- △ - SET #5 REBAR WITH PLASTIC CAP  
STAMPED "POWELL LS 5809"
- [ ] - RECORD OR CALCULATED FROM RECORD,  
BEARING AND/OR DISTANCE PER P. WELCH SUBDIVISION
- { } - RECORD OR CALCULATED FROM RECORD,  
BEARING AND/OR DISTANCE PER CAL-TRANS HIGHWAY MAP  
7-2, BK. 5, PG. 121

## RECORDER'S STATEMENT

FILED THIS 14 DAY OF JUNE, 2025 AT 9 A .M, IN BOOK 36  
OF RECORDS OF SURVEYS AT PAGE 111 AT THE REQUEST OF PHILLIP D. POWELL

LAURA AVILA  
ASSESSOR - RECORDER

BY: Sabrina Aguilar  
DEPUTY RECORDER

SHEET ONE OF ONE

I.P. - IRON PIPE C.M. - CONCRETE MONUMENT  
K.C.S. - KERN COUNTY SURVEYOR F.B. - FIELD BOOK  
O.R. - OFFICIAL RECORDS L.H. - LAMP HOLE  
R.S. - RECORD OF SURVEY L.S. - LICENSED SURVEYOR  
R.P. - REFERENCE POINT DOC. - DOCUMENT  
R/W - RIGHT OF WAY R&M - RECORD & MEASURED  
PLS - PROFESSIONAL LICENSED SURVEYOR  
I.D. - INSIDE DIAMETER C.R. - CORNER RECORD  
N.O.R. - NOT OF RECORD

FOUND K.C.S. 1 1/2" IP  
WITH BATHEY TAG MARKED  
"KCS" 14" DEEP SET PER  
K.C.S. F.B. 1050, PG. 02

FOUND CAL-TRANS 1" IRON PIPE WITH  
PLASTIC CAP STAMPED D.O.T.  
DOWN 4" PER KERN COUNTY CORNER  
11-24-12 BLOCK 46 WELCH SUBDIVISION

FOUND CAL-TRANS CONC.  
"C" MONUMENT WITH BRASS  
PIN, DOWN 4" PER KERN COUNTY  
CORNER RECORD 11-24-12 BLOCK 46  
WELCH SUBDIVISION

FOUND K.C.S. 1 1/2" IP  
WITH BATHEY TAG MARKED  
"KCS" 14" DEEP SET PER  
K.C.S. F.B. 1050, PG. 03

FOUND 1 1/4" I.P. WITH  
NAIL DOWN 6". ACCEPT AS THE  
ORIGINAL BLOCK CORNER SET  
PER P. WELCH SUBDIVISION AND  
K.C.S.F.B. 1050, PG. 05

FOUND 1 1/4" I.P. WITH  
NAIL DOWN 4". ACCEPT AS THE  
ORIGINAL BLOCK CORNER SET  
PER P. WELCH SUBDIVISION AND  
K.C.S.F.B. 1050, PG. 04

225067931

111

225067931

111